

ARG44878 anti-NELL1 antibody

Package: 50 µg
Store at: -20°C

Summary

Product Description	Mouse Monoclonal antibody recognizes NELL1
Tested Reactivity	Hu
Tested Application	IHC-P
Host	Mouse
Clonality	Monoclonal
Isotype	IgG2a
Target Name	NELL1
Species	Human
Epitope	VLAEGQRILT KSCRECRGGV LVKITEMCPP LNCSEKDHIL PENQCCRVCR GHNFCAEGPK CGENSECKNW
Conjugation	Un-conjugated
Alternate Names	NELL1; Neural EGFL Like 1; IDH3GL; Protein Kinase C-Binding Protein NELL1; Nel-Related Protein 1; FLJ45906; NRP1; Neural Epidermal Growth Factor-Like 1; Nel (Chicken)-Like 1; NEL-Like 1 (Chicken); NEL-Like Protein 1

Application Instructions

Application table	<table><thead><tr><th>Application</th><th>Dilution</th></tr></thead><tbody><tr><td>IHC-P</td><td>1:200</td></tr></tbody></table>	Application	Dilution	IHC-P	1:200
Application	Dilution				
IHC-P	1:200				
Application Note	* The dilutions indicate recommended starting dilutions and the optimal dilutions or concentrations should be determined by the scientist.				

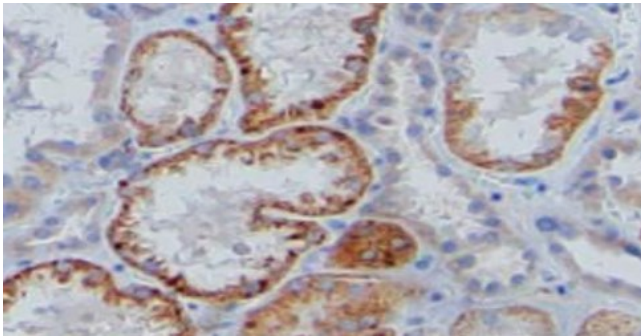
Properties

Form	Liquid
Purification	Protein A purification
Buffer	PBS with 0.09% sodium azide
Preservative	0.09% sodium azide
Storage instruction	For continuous use, store undiluted antibody at 2-8°C for up to a week. For long-term storage, aliquot and store at -20°C or below. Storage in frost free freezers is not recommended. Avoid repeated freeze/thaw cycles. Suggest spin the vial prior to opening. The antibody solution should be gently mixed before use.
Note	For laboratory research only, not for drug, diagnostic or other use.

Bioinformation

Gene Symbol	NELL1
Gene Full Name	Neural EGFL Like 1
Background	This gene encodes a cytoplasmic protein that contains epidermal growth factor (EGF)-like repeats. The encoded heterotrimeric protein may be involved in cell growth regulation and differentiation. A similar protein in rodents is involved in craniosynostosis. Alternative splicing results in multiple transcript variants. [provided by RefSeq, Dec 2013]
Function	Plays a role in the control of cell growth and differentiation. Promotes osteoblast cell differentiation and terminal mineralization. [Uniprot]
PTM	Disulfide bond, Glycoprotein. [Uniprot]
Cellular Localization	Cytoplasm, Nucleus, Secreted. [Uniprot]

Images



ARG44878 anti-NELL1 antibody IHC-P image

Immunohistochemistry: Human kidney stained with ARG44878 anti-NELL1 antibody at 5 µg/mL dilution.
