

ARG44717 anti-NUCB2 / Nucleobindin 2 antibody

Package: 50 µg
Store at: -20°C

Summary

Product Description	Mouse Monoclonal antibody recognizes NRBF2
Tested Reactivity	Hu
Tested Application	IHC-P, IP, WB
Host	Mouse
Clonality	Monoclonal
Isotype	IgG1
Target Name	NUCB2 / Nucleobindin 2
Species	Human
Conjugation	Un-conjugated
Alternate Names	HEL-S-109; NEFA; Nucleobindin-2; Gastric cancer antigen Zg4; Prepronesfatin; DNA-binding protein NEFA

Application Instructions

Application table	Application	Dilution
	IHC-P	5-10 µg/mL
	IP	10 µg/mL
	WB	1 µg/mL
Application Note	* The dilutions indicate recommended starting dilutions and the optimal dilutions or concentrations should be determined by the scientist.	

Properties

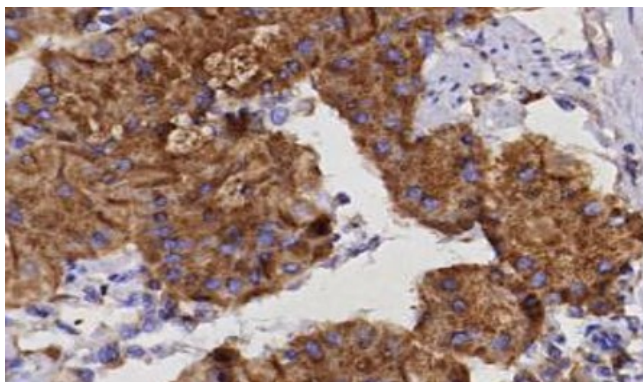
Form	Liquid
Purification	Protein A purification
Buffer	PBS with 0.09% sodium azide
Storage instruction	For continuous use, store undiluted antibody at 2-8°C for up to a week. For long-term storage, aliquot and store at -20°C or below. Storage in frost free freezers is not recommended. Avoid repeated freeze/thaw cycles. Suggest spin the vial prior to opening. The antibody solution should be gently mixed before use.
Note	For laboratory research only, not for drug, diagnostic or other use.

Bioinformation

Gene Symbol	NUCB2
-------------	-------

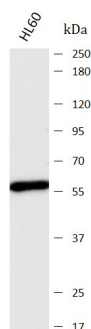
Gene Full Name	nucleobindin 2
Background	This gene encodes a protein with a suggested role in calcium level maintenance, eating regulation in the hypothalamus, and release of tumor necrosis factor from vascular endothelial cells. This protein binds calcium and has EF-folding domains. [provided by RefSeq, Oct 2011]
Function	Calcium-binding protein. May have a role in calcium homeostasis. Nesfatin-1: Anorexigenic peptide, seems to play an important role in hypothalamic pathways regulating food intake and energy homeostasis, acting in a leptin-independent manner. May also exert hypertensive roles and modulate blood pressure through directly acting on peripheral arterial resistance (By similarity). [UniProt]
Calculated Mw	32 kDa
PTM	The N-terminal may be partly blocked. [UniProt]
Cellular Localization	Golgi apparatus, Membrane, Peripheral membrane protein, Cytoplasm, Secreted, Endoplasmic reticulum, Nucleus envelope. [UniProt]

Images



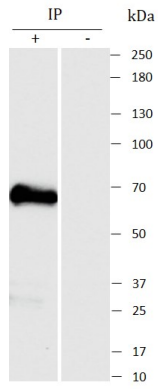
ARG44717 anti-NUCB2 / Nucleobindin 2 antibody IHC-P image

Immunohistochemistry: Human stomach stained with ARG44717 anti-NUCB2 / Nucleobindin 2 antibody at 5 µg/mL dilution.



ARG44717 anti-NUCB2 / Nucleobindin 2 antibody WB image

Western blot: HL60 stained with ARG44717 anti-NUCB2 / Nucleobindin 2 antibody at 1 µg/mL dilution.



ARG44717 anti-NUCB2 / Nucleobindin 2 antibody IP image

Immunoprecipitation: HL60 lysate immunoprecipitated with 2.5 μ g of ARG44717 anti-NUCB2 / Nucleobindin 2 antibody.