

ARG44691 anti-PSA antibody

Package: 50 µg
Store at: -20°C

Summary

Product Description	Mouse Monoclonal antibody recognizes PSA (free)
Tested Reactivity	Hu
Tested Application	IP, WB
Host	Mouse
Clonality	Monoclonal
Isotype	IgG1
Target Name	PSA
Species	Human
Conjugation	Un-conjugated
Alternate Names	Prostate-specific antigen; Gamma-seminoprotein; APS; PSA; EC 3.4.21.77; Kallikrein-3; P-30 antigen; Semenogelase; hK3; Semin; KLK2A1

Application Instructions

Application table	Application	Dilution
	IP	10 µg/mL
	WB	1 µg/mL
Application Note	* The dilutions indicate recommended starting dilutions and the optimal dilutions or concentrations should be determined by the scientist.	

Properties

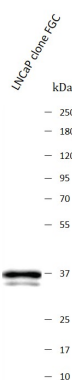
Form	Liquid
Purification	Protein A purification
Buffer	PBS with 0.09% sodium azide
Storage instruction	For continuous use, store undiluted antibody at 2-8°C for up to a week. For long-term storage, aliquot and store at -20°C or below. Storage in frost free freezers is not recommended. Avoid repeated freeze/thaw cycles. Suggest spin the vial prior to opening. The antibody solution should be gently mixed before use.
Note	For laboratory research only, not for drug, diagnostic or other use.

Bioinformation

Gene Symbol	KLK3
Gene Full Name	kallikrein-related peptidase 3

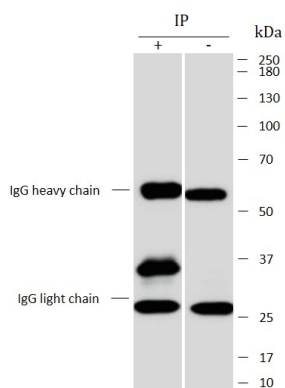
Background	Free prostate specific antigen (fPSA) is the unbounded form of PSA. Study has shown that low percentage of fPSA in total PSA (tPSA) is associated with high risk of prostate cancer. Using percentage of fPSA in tPSA can enhance the predication of prostate cancer and avoid unnecessary biopsies in prostate screen.
Function	Hydrolyzes semenogelin-1 thus leading to the liquefaction of the seminal coagulum. [UniProt]
Calculated Mw	29 kDa

Images



ARG44691 anti-PSA antibody WB image

Western blot: LNCaP clone FGC stained with ARG44691 anti-PSA antibody at 1 μ g/mL dilution.



ARG44691 anti-PSA antibody IP image

Immunoprecipitation: LNCaP clone FGC lysate immunoprecipitated with 2.5 μ g of ARG44691 anti-PSA antibody.