

## ARG44682 anti-Mitofilin antibody

Package: 50 µg  
Store at: -20°C

### Summary

Product Description	Mouse Monoclonal antibody recognizes Mitofilin
Tested Reactivity	Hu
Tested Application	IHC-P, IP, WB
Host	Mouse
Clonality	Monoclonal
Isotype	IgG1
Target Name	Mitofilin
Species	Human
Conjugation	Un-conjugated
Alternate Names	Cell proliferation-inducing gene 4/52 protein; P89; MICOS complex subunit MIC60; PIG52; P87/89; HMP; P87; Mitofilin; Mic60; PIG4; p87/89; MINOS2; Mitochondrial inner membrane protein

### Application Instructions

Application table	Application	Dilution
	IHC-P	5-10 µg/mL
	IP	10 µg/mL
	WB	1 µg/mL
Application Note	* The dilutions indicate recommended starting dilutions and the optimal dilutions or concentrations should be determined by the scientist.	

### Properties

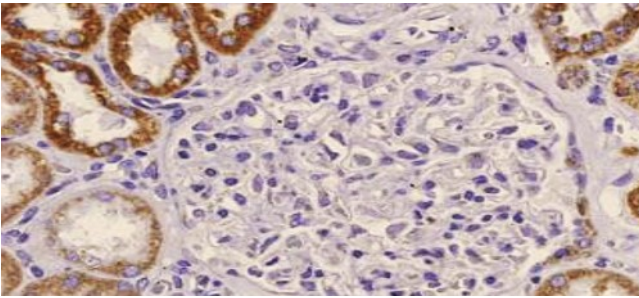
Form	Liquid
Purification	Protein A purification
Buffer	PBS with 0.09% sodium azide
Storage instruction	For continuous use, store undiluted antibody at 2-8°C for up to a week. For long-term storage, aliquot and store at -20°C or below. Storage in frost free freezers is not recommended. Avoid repeated freeze/thaw cycles. Suggest spin the vial prior to opening. The antibody solution should be gently mixed before use.
Note	For laboratory research only, not for drug, diagnostic or other use.

### Bioinformation

Gene Symbol	IMMT
-------------	------

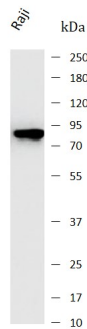
Gene Full Name	inner membrane protein, mitochondrial
Function	Component of the MICOS complex, a large protein complex of the mitochondrial inner membrane that plays crucial roles in the maintenance of crista junctions, inner membrane architecture, and formation of contact sites to the outer membrane. Plays an important role in the maintenance of the MICOS complex stability and the mitochondrial cristae morphology. [UniProt]
Calculated Mw	84 kDa
PTM	N-glycosylation enhances cell surface expression and lengthens receptor half-life by preventing degradation in the ER.
Cellular Localization	Mitochondrion inner membrane; Single-pass membrane protein

## Images



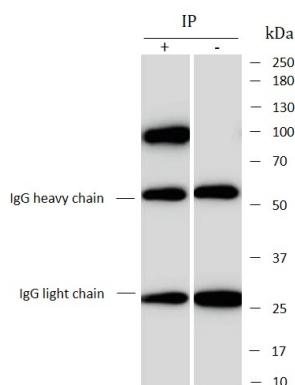
ARG44682 anti-Mitofilin antibody IHC-P image

Immunohistochemistry: Human Kidney stained with ARG44682 anti-Mitofilin antibody at 5 µg/mL dilution.



ARG44682 anti-Mitofilin antibody WB image

Western blot: Raji stained with ARG44682 anti-Mitofilin antibody at 1 µg/mL dilution.



ARG44682 anti-Mitofilin antibody IP image

Immunoprecipitation: MCF7 lysate immunoprecipitated with 2.5 µg of ARG44682 anti-Mitofilin antibody.