

## ARG44670 anti-TIM1 / KIM1 antibody

Package: 50 µg  
Store at: -20°C

### Summary

Product Description	Mouse Monoclonal antibody recognizes TIM1 / KIM1
Tested Reactivity	Hu
Tested Application	IP, WB
Host	Mouse
Clonality	Monoclonal
Isotype	IgG1
Target Name	TIM1 / KIM1
Species	Human
Conjugation	Un-conjugated
Alternate Names	HAVCR1; Hepatitis A Virus Cellular Receptor 1; TIM-1; TIMD1; TIM1; KIM1; Kidney Injury Molecule 1; HAVCR-1; HAVCR; CD365; T-Cell Immunoglobulin Mucin Family Member 1; T-Cell Immunoglobulin Mucin Receptor 1; T-Cell Membrane Protein 1; TIMD-1; KIM-1; TIM; T-Cell Immunoglobulin And Mucin Domain-Containing Protein 1; T Cell Immunoglobulin Domain And Mucin Domain Protein 1; CD365 Antigen; HAVcr-1

### Application Instructions

Application table	Application	Dilution
	IP	10 µg/mL
	WB	1 µg/mL
Application Note	* The dilutions indicate recommended starting dilutions and the optimal dilutions or concentrations should be determined by the scientist.	

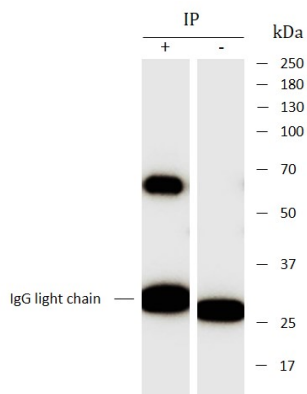
### Properties

Form	Liquid
Purification	Protein A purification
Buffer	PBS with 0.09% sodium azide
Storage instruction	For continuous use, store undiluted antibody at 2-8°C for up to a week. For long-term storage, aliquot and store at -20°C or below. Storage in frost free freezers is not recommended. Avoid repeated freeze/thaw cycles. Suggest spin the vial prior to opening. The antibody solution should be gently mixed before use.
Note	For laboratory research only, not for drug, diagnostic or other use.

### Bioinformation

Gene Symbol	HAVCR1
Gene Full Name	Hepatitis A Virus Cellular Receptor 1
Background	The protein encoded by this gene is a membrane receptor for both human hepatitis A virus (HHAV) and TIMD4. The encoded protein may be involved in the moderation of asthma and allergic diseases. The reference genome represents an allele that retains a MTTVP amino acid segment that confers protection against atopy in HHAV seropositive individuals. The protein is a receptor for multiple other viruses, including Ebola virus, Marburg virus, Dengue virus, and Zika virus and is a possible entry factor for SARS-CoV-2 and other coronaviruses. [provided by RefSeq, Sep 2021]
Function	Phosphatidylserine receptor that plays an important functional role in regulatory B-cells homeostasis including generation, expansion and suppressor functions. As P-selectin/SELPLG ligand, plays a specialized role in activated but not naive T-cell trafficking during inflammatory responses
Calculated Mw	39 kDa
PTM	Disulfide bond, Glycoprotein, Isopeptide bond, Ubl conjugation
Cellular Localization	Cell membrane, Membrane

## Images



ARG44670 anti-TIM1 / KIM1 antibody IP image

Immunoprecipitation: HEK293 lysate immunoprecipitated with 2.5 µg of ARG44670 anti-TIM1 / KIM1 antibody.



ARG44670 anti-TIM1 / KIM1 antibody WB image

Western blot: HEK293 stained with ARG44670 anti-TIM1 / KIM1 antibody at 1 µg/mL dilution.