

## ARG44663 anti-FH / Fumarase antibody

Package: 50 µg  
Store at: -20°C

### Summary

Product Description	Mouse Monoclonal antibody recognizes FH / Fumarase
Tested Reactivity	Hu
Tested Application	IP, WB
Host	Mouse
Clonality	Monoclonal
Isotype	IgG2a
Target Name	FH / Fumarase
Species	Human
Conjugation	Un-conjugated
Alternate Names	FH; Fumarate Hydratase; Fumarase; Fumarate Hydratase, Mitochondrial; EC 4.2.1.2; HsFH; Epididymis Secretory Sperm Binding Protein; HLRCC; MCUL1; FMRD; LRCC; MCL

### Application Instructions

Application table	Application	Dilution
	IP	10 µg/mL
	WB	1 µg/mL
Application Note	* The dilutions indicate recommended starting dilutions and the optimal dilutions or concentrations should be determined by the scientist.	
Observed Size	~50 kDa	

### Properties

Form	Liquid
Purification	Protein A purification
Buffer	PBS with 0.09% sodium azide
Storage instruction	For continuous use, store undiluted antibody at 2-8°C for up to a week. For long-term storage, aliquot and store at -20°C or below. Storage in frost free freezers is not recommended. Avoid repeated freeze/thaw cycles. Suggest spin the vial prior to opening. The antibody solution should be gently mixed before use.
Note	For laboratory research only, not for drug, diagnostic or other use.

### Bioinformation

Gene Symbol	FH
-------------	----

<b>Gene Full Name</b>	Fumarate Hydratase
<b>Background</b>	The protein encoded by this gene is an enzymatic component of the tricarboxylic acid (TCA) cycle, or Krebs cycle, and catalyzes the formation of L-malate from fumarate. It exists in both a cytosolic form and an N-terminal extended form, differing only in the translation start site used. The N-terminal extended form is targeted to the mitochondrion, where the removal of the extension generates the same form as in the cytoplasm. It is similar to some thermostable class II fumarases and functions as a homotetramer. Mutations in this gene can cause fumarase deficiency and lead to progressive encephalopathy. [provided by RefSeq, Jul 2008]
<b>Function</b>	Catalyzes the reversible stereospecific interconversion of fumarate to L-malate.  Experiments in other species have demonstrated that specific isoforms of this protein act in defined pathways and favor one direction over the other (Probable). [UniProt]
<b>Calculated Mw</b>	55 kDa
<b>PTM</b>	Acetylation, Phosphoprotein. [UniProt]
<b>Cellular Localization</b>	Chromosome, Cytoplasm, Mitochondrion, Nucleus. [UniProt]

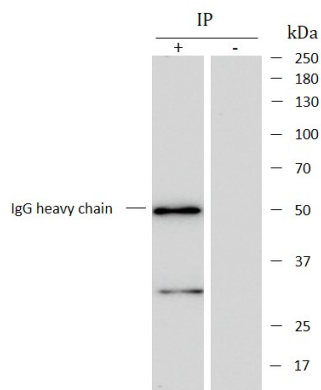
## Images

ARG44663 anti-FH / Fumarase antibody WB image



Western blot: Ramos stained with ARG44663 anti-FH / Fumarase antibody at 1 µg/mL dilution.

ARG44663 anti-FH / Fumarase antibody IP image



Immunoprecipitation: Ramos lysate immunoprecipitated with 2.5 µg of ARG44663 anti-FH / Fumarase antibody.