

ARG44656 anti-Enolase 1 antibody

Package: 50 µg
Store at: -20°C

Summary

Product Description	Mouse Monoclonal antibody recognizes Enolase 1
Tested Reactivity	Hu
Tested Application	ELISA, IHC-P, IP, WB
Host	Mouse
Clonality	Monoclonal
Isotype	IgG1
Target Name	Enolase 1
Species	Human
Conjugation	Un-conjugated
Alternate Names	ENO1; Enolase 1; Alpha-Enolase; ENO1L1; MBP-1; MPB1; PPH; ENO1 Intronic Transcript 1 (Non-Protein Coding); 2-Phospho-D-Glycerate Hydro-Lyase; Plasminogen-Binding Protein; ENO1 Intronic Transcript 1; Phosphopyruvate Hydratase; Enolase 1, (Alpha); Non-Neural Enolase; EC 4.2.1.11; ENO1-IT1; NNE; Epididymis Secretory Protein Li 17; C-Myc Promoter-Binding Protein-1; MYC Promoter-Binding Protein 1; C-Myc Promoter-Binding Protein; Alpha Enolase Like 1; Tau-Crystallin; Enolase-Alpha; HEL-S-17; EC 4.2.1; MBPB1; MPB-1

Application Instructions

Application table	Application	Dilution
	ELISA	5 µg/mL
	IHC-P	2 µg/mL
	IP	10 µg/mL
	WB	1 µg/mL
Application Note	* The dilutions indicate recommended starting dilutions and the optimal dilutions or concentrations should be determined by the scientist.	

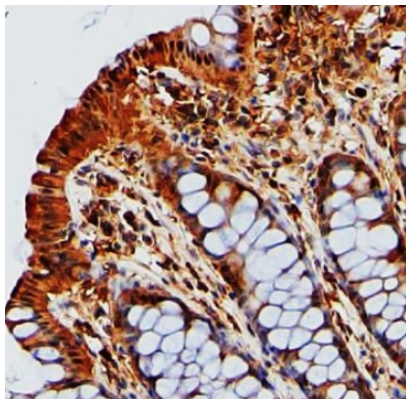
Properties

Form	Liquid
Purification	Protein A purification
Buffer	PBS with 0.09% sodium azide
Storage instruction	For continuous use, store undiluted antibody at 2-8°C for up to a week. For long-term storage, aliquot and store at -20°C or below. Storage in frost free freezers is not recommended. Avoid repeated freeze/thaw cycles. Suggest spin the vial prior to opening. The antibody solution should be gently mixed before use.
Note	For laboratory research only, not for drug, diagnostic or other use.

Bioinformation

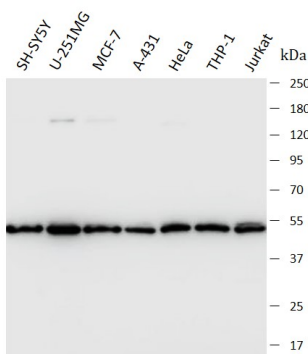
Gene Symbol	ENO1
Gene Full Name	Enolase 1
Background	This gene encodes alpha-enolase, one of three enolase isoenzymes found in mammals. Each isoenzyme is a homodimer composed of 2 alpha, 2 gamma, or 2 beta subunits, and functions as a glycolytic enzyme. Alpha-enolase in addition, functions as a structural lens protein (tau-crystallin) in the monomeric form. Alternative splicing of this gene results in a shorter isoform that has been shown to bind to the c-myc promoter and function as a tumor suppressor. Several pseudogenes have been identified, including one on the long arm of chromosome 1. Alpha-enolase has also been identified as an autoantigen in Hashimoto encephalopathy. [provided by RefSeq, Jan 2011]
Function	Glycolytic enzyme the catalyzes the conversion of 2-phosphoglycerate to phosphoenolpyruvate. Stimulates immunoglobulin production. [UniProt]
Calculated Mw	47 kDa
PTM	Acetylation, Hydroxylation, Isopeptide bond, Phosphoprotein, Ubl conjugation. [UniProt]
Cellular Localization	Cell membrane, Cytoplasm, Membrane, Nucleus. [UniProt]

Images



ARG44656 anti-Enolase 1 antibody IHC-P image

Immunohistochemistry: Human Colon stained with ARG44656 anti-Enolase 1 antibody at 2 µg/mL dilution.



ARG44656 anti-Enolase 1 antibody WB image

Western blot: SH-SY5Y, U-251MG, MCF-7, A-431, HeLa, THP-1, Jurkat stained with ARG44656 anti-Enolase 1 antibody at 1 µg/mL dilution.

ARG44656 anti-Enolase 1 antibody IP image

Immunoprecipitation: MCF7 lysate immunoprecipitated with 2.5 μ g of ARG44656 anti-Enolase 1 antibody.

