

ARG44643 anti-Claudin 3 antibody

Package: 50 µg
Store at: -20°C

Summary

Product Description	Mouse Monoclonal antibody recognizes Claudin 3
Tested Reactivity	Hu
Tested Application	IHC-P, IP, WB
Host	Mouse
Clonality	Monoclonal
Isotype	IgG2a
Target Name	Claudin 3
Species	Human
Conjugation	Un-conjugated
Alternate Names	CLDN3; Claudin 3; HRVP1; Clostridium Perfringens Enterotoxin Receptor 2; CPE-Receptor 2; Claudin-3; CPE-R2; C7orf1; CPETR2; RVP1; Ventral Prostate.1-Like Protein; CPE-R 2; Rat Ventral Prostate.1 Protein Homolog; Ventral Prostate.1 Protein Homolog

Application Instructions

Application table	Application	Dilution
	IHC-P	5 µg/mL
	IP	10 µg/mL
	WB	1 µg/mL
Application Note	* The dilutions indicate recommended starting dilutions and the optimal dilutions or concentrations should be determined by the scientist.	

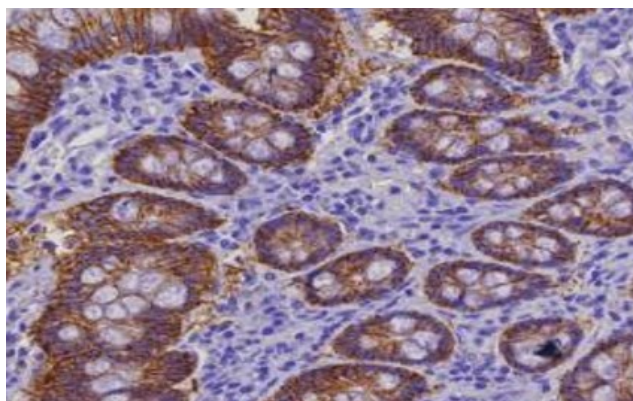
Properties

Form	Liquid
Purification	Protein A purification
Buffer	PBS with 0.09% sodium azide
Preservative	0.09% sodium azide
Storage instruction	For continuous use, store undiluted antibody at 2-8°C for up to a week. For long-term storage, aliquot and store at -20°C or below. Storage in frost free freezers is not recommended. Avoid repeated freeze/thaw cycles. Suggest spin the vial prior to opening. The antibody solution should be gently mixed before use.
Note	For laboratory research only, not for drug, diagnostic or other use.

Bioinformation

Gene Symbol	CLDN3
Gene Full Name	Claudin 3
Background	Tight junctions represent one mode of cell-to-cell adhesion in epithelial or endothelial cell sheets, forming continuous seals around cells and serving as a physical barrier to prevent solutes and water from passing freely through the paracellular space. These junctions are comprised of sets of continuous networking strands in the outwardly facing cytoplasmic leaflet, with complementary grooves in the inwardly facing extracytoplasmic leaflet. The protein encoded by this intronless gene, a member of the claudin family, is an integral membrane protein and a component of tight junction strands. It is also a low-affinity receptor for Clostridium perfringens enterotoxin, and shares aa sequence similarity with a putative apoptosis-related protein found in rat. [provided by RefSeq, Jul 2008]
Function	Barrier-forming claudin. Plays a major role in tight junction-specific obliteration of the intercellular space, through calcium-independent cell-adhesion activity. [UniProt]
Calculated Mw	23 kDa
PTM	Phosphoprotein. [UniProt]
Cellular Localization	Cell junction, Cell membrane, Membrane, Tight junction. [UniProt]

Images



ARG44643 anti-Claudin 3 antibody IHC-P image

Immunohistochemistry: Human Colon stained with ARG44643 anti-Claudin 3 antibody at 5 µg/mL dilution.



ARG44643 anti-Claudin 3 antibody WB image

Western blot: HT29 stained with ARG44643 anti-Claudin 3 antibody at 1 µg/mL dilution.

ARG44643 anti-Claudin 3 antibody IP image

Immunoprecipitation: HT29 lysate immunoprecipitated with 2.5 μ g of ARG44643 anti-Claudin 3 antibody.

