

ARG44642 anti-CLASP2 antibody

Package: 50 µg
Store at: -20°C

Summary

Product Description	Rat Monoclonal antibody recognizes CLASP2
Tested Reactivity	Hu, Ms
Tested Application	IP, WB
Host	Rat
Clonality	Monoclonal
Isotype	IgG2b
Target Name	CLASP2
Species	Mouse
Conjugation	Un-conjugated
Alternate Names	CLASP2; Cytoplasmic Linker Associated Protein 2; KIAA0627; CLIP-Associating Protein 2; Protein Orbit Homolog 2; Cytoplasmic Linker-Associated Protein 2; Multiple Asters (Mast)-Like Homolog 2; CLIP-Associating Protein CLASP2; HOrbit2

Application Instructions

Application table	Application	Dilution
	IP	10 µg/mL
	WB	1 µg/mL
Application Note	* The dilutions indicate recommended starting dilutions and the optimal dilutions or concentrations should be determined by the scientist.	

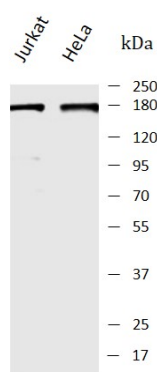
Properties

Form	Liquid
Purification	Protein A purification
Buffer	PBS with 0.09% sodium azide
Preservative	0.09% sodium azide
Storage instruction	For continuous use, store undiluted antibody at 2-8°C for up to a week. For long-term storage, aliquot and store at -20°C or below. Storage in frost free freezers is not recommended. Avoid repeated freeze/thaw cycles. Suggest spin the vial prior to opening. The antibody solution should be gently mixed before use.
Note	For laboratory research only, not for drug, diagnostic or other use.

Bioinformation

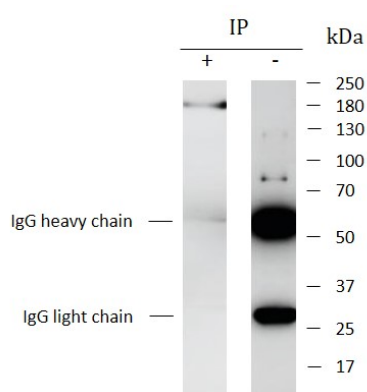
Gene Symbol	CLASP2
Gene Full Name	Cytoplasmic Linker Associated Protein 2
Background	Enables cytoskeletal protein binding activity; dystroglycan binding activity; and protein tyrosine kinase binding activity. Involved in several processes, including microtubule cytoskeleton organization; positive regulation of extracellular matrix organization; and regulation of supramolecular fiber organization. Located in several cellular components, including basal cortex; cortical microtubule plus-end; and ruffle membrane. Colocalizes with focal adhesion; kinetochore; and microtubule cytoskeleton. [provided by Alliance of Genome Resources, Apr 2022]
Function	Acts as a mediator of ERBB2-dependent stabilization of microtubules at the cell cortex. [UniProt]
Calculated Mw	141 kDa
PTM	Phosphoprotein. [UniProt]
Cellular Localization	Cell membrane, Cell projection, Centromere, Chromosome, Cytoplasm, Cytoskeleton, Golgi apparatus, Kinetochore, Membrane, Microtubule. [UniProt]

Images



ARG44642 anti-CLASP2 antibody WB image

Western blot: Jurkat and HeLa stained with ARG44642 anti-CLASP2 antibody at 1 µg/mL dilution.



ARG44642 anti-CLASP2 antibody IP image

Immunoprecipitation: HeLa lysate immunoprecipitated with 2.5 µg of ARG44642 anti-CLASP2 antibody.