

ARG44631 anti-Complement C3 antibody

Package: 50 µg
Store at: -20°C

Summary

Product Description	Mouse Monoclonal antibody recognizes Complement C3.
Tested Reactivity	Hu
Tested Application	IP, WB
Host	Mouse
Clonality	Monoclonal
Isotype	IgG2b
Target Name	Complement C3
Species	Human
Conjugation	Un-conjugated
Alternate Names	C3; Complement C3; CPAMD1; ARMD9; C3a; C3b; C3 And PZP-Like Alpha-2-Macroglobulin Domain-Containing Protein 1; Complement Component C3a; Complement Component C3b; Complement Component 3; C3a Anaphylatoxin; Prepro-C3; Epididymis Secretory Sperm Binding Protein Li 62p; Acylation-Stimulating Protein Cleavage Product; HEL-S-62p; AHUS5; ASP

Application Instructions

Application table	Application	Dilution
	IP	10 µg/mL
	WB	1 µg/mL
Application Note	* The dilutions indicate recommended starting dilutions and the optimal dilutions or concentrations should be determined by the scientist.	

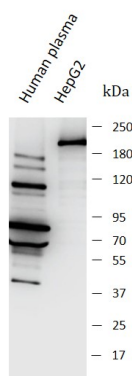
Properties

Form	Liquid
Purification	Protein A purification
Buffer	PBS with 0.09% sodium azide
Preservative	0.09% sodium azide
Storage instruction	For continuous use, store undiluted antibody at 2-8°C for up to a week. For long-term storage, aliquot and store at -20°C or below. Storage in frost free freezers is not recommended. Avoid repeated freeze/thaw cycles. Suggest spin the vial prior to opening. The antibody solution should be gently mixed before use.
Note	For laboratory research only, not for drug, diagnostic or other use.

Bioinformation

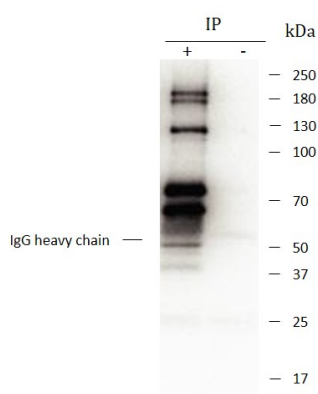
Gene Symbol	C3
Gene Full Name	Complement C3
Background	Complement component C3 plays a central role in the activation of complement system. Its activation is required for both classical and alternative complement activation pathways. The encoded preproprotein is proteolytically processed to generate alpha and beta subunits that form the mature protein, which is then further processed to generate numerous peptide products. The C3a peptide, also known as the C3a anaphylatoxin, modulates inflammation and possesses antimicrobial activity. Mutations in this gene are associated with atypical hemolytic uremic syndrome and age-related macular degeneration in human patients. [provided by RefSeq, Nov 2015]
Function	Adipogenic hormone that stimulates triglyceride (TG) synthesis and glucose transport in adipocytes, regulating fat storage and playing a role in postprandial TG clearance. Appears to stimulate TG synthesis via activation of the PLC, MAPK and AKT signaling pathways. Ligand for C5AR2. Promotes the phosphorylation, ARRB2-mediated internalization and recycling of C5AR2. [UniProt]
Calculated Mw	187 kDa
PTM	Cleavage on pair of basic residues, Disulfide bond, Glycoprotein, Phosphoprotein, Thioester bond. [UniProt]
Cellular Localization	Secreted. [UniProt]

Images



ARG44631 anti-Complement C3 antibody WB image

Western blot: Human plasma and HepG2 stained with ARG44631 anti-Complement C3 antibody at 1 $\mu\text{g}/\text{mL}$ dilution.



ARG44631 anti-Complement C3 antibody IP image

Immunoprecipitation: A549 lysate immunoprecipitated with 2.5 μg of ARG44631 anti-Complement C3 antibody.