

ARG44618 anti-alpha Fetoprotein antibody

Package: 50 µg
Store at: -20°C

Summary

Product Description	Mouse Monoclonal antibody recognizes alpha Fetoprotein
Tested Reactivity	Hu
Tested Application	IHC-P, IP, WB
Host	Mouse
Clonality	Monoclonal
Isotype	IgG1
Target Name	alpha Fetoprotein
Species	Human
Conjugation	Un-conjugated
Alternate Names	AFP; Alpha Fetoprotein; Alpha-Fetoprotein; HPAFP; FETA; Alpha-1-Fetoprotein; Alpha-Fetoglobulin; AFPD

Application Instructions

Application table	Application	Dilution
	IHC-P	2 µg/mL
	IP	10 µg/mL
	WB	1 µg/mL
Application Note	* The dilutions indicate recommended starting dilutions and the optimal dilutions or concentrations should be determined by the scientist.	

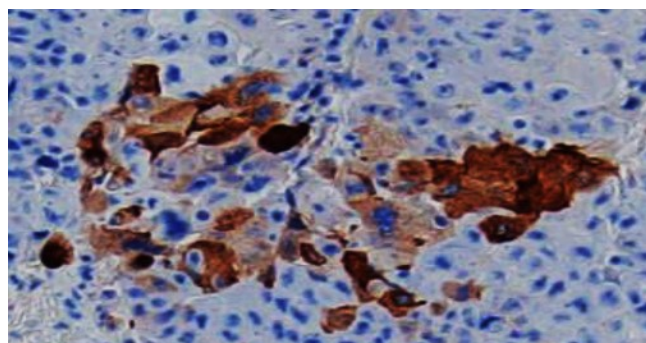
Properties

Form	Liquid
Purification	Protein A purification
Buffer	PBS with 0.09% sodium azide
Preservative	0.09% sodium azide
Storage instruction	For continuous use, store undiluted antibody at 2-8°C for up to a week. For long-term storage, aliquot and store at -20°C or below. Storage in frost free freezers is not recommended. Avoid repeated freeze/thaw cycles. Suggest spin the vial prior to opening. The antibody solution should be gently mixed before use.
Note	For laboratory research only, not for drug, diagnostic or other use.

Bioinformation

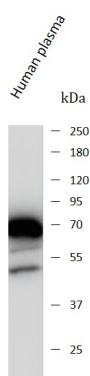
Gene Symbol	AFP
Gene Full Name	Alpha Fetoprotein
Background	This gene encodes alpha-fetoprotein, a major plasma protein produced by the yolk sac and the liver during fetal life. Alpha-fetoprotein expression in adults is often associated with hepatocarcinoma and with teratoma, and has prognostic value for managing advanced gastric cancer. However, hereditary persistence of alpha-fetoprotein may also be found in individuals with no obvious pathology. The protein is thought to be the fetal counterpart of serum albumin, and the alpha-fetoprotein and albumin genes are present in tandem in the same transcriptional orientation on chromosome 4. Alpha-fetoprotein is found in monomeric as well as dimeric and trimeric forms, and binds copper, nickel, fatty acids and bilirubin. The level of alpha-fetoprotein in amniotic fluid is used to measure renal loss of protein to screen for spina bifida and anencephaly. [provided by RefSeq, Oct 2019]
Function	Binds copper, nickel, and fatty acids as well as, and bilirubin less well than, serum albumin. Only a small percentage (less than 2%) of the human AFP shows estrogen-binding properties. [UniProt]
Calculated Mw	69 kDa
PTM	Disulfide bond, Glycoprotein, Phosphoprotein, Sulfation. [UniProt]
Cellular Localization	Secreted. [UniProt]

Images



ARG44618 anti-alpha Fetoprotein antibody IHC-P image

Immunohistochemistry: Human testis stained with ARG44618 anti-alpha Fetoprotein antibody at 2 μ g/mL dilution.



ARG44618 anti-alpha Fetoprotein antibody WB image

Western blot: Human plasma stained with ARG44618 anti-alpha Fetoprotein antibody at 1 μ g/mL dilution.