

ARG44589 anti-CYP2D6 antibody

Package: 50 µg
Store at: -20°C

Summary

Product Description	Rabbit Polyclonal antibody recognizes CYP2D6
Tested Reactivity	Hu, Ms, Rat
Tested Application	IHC-P, WB
Host	Rabbit
Clonality	Polyclonal
Isotype	IgG
Target Name	CYP2D6
Species	Human
Immunogen	A synthetic peptide of human CYP2D6.
Conjugation	Un-conjugated
Alternate Names	CYP2D6; Cytochrome P450 Family 2 Subfamily D Member 6; P450-DB1 P450C2D; CYP2DL1; CYP2D; CPD6; Cytochrome P450, Subfamily IID (Debrisoquine, Sparteine, Etc., -Metabolising), Polypeptide 8 Pseudogene 2; Cytochrome P450, Subfamily II (Debrisoquine, Sparteine, Etc., -Metabolising), Polypeptide 7 Pseudogene 2; Cytochrome P450, Subfamily IID (Debrisoquine, Sparteine, Etc., -Metabolizing), Polypeptide 6; Cytochrome P450, Family 2, Subfamily D, Polypeptide 7 Pseudogene 2; Cytochrome P450, Family 2, Subfamily D, Polypeptide 8 Pseudogene 2; Cytochrome P450, Family 2, Subfamily D, Polypeptide 6; Cholesterol 25-Hydroxylase; Debrisoquine 4-Hydroxylase; Cytochrome P450 2D6; Cytochrome P450-DB1; CYP2D7AP; CYP2D7BP; CYP2D7P2; CYP2D8P2; CYP11D6; Cytochrome P450, Subfamily IID (Debrisoquine, Sparteine, Etc., -Metabolizing)-Like 1; Flavoprotein-Linked Monooxygenase; Nonfunctional Cytochrome P450 2D6; Microsomal Monooxygenase; Xenobiotic Monooxygenase; EC 1.14.14.; EC 1.14.14.1; P450DB1

Application Instructions

Application table	Application	Dilution
	IHC-P	0.5-1µg/ml
	WB	0.1-0.5µg/ml
Application Note	* The dilutions indicate recommended starting dilutions and the optimal dilutions or concentrations should be determined by the scientist.	

Properties

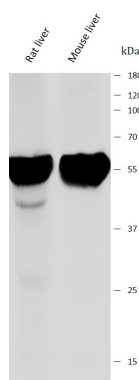
Form	Liquid
Purification	Affinity purification with immunogen.
Buffer	0.2% Na ₂ HPO ₄ , 0.9% NaCl, 0.05% Sodium azide and 4% Trehalose.
Preservative	0.05% Sodium azide
Stabilizer	4% Trehalose

Concentration	0.5 mg/ml
Storage instruction	For continuous use, store undiluted antibody at 2-8°C for up to a week. For long-term storage, aliquot and store at -20°C or below. Storage in frost free freezers is not recommended. Avoid repeated freeze/thaw cycles. Suggest spin the vial prior to opening. The antibody solution should be gently mixed before use.
Note	For laboratory research only, not for drug, diagnostic or other use.

Bioinformation

Gene Symbol	CYP2D6
Gene Full Name	Cytochrome P450 Family 2 Subfamily D Member 6
Background	This gene encodes a member of the cytochrome P450 superfamily of enzymes. The cytochrome P450 proteins are monooxygenases which catalyze many reactions involved in drug metabolism and synthesis of cholesterol, steroids and other lipids. This protein localizes to the endoplasmic reticulum and is known to metabolize as many as 25% of commonly prescribed drugs. Its substrates include antidepressants, antipsychotics, analgesics and antitussives, beta adrenergic blocking agents, antiarrhythmics and antiemetics. The gene is highly polymorphic in the human population; certain alleles result in the poor metabolizer phenotype, characterized by a decreased ability to metabolize the enzyme's substrates. Some individuals with the poor metabolizer phenotype have no functional protein since they carry 2 null alleles whereas in other individuals the gene is absent. This gene can vary in copy number and individuals with the ultrarapid metabolizer phenotype can have 3 or more active copies of the gene. Alternatively spliced transcript variants encoding different isoforms have been found for this gene. [provided by RefSeq, Jul 2014]
Function	Catalyzes the oxidative transformations of all-trans retinol to all-trans retinal, a precursor for the active form all-trans-retinoic acid. Also involved in the oxidative metabolism of drugs such as antiarrhythmics, adrenoceptor antagonists, and tricyclic antidepressants.[UniProt]
Calculated Mw	56 kDa
Cellular Localization	Endoplasmic reticulum, Membrane, Microsome.[UniProt]

Images



ARG44589 anti-CYP2D6 antibody WB image

Western blot: Rat liver and Mouse liver stained with ARG44589 anti-CYP2D6 antibody at 0.5 µg/mL dilution.