

ARG44587 anti-SOX2 antibody

Package: 100 µl
Store at: -20°C

Summary

Product Description	Rabbit Monoclonal antibody recognizes SOX2
Tested Reactivity	Hu, Ms
Tested Application	ICC/IF, IHC-P, WB
Host	Rabbit
Clonality	Monoclonal
Isotype	IgG
Target Name	SOX2
Species	Human
Immunogen	Synthetic peptide corresponding to internal region of human SOX2.
Conjugation	Un-conjugated
Alternate Names	SOX2; SRY-Box Transcription Factor 2; SRY (Sex Determining Region Y)-Box 2; Transcription Factor SOX-2; SRY-Box 2; Sex Determining Region Y-Box 2; SRY-Related HMG-Box Gene 2; Transcription Factor SOX2; MCOPS3; ANOP3

Application Instructions

Application table	Application	Dilution
	ICC/IF	1:50-1:200
	IHC-P	1:50-1:100
	WB	1:500-1:1000

Application Note * The dilutions indicate recommended starting dilutions and the optimal dilutions or concentrations should be determined by the scientist.

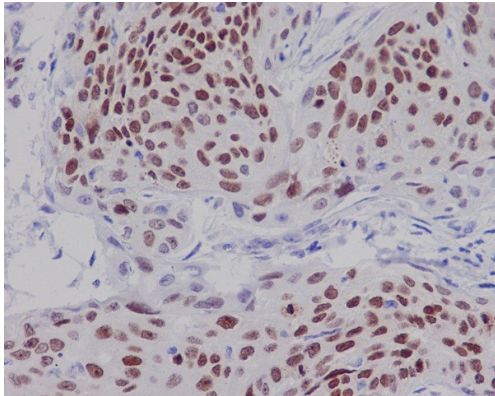
Properties

Form	Liquid
Purification	Affinity Purified
Buffer	PBS (pH 7.4), 150 mM NaCl, 0.02% Sodium azide and 50% Glycerol.
Preservative	0.02% Sodium azide
Stabilizer	50% Glycerol
Storage instruction	For continuous use, store undiluted antibody at 2-8°C for up to a week. For long-term storage, aliquot and store at -20°C or below. Storage in frost free freezers is not recommended. Avoid repeated freeze/thaw cycles. Suggest spin the vial prior to opening. The antibody solution should be gently mixed before use.
Note	For laboratory research only, not for drug, diagnostic or other use.

Bioinformation

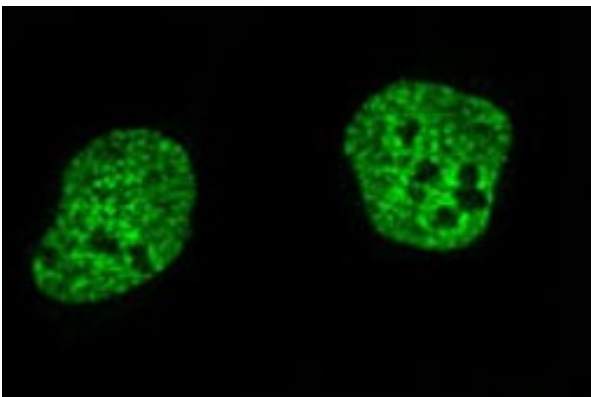
Gene Symbol	SOX2
Gene Full Name	SRY-Box Transcription Factor 2
Background	This intronless gene encodes a member of the SRY-related HMG-box (SOX) family of transcription factors involved in the regulation of embryonic development and in the determination of cell fate. The product of this gene is required for stem-cell maintenance in the central nervous system, and also regulates gene expression in the stomach. Mutations in this gene have been associated with optic nerve hypoplasia and with syndromic microphthalmia, a severe form of structural eye malformation. This gene lies within an intron of another gene called SOX2 overlapping transcript (SOX2OT). [provided by RefSeq, Jul 2008]
Function	Critical for early embryogenesis and for embryonic stem cell pluripotency. May function as a switch in neuronal development. [UniProt]
Calculated Mw	34 kDa
Cellular Localization	Cytoplasm, Nucleus. [UniProt]

Images



ARG44587 anti-SOX2 antibody IHC-P image

Immunohistochemistry: Human cervix carcinoma stained with ARG44587 anti-SOX2 antibody.



ARG44587 anti-SOX2 antibody ICC/IF image

Immunofluorescence: NCCIT stained with ARG44587 anti-SOX2 antibody.

ARG44587 anti-SOX2 antibody WB image

Western blot: F9 stained with ARG44587 anti-SOX2 antibody.

