

ARG44562 anti-Hsp 47 antibody

Package: 50 µl
Store at: -20°C

Summary

Product Description	Rabbit Polyclonal antibody recognizes Hsp 47
Tested Reactivity	Hu, Ms
Tested Application	ICC/IF, WB
Host	Rabbit
Clonality	Polyclonal
Isotype	IgG
Target Name	Hsp 47
Species	Human
Conjugation	Un-conjugated
Alternate Names	SERPINH1; Serpin Family H Member 1; HSP47; SERPINH2; CBP1; CBP2; Serine (Or Cysteine) Proteinase Inhibitor, Clade H (Heat Shock Protein 47), Member 1, (Collagen Binding Protein 1); Serpin Peptidase Inhibitor, Clade H (Heat Shock Protein 47), Member 1, (Collagen Binding Protein 1); Cell Proliferation-Inducing Gene 14 Protein; Rheumatoid Arthritis-Related Antigen RA-A47; Arsenic-Transactivated Protein 3; Collagen Binding Protein 1; 47 KDa Heat Shock Protein; Heat Shock Protein 47; Serpin H1; Colligin; AsTP3; Serine (Or Cysteine) Proteinase Inhibitor, Clade H (Heat Shock Protein 47), Member 2, (Collagen-Binding Protein 2); Serine (Or Cysteine) Proteinase Inhibitor, Clade H (Heat Shock Protein 47), Member 2; Rheumatoid Arthritis Antigen A-47; Collagen-Binding Protein; Colligin-1; Colligin-2; RA-A47; PIG14; PPROM; OI10; Gp46

Application Instructions

Application table	Application	Dilution
	ICC/IF	1:50 - 1:200
	WB	1:500 - 1:1000
Application Note	* The dilutions indicate recommended starting dilutions and the optimal dilutions or concentrations should be determined by the scientist.	

Properties

Form	Liquid
Purification	Affinity Purified Antibody
Buffer	PBS (pH 7.3), 0.01% thimerosal and 50% Glycerol.
Preservative	0.01% thimerosal
Stabilizer	50% Glycerol
Storage instruction	For continuous use, store undiluted antibody at 2-8°C for up to a week. For long-term storage, aliquot and store at -20°C or below. Storage in frost free freezers is not recommended. Avoid repeated freeze/thaw cycles. Suggest spin the vial prior to opening. The antibody solution should be gently mixed

before use.

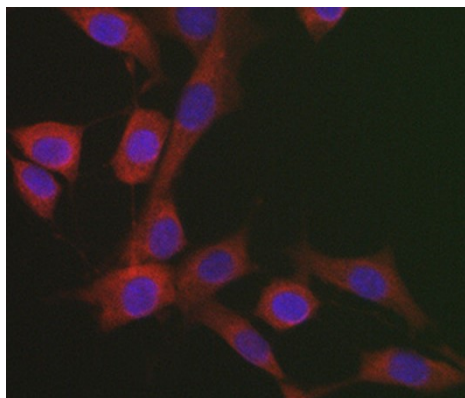
Note

For laboratory research only, not for drug, diagnostic or other use.

Bioinformation

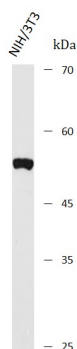
Gene Symbol	SERPINH1
Gene Full Name	Serpin Family H Member 1
Background	This gene encodes a member of the serpin superfamily of serine proteinase inhibitors. The encoded protein is localized to the endoplasmic reticulum and plays a role in collagen biosynthesis as a collagen-specific molecular chaperone. Autoantibodies to the encoded protein have been found in patients with rheumatoid arthritis. Expression of this gene may be a marker for cancer, and nucleotide polymorphisms in this gene may be associated with preterm birth caused by preterm premature rupture of membranes. Alternatively spliced transcript variants have been observed for this gene, and a pseudogene of this gene is located on the short arm of chromosome 9. [provided by RefSeq, May 2011]
Function	Binds specifically to collagen. Could be involved as a chaperone in the biosynthetic pathway of collagen. [UniProt]
Calculated Mw	46 kDa
PTM	Acetylation; Glycoprotein Phosphoprotein. [UniProt]
Cellular Localization	Endoplasmic reticulum. [UniProt]

Images



ARG44562 anti-Hsp 47 antibody ICC/IF image

Immunofluorescence: NIH/3T3 stained with ARG44562 anti-Hsp 47 antibody at 1:100 dilution.



ARG44562 anti-Hsp 47 antibody WB image

Western blot: NIH/3T3 stained with ARG44562 anti-Hsp 47 antibody at 1:1000 dilution.