

ARG44549 anti-Lysozyme antibody

Package: 50 µg
Store at: -20°C

Summary

Product Description	Rabbit Polyclonal antibody recognizes Lysozyme
Tested Reactivity	Hu, Ms, Rat
Tested Application	FACS, WB
Host	Rabbit
Clonality	Polyclonal
Isotype	IgG
Target Name	Lysozyme
Species	Human
Immunogen	Human Lysozyme recombinant protein
Conjugation	Un-conjugated
Alternate Names	EC 3.2.1.17; Lysozyme C; LZM; 1,4-beta-N-acetylmuramidase C

Application Instructions

Application table	Application	Dilution
	FACS	1-3 µg/1x10 ⁶ cells
	WB	0.25-0.5 µg/ml
Application Note	* The dilutions indicate recommended starting dilutions and the optimal dilutions or concentrations should be determined by the scientist.	

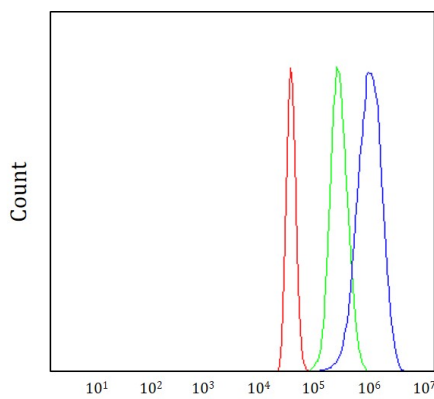
Properties

Form	Liquid
Purification	Affinity purification with immunogen.
Buffer	0.2% Na ₂ HPO ₄ , 0.9% NaCl and 4% Trehalose.
Stabilizer	4% Trehalose
Concentration	0.5 mg/ml
Storage instruction	For continuous use, store undiluted antibody at 2-8°C for up to a week. For long-term storage, aliquot and store at -20°C or below. Storage in frost free freezers is not recommended. Avoid repeated freeze/thaw cycles. Suggest spin the vial prior to opening. The antibody solution should be gently mixed before use.
Note	For laboratory research only, not for drug, diagnostic or other use.

Bioinformation

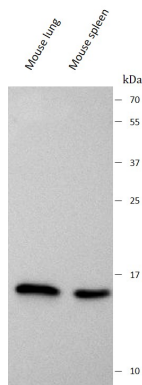
Gene Symbol	LYZ
Gene Full Name	lysozyme
Background	This gene encodes human lysozyme, whose natural substrate is the bacterial cell wall peptidoglycan (cleaving the beta[1-4]glycosidic linkages between N-acetylmuramic acid and N-acetylglucosamine). Lysozyme is one of the antimicrobial agents found in human milk, and is also present in spleen, lung, kidney, white blood cells, plasma, saliva, and tears. The protein has antibacterial activity against a number of bacterial species. Missense mutations in this gene have been identified in heritable renal amyloidosis. [provided by RefSeq, Oct 2014]
Function	Lysozymes have primarily a bacteriolytic function; those in tissues and body fluids are associated with the monocyte-macrophage system and enhance the activity of immunoagents. [UniProt]
Calculated Mw	17 kDa
Cellular Localization	Secreted. [UniProt]

Images



ARG44549 anti-Lysozyme antibody FACS image

Flow Cytometry: HepG2 stained with ARG44549 anti-Lysozyme antibody at 1 $\mu\text{g}/1 \times 10^6$ cells dilution.



ARG44549 anti-Lysozyme antibody WB image

Western blot: Mouse lung and Mouse spleen stained with ARG44549 anti-Lysozyme antibody at 0.5 $\mu\text{g}/\text{mL}$ dilution.