

ARG44547 anti-YTHDC1 antibody

Package: 100 µl
Store at: -20°C

Summary

Product Description	Rabbit Polyclonal antibody recognizes YTHDC1
Tested Reactivity	Hu, Ms, Rat
Tested Application	ICC/IF, WB
Host	Rabbit
Clonality	Polyclonal
Isotype	IgG
Target Name	YTHDC1
Species	Human
Immunogen	Human YTHDC1 fusion protein
Conjugation	Un-conjugated
Alternate Names	YTHDC1; YTH N6-Methyladenosine RNA Binding Protein C1; YT521-B; YT521; YTH Domain Containing 1; KIAA1966; YTH Domain-Containing Protein 1; Splicing Factor YT521; Putative Splicing Factor YT521; Splicing Factor YT521-B

Application Instructions

Application table	Application	Dilution
	ICC/IF	1:50- 1:200
	WB	1:500 - 1:1000
Application Note	* The dilutions indicate recommended starting dilutions and the optimal dilutions or concentrations should be determined by the scientist.	
Observed Size	85, 110 kDa	

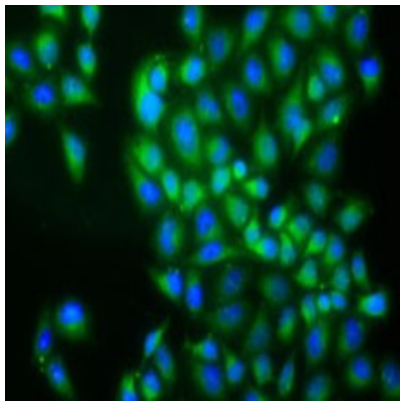
Properties

Form	Liquid
Purification	Affinity Purified
Buffer	PBS (pH 7.4), 0.05% Sodium azide and 40% Glycerol.
Preservative	0.05% Sodium azide
Stabilizer	40% Glycerol
Storage instruction	For continuous use, store undiluted antibody at 2-8°C for up to a week. For long-term storage, aliquot and store at -20°C or below. Storage in frost free freezers is not recommended. Avoid repeated freeze/thaw cycles. Suggest spin the vial prior to opening. The antibody solution should be gently mixed before use.
Note	For laboratory research only, not for drug, diagnostic or other use.

Bioinformation

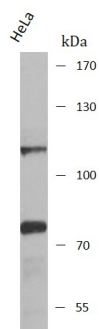
Gene Symbol	YTHDC1
Gene Full Name	YTH N6-Methyladenosine RNA Binding Protein C1
Background	Enables N6-methyladenosine-containing RNA binding activity. Involved in mRNA export from nucleus; mRNA splice site selection; and regulation of gene expression. Located in nuclear speck and plasma membrane.
Function	Regulator of alternative splicing that specifically recognizes and binds N6-methyladenosine (m6A)-containing RNAs.
Calculated Mw	85 kDa
PTM	Isopeptide bond, Phosphoprotein, Ubl conjugation
Cellular Localization	Nucleus

Images



ARG44547 anti-YTHDC1 antibody ICC/IF image

Immunofluorescence: A549 stained with ARG44547 anti-YTHDC1 antibody.



ARG44547 anti-YTHDC1 antibody WB image

Western blot: HeLa stained with ARG44547 anti-YTHDC1 antibody.

ARG44547 anti-YTHDC1 antibody WB image

Western blot: Mouse Lung stained with ARG44547 anti-YTHDC1 antibody.

