

ARG44542 anti-GOLGA7 antibody

Package: 100 µl
Store at: -20°C

Summary

Product Description	Rabbit Polyclonal antibody recognizes GOLGA7
Tested Reactivity	Hu
Tested Application	IHC-P, WB
Host	Rabbit
Clonality	Polyclonal
Isotype	IgG
Target Name	GOLGA7
Species	Human
Immunogen	Human GOLGA7 fusion protein
Conjugation	Un-conjugated
Alternate Names	GOLGA7; Golgin A7; GCP16; GOLGA3AP1; HSPC041; GOLGA7A; Golgi Complex-Associated Protein Of 16 Kda; Golgi Autoantigen, Golgin Subfamily A, 7; Golgin Subfamily A Member 7; Golgi Complex-Associated Protein Of 16kDa

Application Instructions

Application table	Application	Dilution
	IHC-P	1:50-1:100
	WB	1:500-1:1000

Application Note * The dilutions indicate recommended starting dilutions and the optimal dilutions or concentrations should be determined by the scientist.

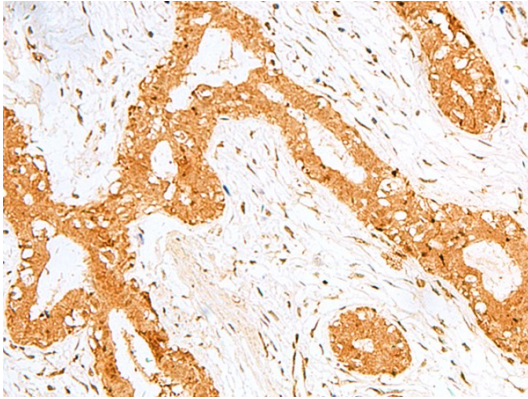
Properties

Form	Liquid
Purification	Affinity purified.
Buffer	PBS (pH 7.4), 0.05% Sodium azide and 40% Glycerol.
Preservative	0.05% Sodium azide
Stabilizer	40% Glycerol
Storage instruction	For continuous use, store undiluted antibody at 2-8°C for up to a week. For long-term storage, aliquot and store at -20°C. Storage in frost free freezers is not recommended. Avoid repeated freeze/thaw cycles. Suggest spin the vial prior to opening. The antibody solution should be gently mixed before use.
Note	For laboratory research only, not for drug, diagnostic or other use.

Bioinformation

Gene Symbol	GOLGA7
Gene Full Name	Golgin A7
Background	Involved in Golgi to plasma membrane protein transport; peptidyl-L-cysteine S-palmitoylation; and protein stabilization. Acts upstream of or within Golgi to plasma membrane transport. Located in Golgi membrane and Golgi stack. Is intrinsic component of Golgi membrane. Part of palmitoyltransferase complex.
Function	May be involved in protein transport from Golgi to cell surface. The ZDHHC9-GOLGA7 complex is a palmitoyltransferase specific for HRAS and NRAS.
Calculated Mw	16 kDa
PTM	Lipoprotein, Palmitate
Cellular Localization	Golgi apparatus, Membrane

Images



ARG44542 anti-GOLGA7 antibody IHC-P image

Immunohistochemistry: Human breast cancer stained with ARG44542 anti-GOLGA7 antibody.



ARG44542 anti-GOLGA7 antibody WB image

Western blot: Human plasma and Human placenta stained with ARG44542 anti-GOLGA7 antibody.