

ARG44539 anti-LTB antibody

Package: 100 µl
Store at: -20°C

Summary

Product Description	Rabbit Polyclonal antibody recognizes LTB
Tested Reactivity	Hu
Tested Application	IHC-P
Host	Rabbit
Clonality	Polyclonal
Isotype	IgG
Target Name	LTB
Species	Human
Immunogen	Synthetic peptide from Human
Conjugation	Un-conjugated
Alternate Names	LTB; Lymphotoxin Beta; TNFSF3; TNFC; P33; Tumor Necrosis Factor Ligand Superfamily Member 3; TNF Superfamily Member 3; Necrosis Factor C; Lymphotoxin-Beta; LT-Beta; TNF-C

Application Instructions

Application table	Application	Dilution
	IHC-P	1:50-1:100
Application Note	* The dilutions indicate recommended starting dilutions and the optimal dilutions or concentrations should be determined by the scientist.	

Properties

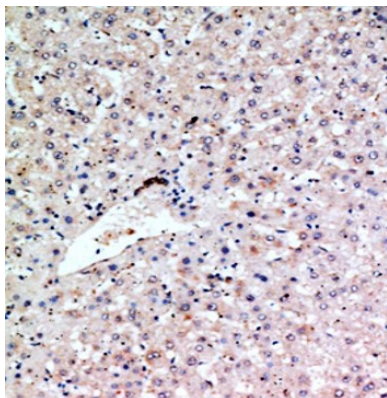
Form	Liquid
Purification	Affinity purified.
Buffer	PBS (pH 7.4), 0.05% Sodium azide and 40% Glycerol.
Preservative	0.05% Sodium azide
Stabilizer	40% Glycerol
Storage instruction	For continuous use, store undiluted antibody at 2-8°C for up to a week. For long-term storage, aliquot and store at -20°C. Storage in frost free freezers is not recommended. Avoid repeated freeze/thaw cycles. Suggest spin the vial prior to opening. The antibody solution should be gently mixed before use.
Note	For laboratory research only, not for drug, diagnostic or other use.

Bioinformation

Gene Symbol	LTB
-------------	-----

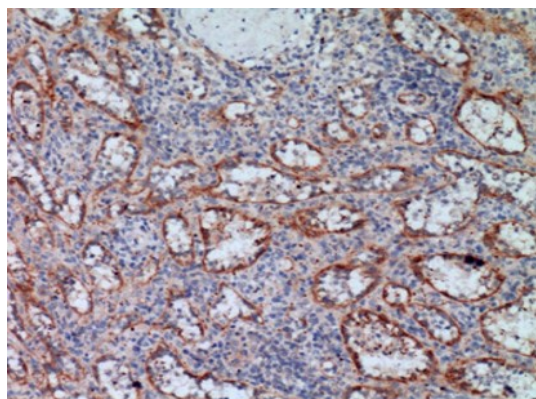
Gene Full Name	Lymphotoxin Beta
Background	Lymphotoxin beta is a type II membrane protein of the TNF family. It anchors lymphotoxin-alpha to the cell surface through heterotrimer formation. The predominant form on the lymphocyte surface is the lymphotoxin-alpha 1/beta 2 complex (e.g. 1 molecule alpha/2 molecules beta) and this complex is the primary ligand for the lymphotoxin-beta receptor. The minor complex is lymphotoxin-alpha 2/beta 1. LTB is an inducer of the inflammatory response system and involved in normal development of lymphoid tissue. Lymphotoxin-beta isoform b is unable to complex with lymphotoxin-alpha suggesting a function for lymphotoxin-beta which is independent of lymphotoxin-alpha. Alternative splicing results in multiple transcript variants encoding different isoforms.
Function	Cytokine that binds to LTBR/TNFRSF3. May play a specific role in immune response regulation. Provides the membrane anchor for the attachment of the heterotrimeric complex to the cell surface. Isoform 2 is probably non-functional.
Calculated Mw	25 kDa
Cellular Localization	Membrane

Images



ARG44539 anti-LTB antibody IHC-P image

Immunohistochemistry: Human liver stained with ARG44539 anti-LTB antibody.



ARG44539 anti-LTB antibody IHC-P image

Immunohistochemistry: Human tonsils stained with ARG44539 anti-LTB antibody.
