

## ARG44509 anti-Intersectin 1 antibody

Package: 50 µg  
Store at: -20°C

### Summary

Product Description	Rabbit Polyclonal antibody recognizes Intersectin 1
Tested Reactivity	Hu
Tested Application	FACS, ICC/IF, WB
Host	Rabbit
Clonality	Polyclonal
Target Name	Intersectin 1
Species	Human
Immunogen	Human Intersectin 1 recombinant protein
Conjugation	Un-conjugated
Alternate Names	ITSN1; Intersectin 1; SH3P17; SH3D1A; ITSN; Human Intersectin-SH3 Domain-Containing Protein SH3P17; Src Homology 3 Domain-Containing Protein; Intersectin 1 (SH3 Domain Protein); SH3 Domain-Containing Protein 1A; Intersectin-1

### Application Instructions

Application table	Application	Dilution
	FACS	1-3 µg/10 <sup>6</sup> cells
	ICC/IF	5 µg/ml
	WB	0.25-0.5 µg/ml
Application Note	The dilutions indicate recommended starting dilutions and the optimal dilutions or concentrations should be determined by the scientist.	

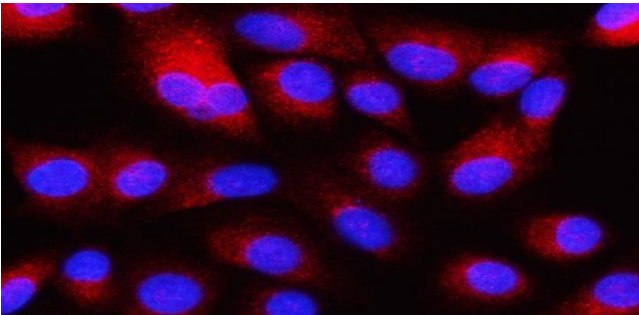
### Properties

Form	Liquid
Purification	Affinity purification with immunogen.
Buffer	0.9% NaCl, 0.2% Na <sub>2</sub> HPO <sub>4</sub> , 0.05% Sodium azide and 4% Trehalose.
Preservative	0.05% Sodium azide
Stabilizer	4% Trehalose
Concentration	0.5 mg/ml
Storage instruction	For continuous use, store undiluted antibody at 2-8°C for up to a week. For long-term storage, aliquot and store at -20°C or below. Storage in frost free freezers is not recommended. Avoid repeated freeze/thaw cycles. Suggest spin the vial prior to opening. The antibody solution should be gently mixed before use.

## Bioinformation

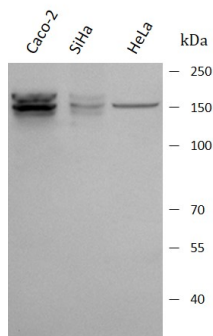
Gene Symbol	ITSN1
Gene Full Name	Intersectin 1
Background	The protein encoded by this gene is a cytoplasmic membrane-associated protein that indirectly coordinates endocytic membrane traffic with the actin assembly machinery. In addition, the encoded protein may regulate the formation of clathrin-coated vesicles and could be involved in synaptic vesicle recycling. This protein has been shown to interact with dynamin, CDC42, SNAP23, SNAP25, SPIN90, EPS15, EPN1, EPN2, and STN2. Multiple transcript variants encoding different isoforms have been found for this gene, but the full-length nature of only two of them have been characterized so far.
Function	Adapter protein that provides a link between the endocytic membrane traffic and the actin assembly machinery.
Calculated Mw	195 kDa
PTM	Phosphoprotein
Cellular Localization	Cell membrane, Cell projection, Coated pit, Cytoplasm, Cytoplasmic vesicle, Endosome, Membrane, Nucleus, Synapse, Synaptosome

## Images



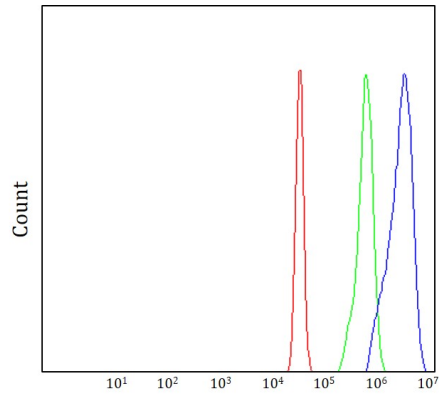
ARG44509 anti-Intersectin 1 antibody ICC/IF image

Immunofluorescence: A549 stained with ARG44509 anti-Intersectin 1 antibody at 5  $\mu\text{g}/\text{mL}$  dilution.



ARG44509 anti-Intersectin 1 antibody WB image

Western blot: Caco-2, SiHa and HeLa stained with ARG44509 anti-Intersectin 1 antibody at 0.5  $\mu\text{g}/\text{mL}$  dilution.



ARG44509 anti-Intersectin 1 antibody FACS image

Flow Cytometry: SiHa stained with ARG44509 anti-Intersectin 1 antibody at 1 µg/10<sup>6</sup> cells dilution.