

ARG44498 anti-HDGFL2 antibody

Package: 50 µg
Store at: -20°C

Summary

Product Description	Rabbit Polyclonal antibody recognizes HDGFL2
Tested Reactivity	Hu
Tested Application	FACS, ICC/IF, WB
Host	Rabbit
Clonality	Polyclonal
Target Name	HDGFL2
Species	Human
Immunogen	Human HDGFL2 recombinant protein
Conjugation	Un-conjugated
Alternate Names	HDGFL2; HDGF Like 2; HRP2; Hdgrfp2; Hepatoma-Derived Growth Factor-Related Protein 2; HDGF-Related Protein 2; HDGF-2; HDGF2; HRP-2; Hepatoma-Derived Growth Factor Related Protein 2; Hepatoma-Derived Growth Factor 2; HDGFRP2

Application Instructions

Application table	Application	Dilution
	FACS	1-3 µg/10 ⁶ cells
	ICC/IF	5 µg/ml
	WB	0.1-0.25 µg/ml
Application Note	The dilutions indicate recommended starting dilutions and the optimal dilutions or concentrations should be determined by the scientist.	

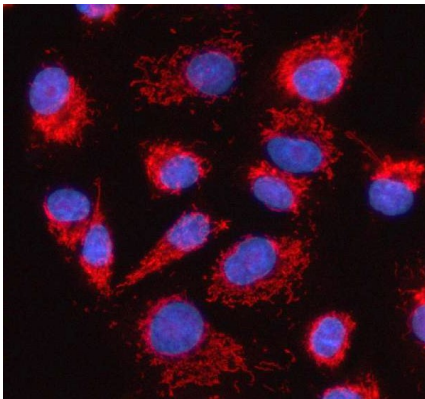
Properties

Form	Liquid
Purification	Affinity purification with immunogen.
Buffer	0.9% NaCl, 0.2% Na ₂ HPO ₄ , 0.05% Sodium azide and 4% Trehalose.
Preservative	0.05% Sodium azide
Stabilizer	4% Trehalose
Concentration	0.5 mg/ml
Storage instruction	For continuous use, store undiluted antibody at 2-8°C for up to a week. For long-term storage, aliquot and store at -20°C or below. Storage in frost free freezers is not recommended. Avoid repeated freeze/thaw cycles. Suggest spin the vial prior to opening. The antibody solution should be gently mixed before use.

Bioinformation

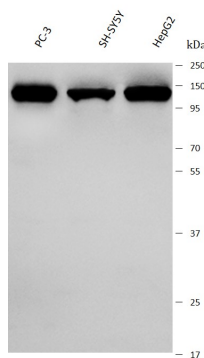
Gene Symbol	HDGFL2
Gene Full Name	HDGF Like 2
Background	This gene encodes a member of the hepatoma-derived growth factor (HDGF) family. The protein includes an N-terminal PWWP domain that binds to methyl-lysine-containing histones, with specific binding of this protein to tri-methylated lysines 36 and 79 of histone H3, and di- and tri-methylated lysine 20 of histone H4. The protein functions in LEDGF/p75-independent HIV-1 replication by determining HIV-1 integration site selection. Alternative splicing of this gene results in multiple transcript variants.
Function	Acts as an epigenetic regulator of myogenesis in cooperation with DPF3a (isoform 2 of DPF3/BAF45C).
Calculated Mw	74 kDa
PTM	Isopeptide bond, Phosphoprotein, Ubl conjugation
Cellular Localization	Cytoplasm, Nucleus

Images



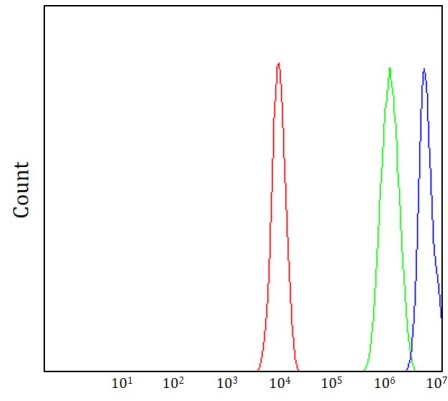
ARG44498 anti-HDGFL2 antibody ICC/IF image

Immunofluorescence: A549 stained with ARG44498 anti-HDGFL2 antibody at 5 μ g/mL dilution.



ARG44498 anti-HDGFL2 antibody WB image

Western blot: PC-3, SH-SY5Y and HepG2 stained with ARG44498 anti-HDGFL2 antibody at 0.5 μ g/mL dilution.



ARG44498 anti-HDGFL2 antibody FACS image

Flow Cytometry: PC-3 stained with ARG44498 anti-HDGFL2 antibody at 1 µg/10⁶ cells dilution.