

ARG44490 anti-HSDL2 antibody

Package: 50 µg
Store at: -20°C

Summary

Product Description	Rabbit Polyclonal antibody recognizes HSDL2
Tested Reactivity	Hu, Ms, Rat
Tested Application	FACS, ICC/IF, IHC-P, WB
Host	Rabbit
Clonality	Polyclonal
Target Name	HSDL2
Species	Human
Immunogen	Human HSDL2 recombinant protein
Conjugation	Un-conjugated
Alternate Names	HSDL2; Hydroxysteroid Dehydrogenase Like 2; SDR13C1; C9orf99; Short Chain Dehydrogenase/Reductase Family 13C Member 1; Hydroxysteroid Dehydrogenase-Like Protein 2; Short Chain Dehydrogenase/Reductase Family 13C, Member 1; Chromosome 9 Open Reading Frame 99

Application Instructions

Application table	Application	Dilution
	FACS	1-3 µg/1x10 ⁶
	ICC/IF	5 µg/ml
	IHC-P	2-5 µg/ml
	WB	0.25-0.5 µg/ml

Application Note The dilutions indicate recommended starting dilutions and the optimal dilutions or concentrations should be determined by the scientist.

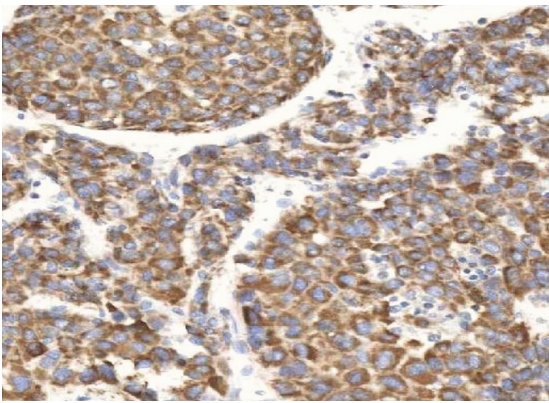
Properties

Form	Liquid
Purification	Affinity purification with immunogen.
Buffer	0.9% NaCl, 0.2% Na ₂ HPO ₄ , 0.05% Sodium azide and 4% Trehalose.
Preservative	0.05% Sodium azide
Stabilizer	4% Trehalose
Concentration	0.5 mg/ml
Storage instruction	For continuous use, store undiluted antibody at 2-8°C for up to a week. For long-term storage, aliquot and store at -20°C or below. Storage in frost free freezers is not recommended. Avoid repeated freeze/thaw cycles. Suggest spin the vial prior to opening. The antibody solution should be gently mixed before use.

Bioinformation

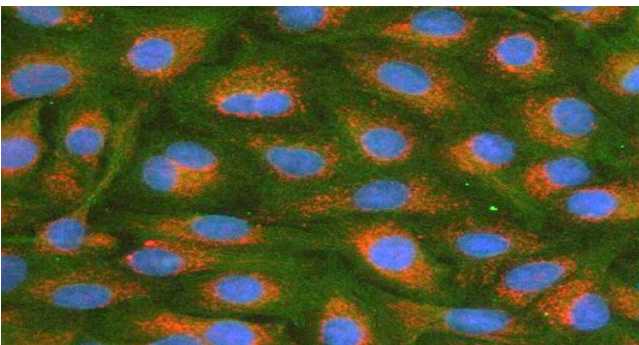
Gene Symbol	HSDL2
Gene Full Name	Hydroxysteroid Dehydrogenase Like 2
Background	Predicted to enable oxidoreductase activity. Located in mitochondrion and peroxisome.
Function	Has apparently no steroid dehydrogenase activity.
Calculated Mw	45 kDa
PTM	Acetylation, Hydroxylation
Cellular Localization	Peroxisome

Images



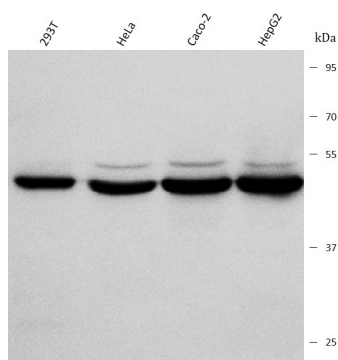
ARG44490 anti-HSDL2 antibody IHC-P image

Immunohistochemistry: Human liver cancer stained with ARG44490 anti-HSDL2 antibody at 2 $\mu\text{g}/\text{mL}$ dilution.



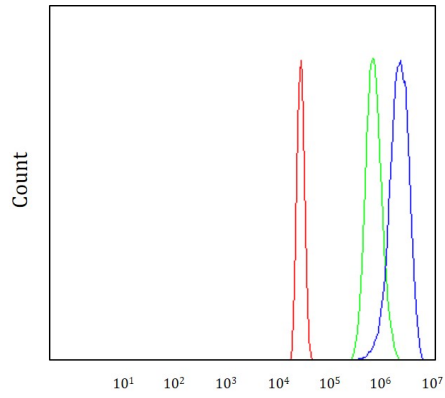
ARG44490 anti-HSDL2 antibody ICC/IF image

Immunofluorescence: A549 stained with ARG44490 anti-HSDL2 antibody at 5 $\mu\text{g}/\text{mL}$ dilution.



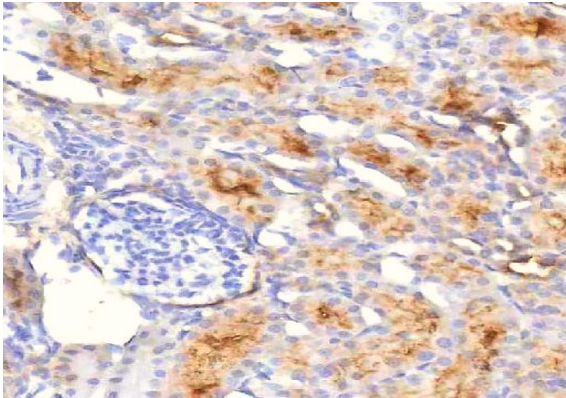
ARG44490 anti-HSDL2 antibody WB image

Western blot: 293T, HeLa, Caco-2 and HepG2 stained with ARG44490 anti-HSDL2 antibody at 0.5 $\mu\text{g}/\text{mL}$ dilution.



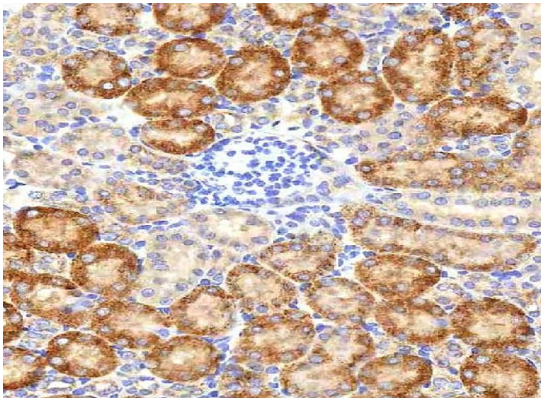
ARG44490 anti-HSDL2 antibody FACS image

Flow Cytometry: HepG2 stained with ARG44490 anti-HSDL2 antibody at 1 µg/10⁶ cells dilution.



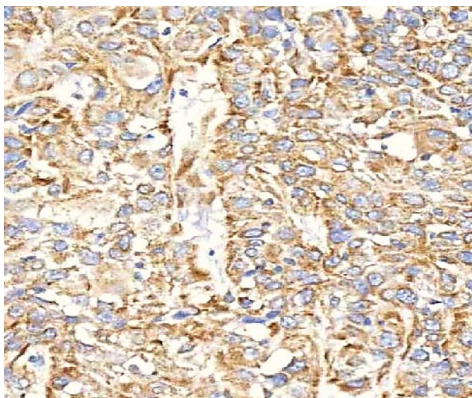
ARG44490 anti-HSDL2 antibody IHC-P image

Immunohistochemistry: Rat kidney stained with ARG44490 anti-HSDL2 antibody at 2 µg/mL dilution.



ARG44490 anti-HSDL2 antibody IHC-P image

Immunohistochemistry: Mouse kidney stained with ARG44490 anti-HSDL2 antibody at 2 µg/mL dilution.



ARG44490 anti-HSDL2 antibody IHC-P image

Immunohistochemistry: Human urothelial carcinoma stained with ARG44490 anti-HSDL2 antibody at 2 µg/mL dilution.