

## ARG44483 anti-INTU antibody

Package: 50 µg  
Store at: -20°C

### Summary

Product Description	Rabbit Polyclonal antibody recognizes INTU
Tested Reactivity	Hu
Tested Application	FACS, IHC-P, WB
Host	Rabbit
Clonality	Polyclonal
Target Name	INTU
Species	Human
Immunogen	Human INTU recombinant protein
Conjugation	Un-conjugated
Alternate Names	INTU; Inturned Planar Cell Polarity Protein; KIAA1284; CPLANE4; PDZD6; PDZK6; Ciliogenesis And Planar Polarity Effector Complex Subunit 4; Inturned Planar Cell Polarity Effector Homolog; PDZ Domain-Containing Protein 6; PDZ Domain Containing 6; Protein Inturned; Inturned Planar Cell Polarity Effector Homolog (Drosophila); Ciliogenesis And Planar Polarity Effector 4; SRTD20; OFD17; INT

### Application Instructions

Application table	Application	Dilution
	FACS	1-3 µg/1x10 <sup>6</sup>
	IHC-P	2-5 µg/ml
	WB	0.25-0.5 µg/ml
Application Note	The dilutions indicate recommended starting dilutions and the optimal dilutions or concentrations should be determined by the scientist.	

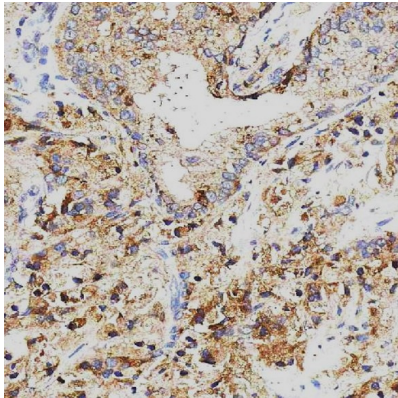
### Properties

Form	Liquid
Purification	Affinity purification with immunogen.
Buffer	0.9% NaCl, 0.2% Na <sub>2</sub> HPO <sub>4</sub> , 0.05% Sodium azide and 4% Trehalose.
Preservative	0.05% Sodium azide
Stabilizer	4% Trehalose
Concentration	0.5 mg/ml
Storage instruction	For continuous use, store undiluted antibody at 2-8°C for up to a week. For long-term storage, aliquot and store at -20°C or below. Storage in frost free freezers is not recommended. Avoid repeated freeze/thaw cycles. Suggest spin the vial prior to opening. The antibody solution should be gently mixed before use.

## Bioinformation

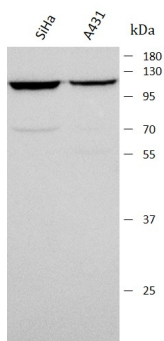
Gene Symbol	INTU
Gene Full Name	Inturned Planar Cell Polarity Protein
Background	Involved in embryonic digit morphogenesis; roof of mouth development; and tongue morphogenesis. Located in ciliary basal body and motile cilium. Implicated in asphyxiating thoracic dystrophy and orofacioidigital syndrome XVII.
Function	Plays a key role in ciliogenesis and embryonic development. Regulator of cilia formation by controlling the organization of the apical actin cytoskeleton and the positioning of the basal bodies at the apical cell surface, which in turn is essential for the normal orientation of elongating ciliary microtubules. Plays a key role in definition of cell polarity via its role in ciliogenesis but not via conversion extension. Has an indirect effect on hedgehog signaling.
Calculated Mw	106 kDa
PTM	Phosphoprotein
Cellular Localization	Cell projection, Cytoplasm, Cytoskeleton

## Images



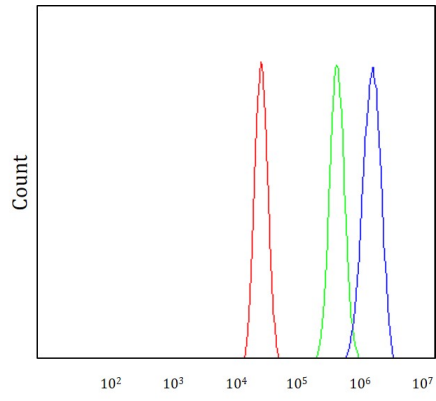
ARG44483 anti-INTU antibody IHC-P image

Immunohistochemistry: Human prostate cancer stained with ARG44483 anti-INTU antibody at 2  $\mu\text{g}/\text{mL}$  dilution.



ARG44483 anti-INTU antibody WB image

Western blot: SiHa and A431 stained with ARG44483 anti-INTU antibody at 0.5  $\mu\text{g}/\text{mL}$  dilution.



### ARG44483 anti-INTU antibody FACS image

Flow Cytometry: MCF-7 stained with ARG44483 anti-INTU antibody at  $1 \mu\text{g}/10^6$  cells dilution.