

## ARG44480 anti-INTS12 antibody

Package: 50 µg  
Store at: -20°C

### Summary

Product Description	Rabbit Polyclonal antibody recognizes INTS12
Tested Reactivity	Hu, Ms, Rat
Tested Application	FACS, WB
Host	Rabbit
Clonality	Polyclonal
Target Name	INTS12
Species	Human
Immunogen	Human INTS12 recombinant protein
Conjugation	Un-conjugated
Alternate Names	INTS12; Integrator Complex Subunit 12; PHD Finger Protein 22; SBBI22; INT12; PHF22; Hypothetical Nuclear Factor SBBI22; Int12

### Application Instructions

Application table	Application	Dilution
	FACS	1-3 µg/1x10 <sup>6</sup>
	WB	0.25-0.5 µg/ml
Application Note	The dilutions indicate recommended starting dilutions and the optimal dilutions or concentrations should be determined by the scientist.	

### Properties

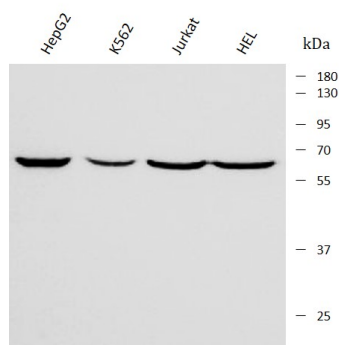
Form	Liquid
Purification	Affinity purification with immunogen.
Buffer	0.9% NaCl, 0.2% Na <sub>2</sub> HPO <sub>4</sub> , 0.05% Sodium azide and 4% Trehalose.
Preservative	0.05% Sodium azide
Stabilizer	4% Trehalose
Concentration	0.5 mg/ml
Storage instruction	For continuous use, store undiluted antibody at 2-8°C for up to a week. For long-term storage, aliquot and store at -20°C or below. Storage in frost free freezers is not recommended. Avoid repeated freeze/thaw cycles. Suggest spin the vial prior to opening. The antibody solution should be gently mixed before use.

### Bioinformation

Gene Symbol	INTS12
Gene Full Name	Integrator Complex Subunit 12
Background	INTS12 is a subunit of the Integrator complex, which associates with the C-terminal domain of RNA polymerase II large subunit (POLR2A; MIM 180660) and mediates 3-prime end processing of small nuclear RNAs U1 (RNU1; MIM 180680) and U2.
Function	Component of the Integrator complex, a complex involved in the small nuclear RNAs (snRNA) U1 and U2 transcription and in their 3'-box-dependent processing. The Integrator complex is associated with the C-terminal domain (CTD) of RNA polymerase II largest subunit (POLR2A) and is recruited to the U1 and U2 snRNAs genes.
Calculated Mw	49 kDa
PTM	Isopeptide bond, Phosphoprotein, Ubl conjugation
Cellular Localization	Nucleus

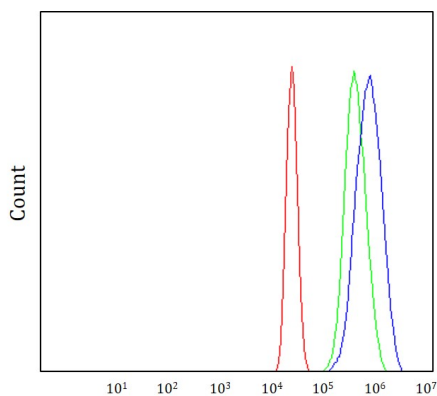
## Images

ARG44480 anti-INTS12 antibody WB image



Western blot: HepG2, K562, Jurkat and HEL stained with ARG44480 anti-INTS12 antibody at 0.5  $\mu\text{g}/\text{mL}$  dilution.

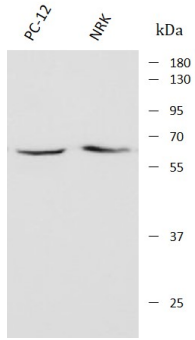
ARG44480 anti-INTS12 antibody FACS image



Flow Cytometry: MCF-7 stained with ARG44480 anti-INTS12 antibody at  $1 \mu\text{g}/10^6$  cells dilution.

ARG44480 anti-INTS12 antibody WB image

Western blot: PC-12 and NRK stained with ARG44480 anti-INTS12 antibody at 0.5  $\mu\text{g}/\text{mL}$  dilution.



ARG44480 anti-INTS12 antibody WB image

Western blot: RAW264.7 and SP2/O stained with ARG44480 anti-INTS12 antibody at 0.5  $\mu\text{g}/\text{mL}$  dilution.

