

## ARG44474 anti-LMF2 antibody

Package: 50 µg  
Store at: -20°C

### Summary

Product Description	Rabbit Polyclonal antibody recognizes LMF2
Tested Reactivity	Hu
Tested Application	WB
Host	Rabbit
Clonality	Polyclonal
Target Name	LMF2
Species	Human
Immunogen	Human LMF2 recombinant protein
Conjugation	Un-conjugated
Alternate Names	LMF2; Lipase Maturation Factor 2; Transmembrane Protein 112B; Transmembrane Protein 153; TMEM112B; TMEM153

### Application Instructions

Application table	Application	Dilution
	WB	0.25-0.5 µg/ml

**Application Note** The dilutions indicate recommended starting dilutions and the optimal dilutions or concentrations should be determined by the scientist.

### Properties

Form	Liquid
Purification	Affinity purification with immunogen.
Buffer	0.9% NaCl, 0.2% Na <sub>2</sub> HPO <sub>4</sub> , 0.05% Sodium azide and 4% Trehalose.
Preservative	0.05% Sodium azide
Stabilizer	4% Trehalose
Concentration	0.5 mg/ml
Storage instruction	For continuous use, store undiluted antibody at 2-8°C for up to a week. For long-term storage, aliquot and store at -20°C or below. Storage in frost free freezers is not recommended. Avoid repeated freeze/thaw cycles. Suggest spin the vial prior to opening. The antibody solution should be gently mixed before use.

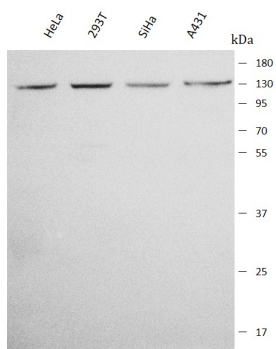
### Bioinformation

Gene Symbol	LMF2
-------------	------

Gene Full Name	Lipase Maturation Factor 2
Background	Predicted to be involved in protein maturation. Located in membrane.
Function	Involved in the maturation of specific proteins in the endoplasmic reticulum. May be required for maturation and transport of active lipoprotein lipase (LPL) through the secretory pathway.
Calculated Mw	80 kDa
PTM	Glycoprotein
Cellular Localization	Endoplasmic reticulum, Membrane

## Images

---



ARG44474 anti-LMF2 antibody WB image

Western blot: HeLa , 293T, SiHa and A431 stained with ARG44474 anti-LMF2 antibody at 0.5  $\mu\text{g}/\text{mL}$  dilution.