

ARG44430 anti-LUC7L antibody

Package: 50 µg
Store at: -20°C

Summary

Product Description	Rabbit Polyclonal antibody recognizes LUC7L
Tested Reactivity	Hu
Tested Application	WB
Host	Rabbit
Clonality	Polyclonal
Target Name	LUC7L
Species	Human
Immunogen	Human UC7L recombinant protein (aa. sequence: Q29-S340).
Conjugation	Un-conjugated
Alternate Names	LUC7L; LUC7 Like; HLuc7B1; LUC7B1; Luc7; Putative RNA-Binding Protein Luc7-Like 1; Putative SR Protein LUC7B1; SR+89; Sarcoplasmic Reticulum Protein LUC7B1

Application Instructions

Application table	Application	Dilution
	WB	0.25-0.5 µg/ml

Application Note The dilutions indicate recommended starting dilutions and the optimal dilutions or concentrations should be determined by the scientist.

Properties

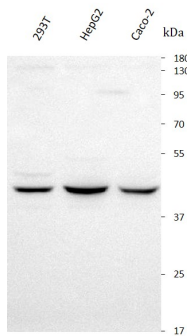
Form	Liquid
Purification	Affinity purification with immunogen.
Buffer	0.9% NaCl, 0.2% Na ₂ HPO ₄ , 0.05% Sodium azide and 4% Trehalose.
Preservative	0.05% Sodium azide
Stabilizer	4% Trehalose
Concentration	0.5 mg/ml
Storage instruction	For continuous use, store undiluted antibody at 2-8°C for up to a week. For long-term storage, aliquot and store at -20°C or below. Storage in frost free freezers is not recommended. Avoid repeated freeze/thaw cycles. Suggest spin the vial prior to opening. The antibody solution should be gently mixed before use.

Bioinformation

Gene Symbol	LUC7L
-------------	-------

Gene Full Name	LUC7 Like
Background	The LUC7L gene may represent a mammalian heterochromatic gene, encoding a putative RNA-binding protein similar to the yeast Luc7p subunit of the U1 snRNP splicing complex that is normally required for 5-prime splice site selection
Function	May bind to RNA via its Arg/Ser-rich domain.
Calculated Mw	44 kDa
PTM	Phosphoprotein

Images



ARG44430 anti-LUC7L antibody WB image

Western blot: 293T, HepG2 and Caco-2 stained with ARG44430 anti-LUC7L antibody at 0.5 $\mu\text{g}/\text{mL}$ dilution.