

ARG44424 anti-CROP antibody

Package: 50 µg
Store at: -20°C

Summary

Product Description	Rabbit Polyclonal antibody recognizes CROP
Tested Reactivity	Hu, Ms, Rat
Tested Application	FACS, ICC/IF, IHC-P, WB
Host	Rabbit
Clonality	Polyclonal
Target Name	CROP
Species	Human
Immunogen	Human CROP recombinant protein (aa. sequence: D30-H211).
Conjugation	Un-conjugated
Alternate Names	LUC7L3; LUC7 Like 3 Pre-mRNA Splicing Factor; CREAP-1; CROP; OA48-18; HLuc7A; LUC7A; CRA; Cisplatin Resistance-Associated-Overexpressed Protein; Okadaic Acid-Inducible Phosphoprotein OA48-18; CAMP Regulatory Element-Associated Protein 1; CRE-Associated Protein 1; Luc7-Like Protein 3

Application Instructions

Application table	Application	Dilution
	FACS	1-3 µg/1x10 ⁶ cells
	ICC/IF	5 µg/ml
	IHC-P	1-2 µg/ml
	WB	0.25-0.5 µg/ml

Application Note The dilutions indicate recommended starting dilutions and the optimal dilutions or concentrations should be determined by the scientist.

Properties

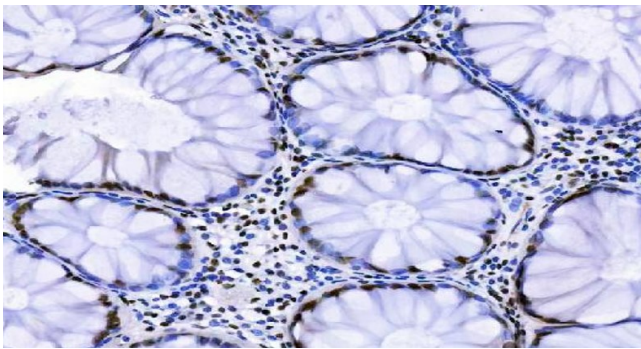
Form	Liquid
Purification	Affinity purification with immunogen.
Buffer	0.9% NaCl, 0.2% Na ₂ HPO ₄ , 0.05% Sodium azide and 4% Trehalose.
Preservative	0.05% Sodium azide
Stabilizer	4% Trehalose
Concentration	0.5 mg/ml
Storage instruction	For continuous use, store undiluted antibody at 2-8°C for up to a week. For long-term storage, aliquot and store at -20°C or below. Storage in frost free freezers is not recommended. Avoid repeated freeze/thaw cycles. Suggest spin the vial prior to opening. The antibody solution should be gently mixed

before use.

Bioinformation

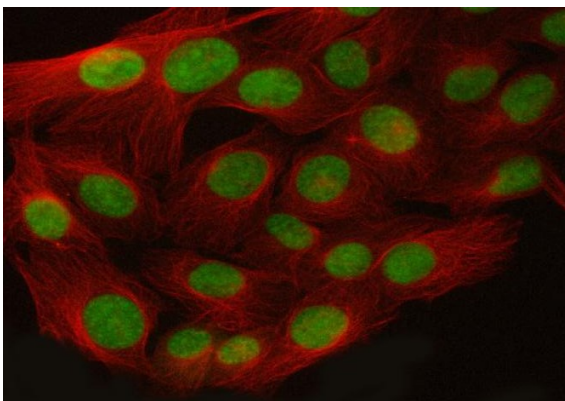
Gene Symbol	LUC7L3
Gene Full Name	LUC7 Like 3 Pre-mRNA Splicing Factor
Background	This gene encodes a protein with an N-terminal half that contains cysteine/histidine motifs and leucine zipper-like repeats, and the C-terminal half is rich in arginine and glutamate residues (RE domain) and arginine and serine residues (RS domain). This protein localizes with a speckled pattern in the nucleus, and could be involved in the formation of spliceosome via the RE and RS domains. Two alternatively spliced transcript variants encoding the same protein have been found for this gene.
Function	Binds cAMP regulatory element DNA sequence. May play a role in RNA splicing.
Calculated Mw	51 kDa
PTM	Acetylation, Isopeptide bond, Phosphoprotein, Ubl conjugation
Cellular Localization	Nucleus

Images



ARG44424 anti-CROP antibody IHC-P image

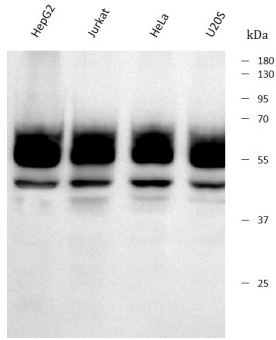
Immunohistochemistry: Human colon (highly differentiated adenocarcinoma) stained with ARG44424 anti-CROP antibody at 2 $\mu\text{g}/\text{mL}$ dilution.



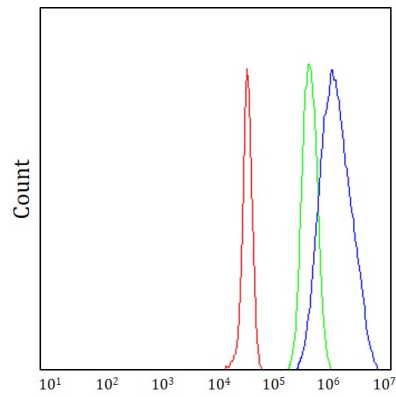
ARG44424 anti-CROP antibody ICC/IF image

Immunofluorescence: U2OS stained with ARG44424 anti-CROP antibody at 5 $\mu\text{g}/\text{mL}$ dilution.

ARG44424 anti-CROP antibody WB image

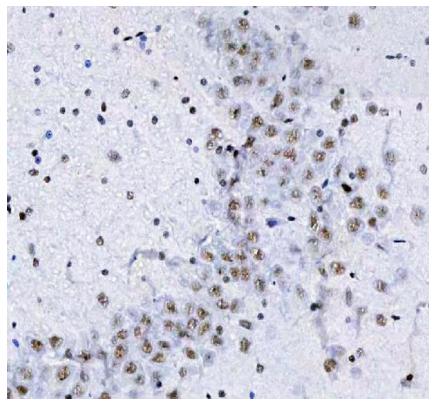


Western blot: HepG2, Jurkat, HeLa and U2OS stained with ARG44424 anti-CROP antibody at 0.5 $\mu\text{g}/\text{mL}$ dilution.



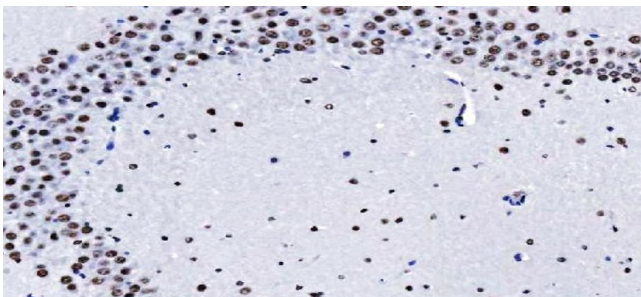
ARG44424 anti-CROP antibody FACS image

Flow Cytometry: JK stained with ARG44424 anti-CROP antibody at 1 $\mu\text{g}/10^6$ cells dilution.



ARG44424 anti-CROP antibody IHC-P image

Immunohistochemistry: Rat brain stained with ARG44424 anti-CROP antibody at 2 $\mu\text{g}/\text{mL}$ dilution.



ARG44424 anti-CROP antibody IHC-P image

Immunohistochemistry: Mouse brain stained with ARG44424 anti-CROP antibody at 2 $\mu\text{g}/\text{mL}$ dilution.