

ARG44413 anti-LRIT3 antibody

Package: 50 µg
Store at: -20°C

Summary

| | |
|---------------------|---|
| Product Description | Rabbit Polyclonal antibody recognizes LRIT3 |
| Tested Reactivity | Hu, Ms, Rat |
| Tested Application | ICC/IF, WB |
| Host | Rabbit |
| Clonality | Polyclonal |
| Target Name | LRIT3 |
| Species | Human |
| Immunogen | Human LRIT3 recombinant protein (aa. sequence: E50-R573). |
| Conjugation | Un-conjugated |
| Alternate Names | LRIT3; Leucine Rich Repeat, Ig-Like And Transmembrane Domains 3; FIGLER4; CSNB1F; Leucine-Rich Repeat, Immunoglobulin-Like Domain And Transmembrane Domain-Containing Protein 3; Fibronectin Type III, Immunoglobulin And Leucine Rich Repeat Domains 4 |

Application Instructions

| Application table | Application | Dilution |
|-------------------|--|----------------|
| | ICC/IF | 5 µg/ml |
| | WB | 0.25-0.5 µg/ml |
| Application Note | The dilutions indicate recommended starting dilutions and the optimal dilutions or concentrations should be determined by the scientist. | |

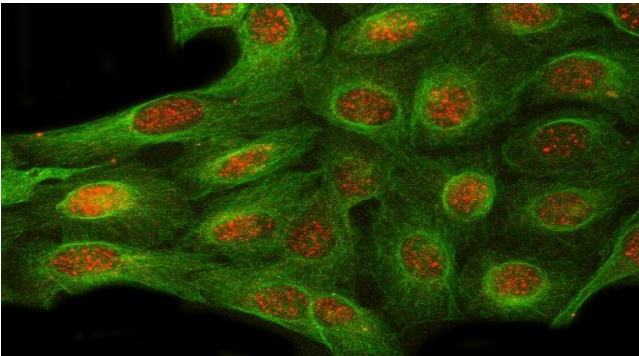
Properties

| | |
|---------------------|--|
| Form | Liquid |
| Purification | Affinity purification with immunogen. |
| Buffer | 0.9% NaCl, 0.2% Na ₂ HPO ₄ , 0.05% Sodium azide and 4% Trehalose. |
| Preservative | 0.05% Sodium azide |
| Stabilizer | 4% Trehalose |
| Concentration | 0.5 mg/ml |
| Storage instruction | For continuous use, store undiluted antibody at 2-8°C for up to a week. For long-term storage, aliquot and store at -20°C or below. Storage in frost free freezers is not recommended. Avoid repeated freeze/thaw cycles. Suggest spin the vial prior to opening. The antibody solution should be gently mixed before use. |

Bioinformation

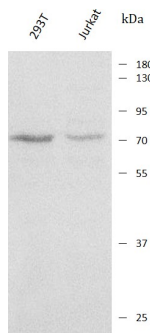
| | |
|-----------------------|---|
| Gene Symbol | LRIT3 |
| Gene Full Name | Leucine Rich Repeat, Ig-Like And Transmembrane Domains 3 |
| Background | This gene encodes a protein that has a fibronectin type III domain and a C-terminal transmembrane domain, as well as a leucine-rich repeat domain and immunoglobulin-like domain near the N-terminus. The encoded protein may regulate fibroblast growth factor receptors and affect the modification of these receptors, which are glycosylated differently in the Golgi and endoplasmic reticulum. Mutations in this gene are associated with congenital stationary night blindness, type 1F. |
| Function | Plays a role in the synapse formation and synaptic transmission between cone photoreceptor cells and retinal bipolar cells. |
| Calculated Mw | 75 kDa |
| PTM | Disulfide bond, Glycoprotein |
| Cellular Localization | Cell projection, Endoplasmic reticulum, Membrane |

Images



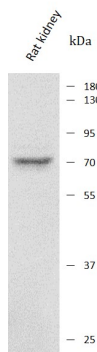
ARG44413 anti-LRIT3 antibody ICC/IF image

Immunofluorescence: U2OS stained with ARG44413 anti-LRIT3 antibody at 5 µg/mL dilution.



ARG44413 anti-LRIT3 antibody WB image

Western blot: 293T and Jurkat stained with ARG44413 anti-LRIT3 antibody at 0.5 µg/mL dilution.



ARG44413 anti-LRIT3 antibody WB image

Western blot: Rat kidney stained with ARG44413 anti-LRIT3 antibody at 0.5 µg/mL dilution.

ARG44413 anti-LRIT3 antibody WB image

Western blot: Mouse kidney stained with ARG44413 anti-LRIT3 antibody at 0.5 $\mu\text{g}/\text{mL}$ dilution.

