

## ARG44406 anti-LPCAT2 antibody

Package: 50 µg  
Store at: -20°C

### Summary

Product Description	Rabbit Polyclonal antibody recognizes LPCAT2
Tested Reactivity	Hu, Ms, Rat
Tested Application	FACS, IHC-P, WB
Host	Rabbit
Clonality	Polyclonal
Target Name	LPCAT2
Species	Human
Immunogen	Human LPCAT2 recombinant protein (aa. sequence: Q108-H510).
Conjugation	Un-conjugated
Alternate Names	LPCAT2; Lysophosphatidylcholine Acyltransferase 2; LysoPAFAT; AGPAT11; LPLAT9; AYTL1; Acetyl-CoA:Lyso-Platelet-Activating; Factor Acetyltransferase

### Application Instructions

Application table	Application	Dilution
	FACS	1-3 µg/1x10 <sup>6</sup> cells
	IHC-P	2-5 µg/ml
	WB	0.1-0.25 µg/ml

**Application Note** The dilutions indicate recommended starting dilutions and the optimal dilutions or concentrations should be determined by the scientist.

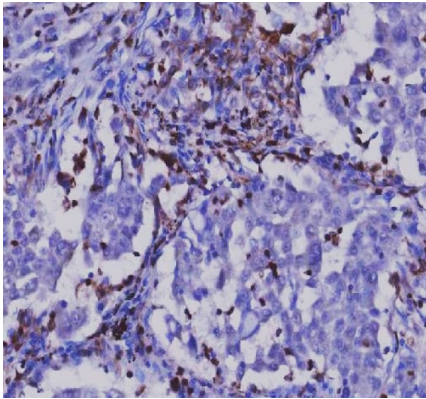
### Properties

Form	Liquid
Purification	Affinity purification with immunogen.
Buffer	0.9% NaCl, 0.2% Na <sub>2</sub> HPO <sub>4</sub> , 0.05% Sodium azide and 4% Trehalose.
Preservative	0.05% Sodium azide
Stabilizer	4% Trehalose
Concentration	0.5 mg/ml
Storage instruction	For continuous use, store undiluted antibody at 2-8°C for up to a week. For long-term storage, aliquot and store at -20°C or below. Storage in frost free freezers is not recommended. Avoid repeated freeze/thaw cycles. Suggest spin the vial prior to opening. The antibody solution should be gently mixed before use.

## Bioinformation

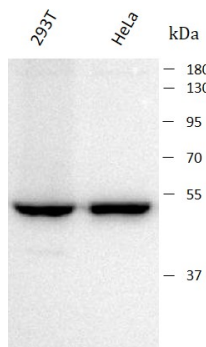
Gene Symbol	LPCAT2
Gene Full Name	Lysophosphatidylcholine Acyltransferase 2
Background	This gene encodes a member of the lysophospholipid acyltransferase family. The encoded enzyme may function in two ways: to catalyze the biosynthesis of platelet-activating factor (1-O-alkyl-2-acetyl-sn-glycero-3-phosphocholine) from 1-O-alkyl-sn-glycero-3-phosphocholine, and to catalyze the synthesis of glycerophospholipid precursors from arachidonyl-CoA and lysophosphatidylcholine. The encoded protein may function in membrane biogenesis and production of platelet-activating factor in inflammatory cells. The enzyme may localize to the endoplasmic reticulum and the Golgi.
Function	Exhibits both acyltransferase and acetyltransferase activities.
Calculated Mw	60 kDa
Cellular Localization	Cell membrane, Endoplasmic reticulum, Golgi apparatus, Lipid droplet, Membrane

## Images



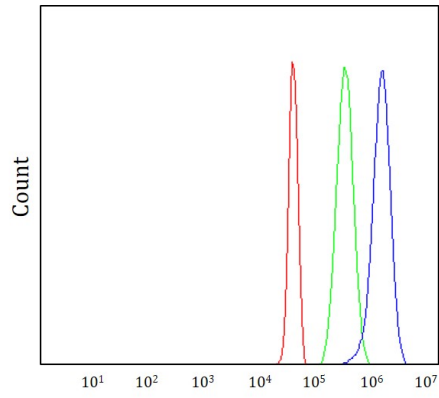
ARG44406 anti-LPCAT2 antibody IHC-P image

Immunohistochemistry: Human lung cancer stained with ARG44406 anti-LPCAT2 antibody at 2 µg/mL dilution.



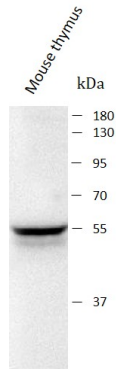
ARG44406 anti-LPCAT2 antibody WB image

Western blot: 293T and HeLa stained with ARG44406 anti-LPCAT2 antibody at 0.5 µg/mL dilution.



#### ARG44406 anti-LPCAT2 antibody FACS image

Flow Cytometry: JK stained with ARG44406 anti-LPCAT2 antibody at  $1 \mu\text{g}/10^6$  cells dilution.



#### ARG44406 anti-LPCAT2 antibody WB image

Western blot: Mouse thymus stained with ARG44406 anti-LPCAT2 antibody at  $0.5 \mu\text{g}/\text{mL}$  dilution.