

ARG44401 anti-LGI4 antibody

Package: 50 µg
Store at: -20°C

Summary

Product Description	Rabbit Polyclonal antibody recognizes LGI4
Tested Reactivity	Hu, Ms, Rat
Tested Application	FACS, ICC/IF, IHC-P, WB
Host	Rabbit
Clonality	Polyclonal
Target Name	LGI4
Species	Human
Immunogen	Human LGI4 recombinant protein (aa. sequence: E225-H531).
Conjugation	Un-conjugated
Alternate Names	LGI4; Leucine Rich Repeat LGI Family Member 4; Leucine-Rich Glioma-Inactivated Protein 4; Leucine-Rich Repeat LGI Family Member 4; LGI1-Like Protein 3; LGIL3

Application Instructions

Application table	Application	Dilution
	FACS	1-3 µg/1x10 ⁶ cells
	ICC/IF	5 µg/ml
	IHC-P	2-5 µg/ml
	WB	0.25-0.5 µg/ml

Application Note The dilutions indicate recommended starting dilutions and the optimal dilutions or concentrations should be determined by the scientist.

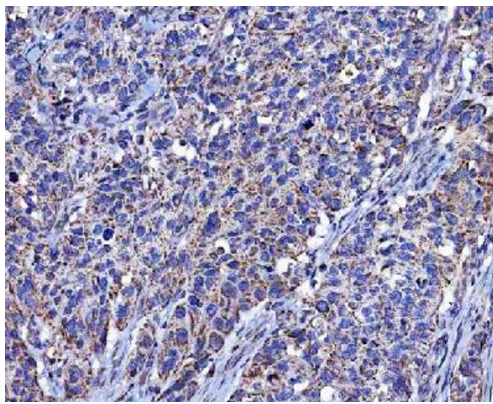
Properties

Form	Liquid
Purification	Affinity purification with immunogen.
Buffer	0.9% NaCl, 0.2% Na ₂ HPO ₄ , 0.05% Sodium azide and 4% Trehalose.
Preservative	0.05% Sodium azide
Stabilizer	4% Trehalose
Concentration	0.5 mg/ml
Storage instruction	For continuous use, store undiluted antibody at 2-8°C for up to a week. For long-term storage, aliquot and store at -20°C or below. Storage in frost free freezers is not recommended. Avoid repeated freeze/thaw cycles. Suggest spin the vial prior to opening. The antibody solution should be gently mixed before use.

Bioinformation

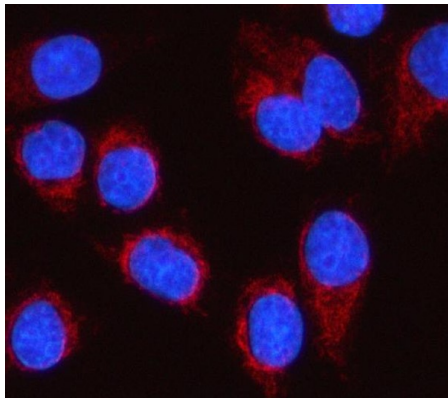
Gene Symbol	LGI4
Gene Full Name	Leucine Rich Repeat LGI Family Member 4
Background	Involved in regulation of myelination. Predicted to be located in extracellular region. Predicted to be active in extracellular space. Implicated in arthrogryposis multiplex congenita-1 and childhood absence epilepsy.
Function	Component of Schwann cell signaling pathway(s) that controls axon segregation and myelin formation.
Calculated Mw	59 kDa
PTM	Glycoprotein
Cellular Localization	Secreted

Images



ARG44401 anti-LGI4 antibody IHC-P image

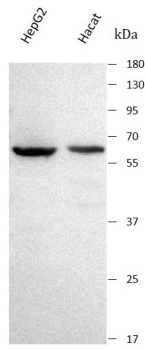
Immunohistochemistry: Human bladder urothelial carcinoma stained with ARG44401 anti-LGI4 antibody at 2 μ g/mL dilution.



ARG44401 anti-LGI4 antibody ICC/IF image

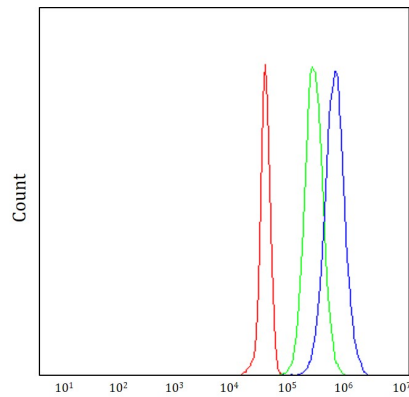
Immunofluorescence: SiHa stained with ARG44401 anti-LGI4 antibody at 5 μ g/mL dilution.

ARG44401 anti-LGI4 antibody WB image



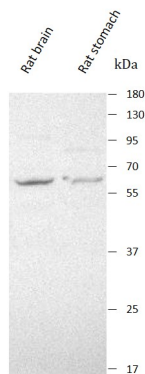
Western blot: HepG2 and Hacat stained with ARG44401 anti-LGI4 antibody at 0.5 $\mu\text{g}/\text{mL}$ dilution.

ARG44401 anti-LGI4 antibody FACS image



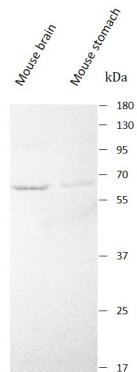
Flow Cytometry: JK stained with ARG44401 anti-LGI4 antibody at 1 $\mu\text{g}/10^6$ cells dilution.

ARG44401 anti-LGI4 antibody WB image

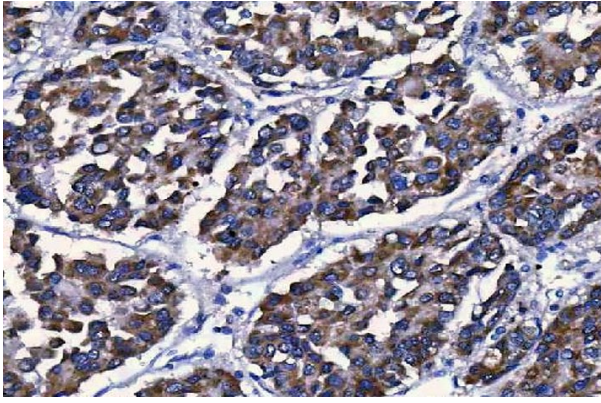


Western blot: Rat brain and Rat stomach stained with ARG44401 anti-LGI4 antibody at 0.5 $\mu\text{g}/\text{mL}$ dilution.

ARG44401 anti-LGI4 antibody WB image



Western blot: Mouse brain and Mouse stomach stained with ARG44401 anti-LGI4 antibody at 0.5 $\mu\text{g}/\text{mL}$ dilution.



ARG44401 anti-LGI4 antibody IHC-P image

Immunohistochemistry: Human liver cancer stained with ARG44401 anti-LGI4 antibody at 2 $\mu\text{g}/\text{mL}$ dilution.