

## ARG44399 anti-LEKR1 antibody

Package: 50 µg  
Store at: -20°C

### Summary

Product Description	Rabbit Polyclonal antibody recognizes LEKR1
Tested Reactivity	Hu, Ms, Rat
Tested Application	ICC/IF, IHC-P, WB
Host	Rabbit
Clonality	Polyclonal
Target Name	LEKR1
Species	Human
Immunogen	Human LEKR1 recombinant protein (aa. sequence: K590-R688).
Conjugation	Un-conjugated
Alternate Names	LEKR1; Leucine, Glutamate And Lysine Rich 1

### Application Instructions

Application table	Application	Dilution
	ICC/IF	5 µg/ml
	IHC-P	2-5 µg/ml
	WB	0.1-0.25 µg/ml
Application Note	The dilutions indicate recommended starting dilutions and the optimal dilutions or concentrations should be determined by the scientist.	

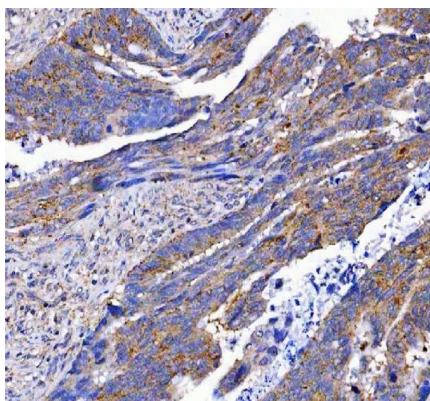
### Properties

Form	Liquid
Purification	Affinity purification with immunogen.
Buffer	0.9% NaCl, 0.2% Na <sub>2</sub> HPO <sub>4</sub> , 0.05% Sodium azide and 4% Trehalose.
Preservative	0.05% Sodium azide
Stabilizer	4% Trehalose
Concentration	0.5 mg/ml
Storage instruction	For continuous use, store undiluted antibody at 2-8°C for up to a week. For long-term storage, aliquot and store at -20°C or below. Storage in frost free freezers is not recommended. Avoid repeated freeze/thaw cycles. Suggest spin the vial prior to opening. The antibody solution should be gently mixed before use.

### Bioinformation

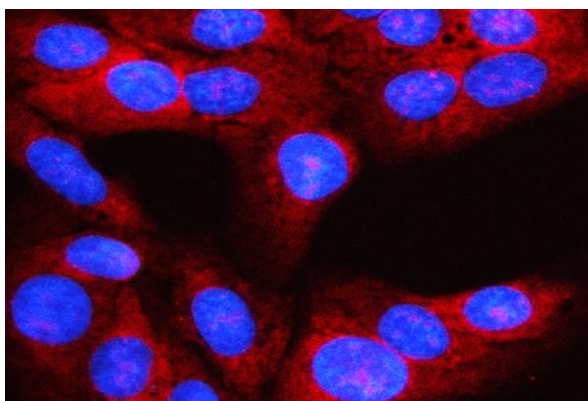
Gene Symbol	LEKR1
Gene Full Name	Leucine, Glutamate And Lysine Rich 1
Background	LEKR1 (Leucine, Glutamate And Lysine Rich 1) is a Protein Coding gene. Diseases associated with LEKR1 include Obsessive-Compulsive Personality Disorder. Gene Ontology (GO) annotations related to this gene include structural constituent of ribosome.
Calculated Mw	16 kDa

## Images



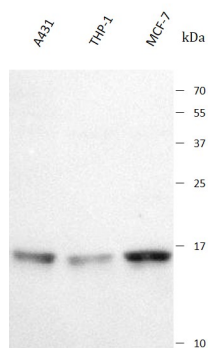
ARG44399 anti-LEKR1 antibody IHC-P image

Immunohistochemistry: Human colorectal adenocarcinoma stained with ARG44399 anti-LEKR1 antibody at 2  $\mu\text{g}/\text{mL}$  dilution.



ARG44399 anti-LEKR1 antibody ICC/IF image

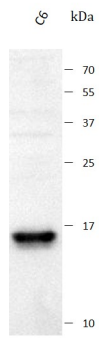
Immunofluorescence: U2OS stained with ARG44399 anti-LEKR1 antibody at 5  $\mu\text{g}/\text{mL}$  dilution.



ARG44399 anti-LEKR1 antibody WB image

Western blot: A431, THP-1 and MCF-7 stained with ARG44399 anti-LEKR1 antibody at 0.25  $\mu\text{g}/\text{mL}$  dilution.

ARG44399 anti-LEKR1 antibody WB image



Western blot: C6 stained with ARG44399 anti-LEKR1 antibody at 0.25  $\mu\text{g}/\text{mL}$  dilution.

ARG44399 anti-LEKR1 antibody WB image



Western blot: RAW264.7 stained with ARG44399 anti-LEKR1 antibody at 0.25  $\mu\text{g}/\text{mL}$  dilution.