

ARG44397 anti-LAD1 antibody

Package: 50 µg
Store at: -20°C

Summary

Product Description	Rabbit Polyclonal antibody recognizes LAD1
Tested Reactivity	Hu
Tested Application	FACS, ICC/IF, WB
Host	Rabbit
Clonality	Polyclonal
Target Name	LAD1
Species	Human
Immunogen	Human LAD1 recombinant protein (aa. sequence: E60-Q483).
Conjugation	Un-conjugated
Alternate Names	LAD1; Ladinin 1; Ladinin-1; Lad-1; Linear IgA Bullous Dermatitis Antigen; Linear IgA Disease Antigen Homolog; Linear IgA Disease Antigen; LadA; LAD

Application Instructions

Application table	Application	Dilution
	FACS	1-3 µg/1x10 ⁶ cells
	ICC/IF	5 µg/ml
	WB	0.25-0.5 µg/ml
Application Note	The dilutions indicate recommended starting dilutions and the optimal dilutions or concentrations should be determined by the scientist.	

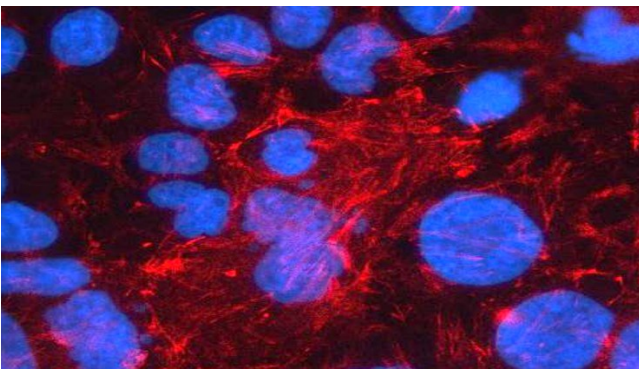
Properties

Form	Liquid
Purification	Affinity purification with immunogen.
Buffer	0.9% NaCl, 0.2% Na ₂ HPO ₄ , 0.05% Sodium azide and 4% Trehalose.
Preservative	0.05% Sodium azide
Stabilizer	4% Trehalose
Concentration	0.5 mg/ml
Storage instruction	For continuous use, store undiluted antibody at 2-8°C for up to a week. For long-term storage, aliquot and store at -20°C or below. Storage in frost free freezers is not recommended. Avoid repeated freeze/thaw cycles. Suggest spin the vial prior to opening. The antibody solution should be gently mixed before use.

Bioinformation

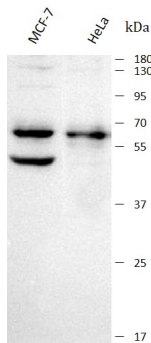
Gene Symbol	LAD1
Gene Full Name	Ladinin 1
Background	The protein encoded by this gene may be an anchoring filament that is a component of basement membranes. It may contribute to the stability of the association of the epithelial layers with the underlying mesenchyme.
Function	Anchoring filament protein which is a component of the basement membrane zone.
Calculated Mw	57 kDa
PTM	Methylation, Phosphoprotein
Cellular Localization	Basement membrane, Extracellular matrix, Secreted

Images



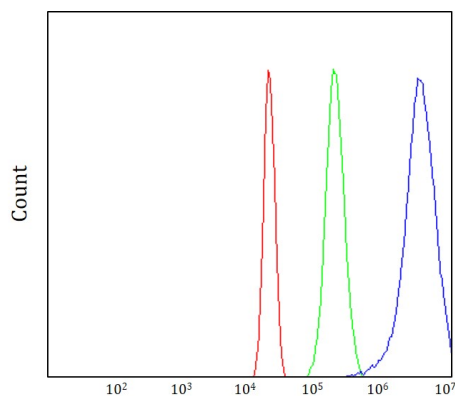
ARG44397 anti-LAD1 antibody ICC/IF image

Immunofluorescence: Caco-2 stained with ARG44397 anti-LAD1 antibody at 5 $\mu\text{g}/\text{mL}$ dilution.



ARG44397 anti-LAD1 antibody WB image

Western blot: MCF-7 and HeLa stained with ARG44397 anti-LAD1 antibody at 0.5 $\mu\text{g}/\text{mL}$ dilution.



ARG44397 anti-LAD1 antibody FACS image

Flow Cytometry: HepG2 stained with ARG44397 anti-LAD1 antibody at 1 $\mu\text{g}/10^6$ cells dilution.