

ARG44395 anti-MZB1 antibody

Package: 50 µg
Store at: -20°C

Summary

Product Description	Rabbit Polyclonal antibody recognizes MZB1
Tested Reactivity	Hu
Tested Application	FACS, ICC/IF, IHC-P, WB
Host	Rabbit
Clonality	Polyclonal
Target Name	MZB1
Species	Human
Immunogen	Human MZB1 recombinant protein (aa. sequence: D23-L189).
Conjugation	Un-conjugated
Alternate Names	MZB1; Marginal Zone B And B1 Cell Specific Protein; MEDA-7; PACAP; HSPC190; PERp1; Plasma Cell-Induced Resident Endoplasmic Reticulum Protein; Mesenteric Oestrogen-Dependent Adipose Gene- 7; Marginal Zone B- And B1-Cell-Specific Protein; Mesenteric Estrogen-Dependent Adipose 7; Plasma Cell-Induced Resident ER Protein; Proapoptotic Caspase Adaptor Protein; Proapoptotic Caspase Adapter Protein; Plasma Cell-Induced ER Protein 1

Application Instructions

Application table	Application	Dilution
	FACS	1-3 µg/1x10 ⁶ cells
	ICC/IF	5 µg/ml
	IHC-P	1-2 µg/ml
	WB	0.1-0.25 µg/ml

Application Note The dilutions indicate recommended starting dilutions and the optimal dilutions or concentrations should be determined by the scientist.

Properties

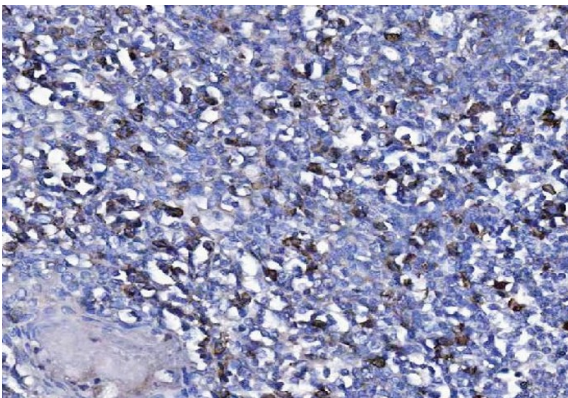
Form	Liquid
Purification	Affinity purification with immunogen.
Buffer	0.9% NaCl, 0.2% Na ₂ HPO ₄ , 0.05% Sodium azide and 4% Trehalose.
Preservative	0.05% Sodium azide
Stabilizer	4% Trehalose
Concentration	0.5 mg/ml
Storage instruction	For continuous use, store undiluted antibody at 2-8°C for up to a week. For long-term storage, aliquot and store at -20°C or below. Storage in frost free freezers is not recommended. Avoid repeated

freeze/thaw cycles. Suggest spin the vial prior to opening. The antibody solution should be gently mixed before use.

Bioinformation

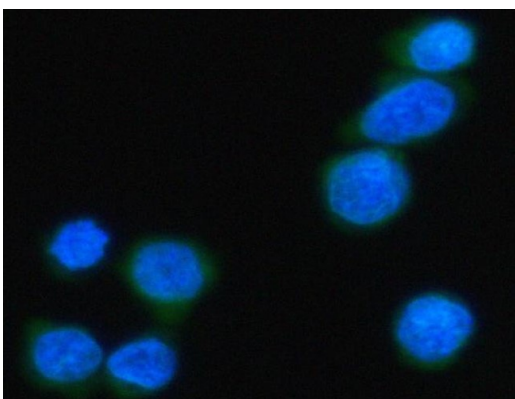
Gene Symbol	MZB1
Gene Full Name	Marginal Zone B And B1 Cell Specific Protein
Background	Involved in positive regulation of cell population proliferation. Located in cytoplasm and extracellular region.
Function	Associates with immunoglobulin M (IgM) heavy and light chains and promotes IgM assembly and secretion. May exert its effect by acting as a molecular chaperone or as an oxidoreductase as it displays a low level of oxidoreductase activity.
Calculated Mw	21 kDa
PTM	Disulfide bond
Cellular Localization	Cytoplasm, Endoplasmic reticulum, Secreted

Images



ARG44395 anti-MZB1 antibody IHC-P image

Immunohistochemistry: Human tonsil stained with ARG44395 anti-MZB1 antibody at 2 $\mu\text{g}/\text{mL}$ dilution.

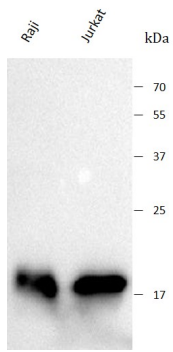


ARG44395 anti-MZB1 antibody ICC/IF image

Immunofluorescence: Jurkat stained with ARG44395 anti-MZB1 antibody at 5 $\mu\text{g}/\text{mL}$ dilution.

ARG44395 anti-MZB1 antibody WB image

Western blot: Raji and Jurkat stained with ARG44395 anti-MZB1 antibody at 0.25 $\mu\text{g}/\text{mL}$ dilution.



ARG44395 anti-MZB1 antibody FACS image

Flow Cytometry: JK stained with ARG44395 anti-MZB1 antibody at 1 $\mu\text{g}/10^6$ cells dilution.

