

## ARG44390 anti-RPL18 antibody

Package: 50 µg  
Store at: -20°C

### Summary

Product Description	Rabbit Polyclonal antibody recognizes RPL18
Tested Reactivity	Hu, Ms, Rat
Tested Application	FACS, ICC/IF, IHC-P, WB
Host	Rabbit
Clonality	Polyclonal
Target Name	RPL18
Species	Human
Immunogen	Human RPL18 recombinant protein (aa. sequence: K19-A177).
Conjugation	Un-conjugated
Alternate Names	RPL18; Ribosomal Protein L18; 60S Ribosomal Protein L18; L18; Large Ribosomal Subunit Protein EL18; EL18; DBA18

### Application Instructions

Application table	Application	Dilution
	FACS	1-3 µg/1x10 <sup>6</sup> cells
	ICC/IF	5 µg/ml
	IHC-P	2-5 µg/ml
	WB	0.25-0.5 µg/ml

**Application Note** The dilutions indicate recommended starting dilutions and the optimal dilutions or concentrations should be determined by the scientist.

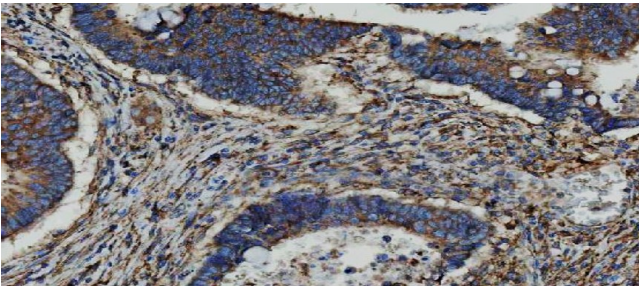
### Properties

Form	Liquid
Purification	Affinity purification with immunogen.
Buffer	0.9% NaCl, 0.2% Na <sub>2</sub> HPO <sub>4</sub> , 0.05% Sodium azide and 4% Trehalose.
Preservative	0.05% Sodium azide
Stabilizer	4% Trehalose
Concentration	0.5 mg/ml
Storage instruction	For continuous use, store undiluted antibody at 2-8°C for up to a week. For long-term storage, aliquot and store at -20°C or below. Storage in frost free freezers is not recommended. Avoid repeated freeze/thaw cycles. Suggest spin the vial prior to opening. The antibody solution should be gently mixed before use.

## Bioinformation

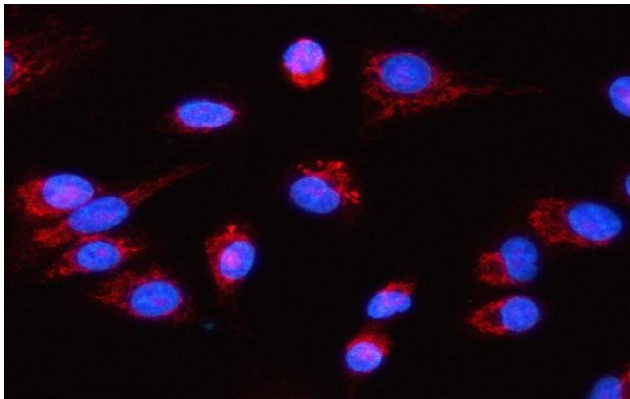
Gene Symbol	RPL18
Gene Full Name	Ribosomal Protein L18
Background	Ribosomes, the organelles that catalyze protein synthesis, consist of a small 40S subunit and a large 60S subunit. Together these subunits are composed of 4 RNA species and approximately 80 structurally distinct proteins. This gene encodes a member of the L18E family of ribosomal proteins that is a component of the 60S subunit. As is typical for genes encoding ribosomal proteins, there are multiple processed pseudogenes of this gene dispersed through the genome. Alternatively spliced transcript variants encoding multiple isoforms have been observed for this gene.
Function	Component of the large ribosomal subunit.
Calculated Mw	22 kDa
PTM	Isopeptide bond, Phosphoprotein, Ubl conjugation
Cellular Localization	Cytoplasm, Endoplasmic reticulum

## Images



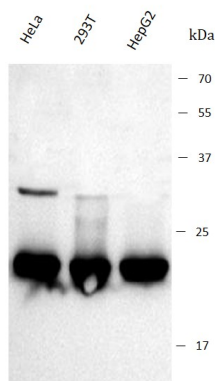
ARG44390 anti-RPL18 antibody IHC-P image

Immunohistochemistry: Human rectum adenocarcinoma stained with ARG44390 anti-RPL18 antibody at 2  $\mu\text{g}/\text{ml}$  dilution.



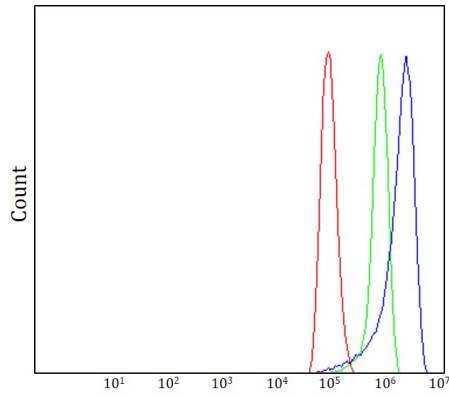
ARG44390 anti-RPL18 antibody ICC/IF image

Immunofluorescence: A549 stained with ARG44390 anti-RPL18 antibody at 5  $\mu\text{g}/\text{mL}$  dilution.



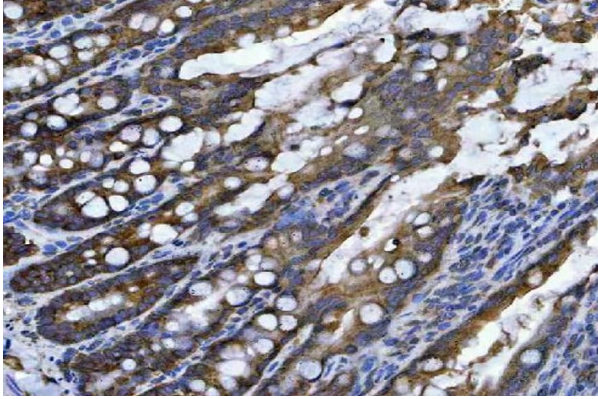
ARG44390 anti-RPL18 antibody WB image

Western blot: HeLa, 293T and HepG2 stained with ARG44390 anti-RPL18 antibody at 0.5  $\mu\text{g}/\text{mL}$  dilution.



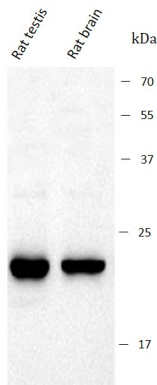
ARG44390 anti-RPL18 antibody FACS image

Flow Cytometry: HeLa stained with ARG44390 anti-RPL18 antibody at  $1 \mu\text{g}/10^6$  cells dilution.



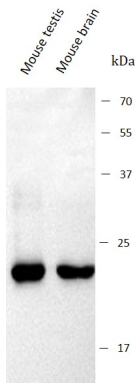
ARG44390 anti-RPL18 antibody IHC-P image

Immunohistochemistry: Rat colon stained with ARG44390 anti-RPL18 antibody at  $2 \mu\text{g}/\text{ml}$  dilution.



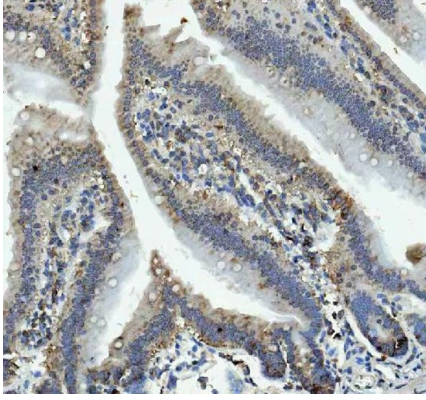
ARG44390 anti-RPL18 antibody WB image

Western blot: Rat testis and Rat brain stained with ARG44390 anti-RPL18 antibody at  $0.5 \mu\text{g}/\text{mL}$  dilution.



ARG44390 anti-RPL18 antibody WB image

Western blot: Mouse testis and Mouse brain stained with ARG44390 anti-RPL18 antibody at  $0.5 \mu\text{g}/\text{mL}$  dilution.



ARG44390 anti-RPL18 antibody IHC-P image

Immunohistochemistry: Mouse colon stained with ARG44390 anti-RPL18 antibody at 2  $\mu$ g/ml dilution.