

ARG44335 anti-SLIT3 antibody

Package: 50 µl
Store at: -20°C

Summary

Product Description	Rabbit Polyclonal recognizes SLIT3
Tested Reactivity	Hu
Predict Reactivity	Ms, Rat, Cow, Dog, Gpig, Hrs, Rb
Tested Application	WB
Host	Rabbit
Clonality	Polyclonal
Target Name	SLIT3
Species	Human
Immunogen	Synthetic peptide around the N-terminus of Human SLIT3.
Conjugation	Un-conjugated
Alternate Names	SLIT3; Slit Guidance Ligand 3; MEGF5; Slit-3; SLIT1; SLIL2; Multiple Epidermal Growth Factor-Like Domains Protein 5; Multiple EGF-Like Domains Protein 5; Multiple EGF Like Domains 5; Slit Homolog 3 Protein

Application Instructions

Predict Reactivity Note	Predicted homology based on immunogen sequence: Mouse: 93%; Rabbit: 93%; Rat: 93%; Cow: 100%; Dog: 100%; Guinea Pig: 93%; Horse: 100%;				
Application table	<table><thead><tr><th>Application</th><th>Dilution</th></tr></thead><tbody><tr><td>WB</td><td>1 - 5 µg/ml</td></tr></tbody></table>	Application	Dilution	WB	1 - 5 µg/ml
Application	Dilution				
WB	1 - 5 µg/ml				
Application Note	* The dilutions indicate recommended starting dilutions and the optimal dilutions or concentrations should be determined by the scientist.				

Properties

Form	Liquid
Purification	Affinity purification with immunogen.
Buffer	PBS, 0.09% (w/v) Sodium azide and 2% Sucrose.
Preservative	0.09% (w/v) Sodium azide
Stabilizer	2% Sucrose
Concentration	0.5 mg/ml
Storage instruction	For continuous use, store undiluted antibody at 2-8°C for up to a week. For long-term storage, aliquot and store at -20°C or below. Storage in frost free freezers is not recommended. Avoid repeated freeze/thaw cycles. Suggest spin the vial prior to opening. The antibody solution should be gently mixed before use.

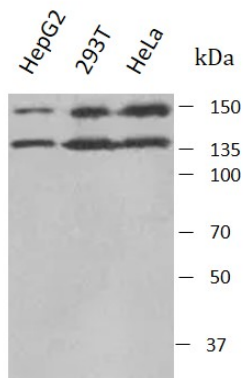
Note

For laboratory research only, not for drug, diagnostic or other use.

Bioinformation

Gene Symbol	SLIT3
Gene Full Name	Slit Guidance Ligand 3
Background	The protein encoded by this gene is secreted, likely interacting with roundabout homolog receptors to effect cell migration. Two transcript variants encoding different isoforms have been found for this gene.
Function	May act as molecular guidance cue in cellular migration, and function may be mediated by interaction with roundabout homolog receptors.
Calculated Mw	168 kDa
PTM	Disulfide bond, Glycoprotein
Cellular Localization	Secreted

Images



ARG44335 anti-SLIT3 antibody WB image

Western blot: HepG2, 293T and HeLa stained with ARG44335 anti-SLIT3 antibody at 3 μ g/ml dilution.