

ARG44334 anti-NGEF Antibody

Package: 100 µl

Summary

Product Description	Rabbit polyclonal recognizes NGEF
Tested Reactivity	Hu, Ms, Rat
Tested Application	IHC-P, WB
Host	Rabbit
Clonality	Polyclonal
Target Name	NGEF
Species	Human
Immunogen	Fusion protein of human NGEF
Conjugation	Un-conjugated
Alternate Names	NGEF; Neuronal Guanine Nucleotide Exchange Factor; ARHGEF27; Eph-Interacting Exchange Protein; Ephexin-1; Ephexin1; Ephexin; EPHEXIN

Application Instructions

Application table	Application	Dilution
	IHC-P	1 : 50 - 1 : 100
	WB	1 : 500 - 1 : 1000
Application Note	* The dilutions indicate recommended starting dilutions and the optimal dilutions or concentrations should be determined by the scientist.	

Properties

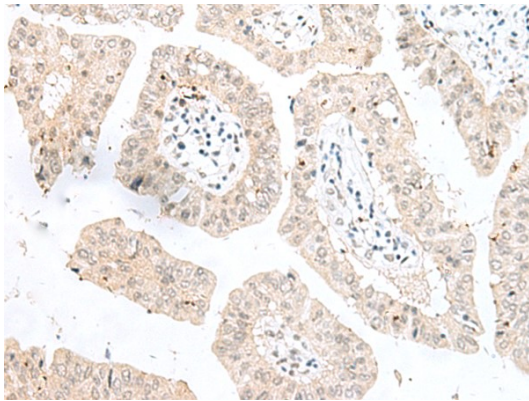
Form	Liquid
Purification	Affinity purified.
Buffer	PBS (pH 7.4), 0.05% Sodium azide and 40% Glycerol.
Preservative	0.05% Sodium azide
Stabilizer	40% Glycerol
Storage instruction	-20°C
Note	For continuous use, store undiluted antibody at 2-8°C for up to a week. For long-term storage, aliquot and store at -20°C. Storage in frost free freezers is not recommended. Avoid repeated freeze/thaw cycles. Suggest spin the vial prior to opening. The antibody solution should be gently mixed before use.

Bioinformation

Gene Symbol	NGEF
-------------	------

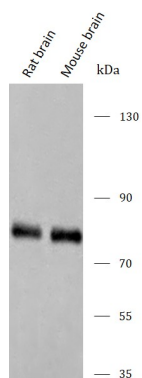
Gene Full Name	Neuronal Guanine Nucleotide Exchange Factor
Background	Enables guanyl-nucleotide exchange factor activity. Predicted to be involved in several processes, including activation of GTPase activity; ephrin receptor signaling pathway; and negative regulation of dendritic spine morphogenesis. Predicted to be located in cytosol. Predicted to be active in glutamatergic synapse.
Function	Acts as a guanine nucleotide exchange factor (GEF) which differentially activates the GTPases RHOA, RAC1 and CDC42. Plays a role in axon guidance regulating ephrin-induced growth cone collapse and dendritic spine morphogenesis. Upon activation by ephrin through EPHA4, the GEF activity switches toward RHOA resulting in its activation. Activated RHOA promotes cone retraction at the expense of RAC1- and CDC42-stimulated growth cone extension.
Calculated Mw	82 kDa
PTM	Phosphoprotein
Cellular Localization	Cell projection, Cytoplasm, Membrane

Images



ARG44334 anti-NGEF Antibody IHC-P image

Immunohistochemistry: Human liver cancer stained with ARG44334 anti-NGEF Antibody.



ARG44334 anti-NGEF Antibody WB image

Western blot: Rat brain and Mouse brain stained with ARG44334 anti-NGEF Antibody.