

ARG44306 anti-RDH11 antibody

Package: 50 µl
Store at: -20°C

Summary

Product Description	Rabbit Polyclonal antibody recognizes RDH11
Tested Reactivity	Hu
Tested Application	WB
Host	Rabbit
Clonality	Polyclonal
Isotype	IgG
Target Name	RDH11
Species	Human
Immunogen	Synthetic peptide
Conjugation	Un-conjugated
Alternate Names	RDH11; Retinol Dehydrogenase 11; SDR7C1; ARSDR1; Androgen-Regulated Short-Chain Dehydrogenase/Reductase 1; MDT1; Short Chain Dehydrogenase/Reductase Family 7C, Member 1; Retinol Dehydrogenase 11 (All-Trans/9-Cis/11-Cis); HCV Core-Binding Protein HCBP12; Retinal Reductase 1; PSDR1

Application Instructions

Application table	Application	Dilution
	WB	1:500-1:1000
Application Note	* The dilutions indicate recommended starting dilutions and the optimal dilutions or concentrations should be determined by the scientist.	

Properties

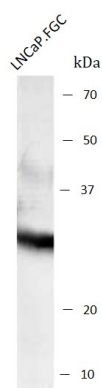
Form	Liquid
Purification	Antigen Affinity Purified
Buffer	PBS with 0.02% Sodium azide
Preservative	0.02% Sodium azide
Storage instruction	For continuous use, store undiluted antibody at 2-8°C for up to a week. For long-term storage, aliquot and store at -20°C. Storage in frost free freezers is not recommended. Avoid repeated freeze/thaw cycles. Suggest spin the vial prior to opening. The antibody solution should be gently mixed before use.

Bioinformation

Gene Symbol	RDH11
-------------	-------

Gene Full Name	Retinol Dehydrogenase 11
Background	Enables NADP-retinol dehydrogenase activity. Involved in cellular detoxification of aldehyde and retinoid metabolic process. Acts upstream of or within retinal metabolic process. Located in endoplasmic reticulum membrane.
Function	Retinol dehydrogenase with a clear preference for NADP. Displays high activity towards 9-cis, 11-cis and all-trans-retinol, and to a lesser extent on 13-cis-retinol.
Calculated Mw	35 kDa
Cellular Localization	Endoplasmic reticulum, Membrane

Images



ARG44306 anti-RDH11 antibody WB image

Western blot: LNCaP FGC stained with ARG44306 anti-RDH11 antibody.