

ARG44267 anti-SCRIBBLE antibody

Package: 50 µg
Store at: -20°C

Summary

Product Description	Goat Polyclonal antibody recognizes SCRIBBLE
Tested Reactivity	Hu
Predict Reactivity	Ms, Rat
Tested Application	IHC-P
Host	Goat
Clonality	Polyclonal
Isotype	IgG
Target Name	SCRIBBLE
Species	Human
Immunogen	Synthetic peptide around the internal region of Human SCRIBBLE (VRPGRRGLGPVPS)
Conjugation	Un-conjugated
Alternate Names	Protein LAP4; Vartul; SCRIB1; CRIB1; SCR1; Protein scribble homolog; hScrib; Scribble

Application Instructions

Application table	Application	Dilution
	IHC-P	6-8 µg/ml
Application Note	* The dilutions indicate recommended starting dilutions and the optimal dilutions or concentrations should be determined by the scientist.	

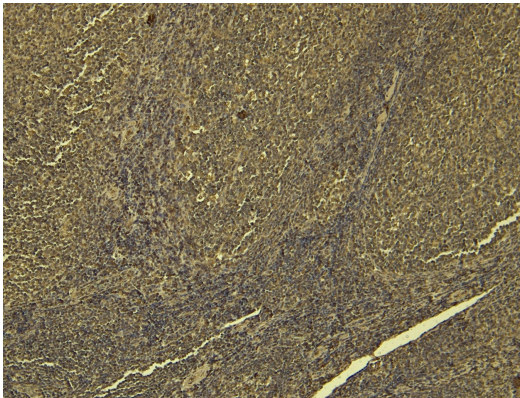
Properties

Form	Liquid
Purification	Ammonium sulphate precipitation followed by affinity purification with immunogen.
Buffer	Tris saline (pH 7.3), 0.02% Sodium azide and 0.5% BSA.
Preservative	0.02% Sodium azide
Stabilizer	0.5% BSA
Concentration	0.5 mg/ml
Storage instruction	For continuous use, store undiluted antibody at 2-8°C for up to a week. For long-term storage, aliquot and store at -20°C or below. Storage in frost free freezers is not recommended. Avoid repeated freeze/thaw cycles. Suggest spin the vial prior to opening. The antibody solution should be gently mixed before use.
Note	For laboratory research only, not for drug, diagnostic or other use.

Bioinformation

Gene Symbol	SCRIB
Gene Full Name	scribbled planar cell polarity protein
Background	This gene encodes a protein that was identified as being similar to the Drosophila scribble protein. The mammalian protein is involved in tumor suppression pathways. As a scaffold protein involved in cell polarization processes, this protein binds to many other proteins. The encoded protein binds to papillomavirus E6 protein via its PDZ domain and the C-terminus of E6. Two alternatively spliced transcript variants that encode different protein isoforms have been found for this gene. [provided by RefSeq, Nov 2011]
Function	Scaffold protein involved in different aspects of polarized cells differentiation regulating epithelial and neuronal morphogenesis. Most probably functions in the establishment of apico-basal cell polarity. May function in cell proliferation regulating progression from G1 to S phase and as a positive regulator of apoptosis for instance during acinar morphogenesis of the mammary epithelium. May also function in cell migration and adhesion and hence regulate cell invasion through MAPK signaling. May play a role in exocytosis and in the targeting synaptic vesicles to synapses. Functions as an activator of Rac GTPase activity. [UniProt]
PTM	Ubiquitinated; targeted for UBE3A-dependent multiubiquitination in the presence of high-risk HPV E6 proteins and degraded. [UniProt]
Cellular Localization	Cell membrane; Peripheral membrane protein. Cell junction, adherens junction. Cell projection, lamellipodium. Cytoplasm. Note=Targeting to cell-cell junctions which is CDH1-dependent is required for the pro-apoptotic activity. Localizes to neuronal post- and pre-synaptic regions. [UniProt]

Images



ARG44267 anti-SCRIBBLE antibody IHC-P image

Immunohistochemistry: Human Tonsil stained with ARG44267 anti-SCRIBBLE antibody at 8 µg/ml dilution.