

**ARG44261**  
**anti-Cathepsin B antibody**Package: 50 µg  
Store at: -20°C

### Summary

|                     |   |
|---------------------|---|
| Product Description | Goat Polyclonal antibody recognizes Cathepsin B                                   |
| Tested Reactivity   | Hu  |
| Predict Reactivity  | Cow, Rat, Dog, Pig  |
| Tested Application  | ICC/IF  |
| Host                | Goat  |
| Clonality           | Polyclonal  |
| Isotype             | IgG   |
| Target Name         | Cathepsin B   |
| Species             | Human   |
| Immunogen           | Synthetic peptide around the internal region of Human Cathepsin B (SRPPCTGEGDTPK) |
| Conjugation         | Un-conjugated   |
| Alternate Names     | EC 3.4.22.1; Cathepsin B; APPS; CPSB; APP secretase; Cathepsin B1                 |

### Application Instructions

|                   |  |          |
|-------------------|--|----------|
| Application table | Application  | Dilution |
|                   | ICC/IF   | 10 µg/µl |
| Application Note  | * The dilutions indicate recommended starting dilutions and the optimal dilutions or concentrations should be determined by the scientist. |          |

### Properties

|                     |  |
|---------------------|--|
| Form                | Liquid   |
| Purification        | Ammonium sulphate precipitation followed by affinity purification with immunogen.  |
| Buffer              | Tris saline (pH 7.3), 0.02% Sodium azide and 0.5% BSA.   |
| Preservative        | 0.02% Sodium azide   |
| Stabilizer          | 0.5% BSA   |
| Concentration       | 0.5 mg/ml  |
| Storage instruction | For continuous use, store undiluted antibody at 2-8°C for up to a week. For long-term storage, aliquot and store at -20°C or below. Storage in frost free freezers is not recommended. Avoid repeated freeze/thaw cycles. Suggest spin the vial prior to opening. The antibody solution should be gently mixed before use. |
| Note                | For laboratory research only, not for drug, diagnostic or other use.   |

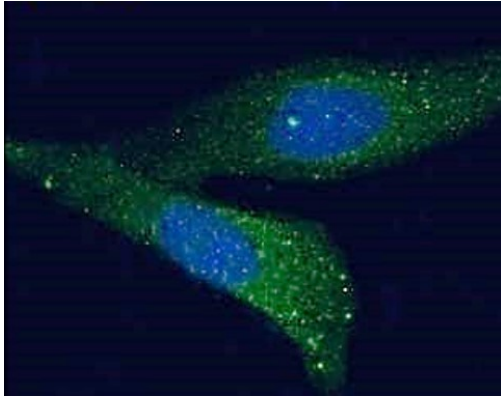
## Bioinformation

---

|                       |  |
|-----------------------|--|
| Gene Symbol           | CTSB   |
| Gene Full Name        | cathepsin B  |
| Background            | The protein encoded by this gene is a lysosomal cysteine proteinase composed of a dimer of disulfide-linked heavy and light chains, both produced from a single protein precursor. It is also known as amyloid precursor protein secretase and is involved in the proteolytic processing of amyloid precursor protein (APP). Incomplete proteolytic processing of APP has been suggested to be a causative factor in Alzheimer disease, the most common cause of dementia. Overexpression of the encoded protein, which is a member of the peptidase C1 family, has been associated with esophageal adenocarcinoma and other tumors. At least five transcript variants encoding the same protein have been found for this gene. [provided by RefSeq, Jul 2008] |
| Function              | Thiol protease which is believed to participate in intracellular degradation and turnover of proteins. Has also been implicated in tumor invasion and metastasis. [UniProt]  |
| Cellular Localization | Lysosome. Melanosome. Secreted, extracellular space. Note=Identified by mass spectrometry in melanosome fractions from stage I to stage IV. [UniProt]  |

## Images

---



ARG44261 anti-Cathepsin B antibody ICC/IF image

Immunofluorescence: HeLa stained with ARG44261 anti-Cathepsin B antibody at 10  $\mu\text{g}/\text{m}$  dilution.