

ARG44257 anti-PDGF BB antibody

Package: 50 µg
Store at: -20°C

Summary

Product Description	Goat Polyclonal antibody recognizes PDGF BB
Tested Reactivity	Hu
Predict Reactivity	Ms, Rat, Cow, Dog, Sheep
Tested Application	FACS, ICC/IF
Specificity	This antibody is expected to recognize isoform 1 and 2
Host	Goat
Clonality	Polyclonal
Isotype	IgG
Target Name	PDGF BB
Species	Human
Immunogen	Synthetic peptide around the internal region of Human PDGF BB (KHRKFKHTHDKT)
Conjugation	Un-conjugated
Alternate Names	SIS; Becaplermin; Platelet-derived growth factor subunit B; IBGC5; PDGF subunit B; c-sis; SSV; PDGF-2; Proto-oncogene c-Sis; Platelet-derived growth factor beta polypeptide; PDGF2; Platelet-derived growth factor B chain

Application Instructions

Application table	Application	Dilution
	FACS	10 µg/µl
	ICC/IF	10 µg/µl
Application Note	* The dilutions indicate recommended starting dilutions and the optimal dilutions or concentrations should be determined by the scientist.	

Properties

Form	Liquid
Purification	Ammonium sulphate precipitation followed by affinity purification with immunogen.
Buffer	Tris saline (pH 7.3), 0.02% Sodium azide and 0.5% BSA.
Preservative	0.02% Sodium azide
Stabilizer	0.5% BSA
Concentration	0.5 mg/ml
Storage instruction	For continuous use, store undiluted antibody at 2-8°C for up to a week. For long-term storage, aliquot and store at -20°C or below. Storage in frost free freezers is not recommended. Avoid repeated freeze/thaw cycles. Suggest spin the vial prior to opening. The antibody solution should be gently mixed

before use.

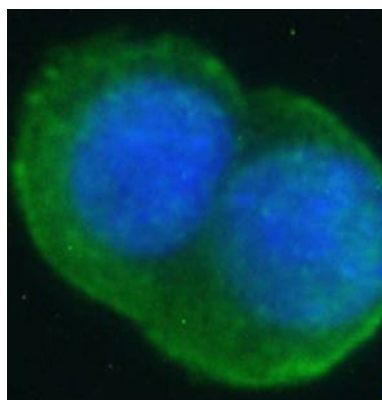
Note

For laboratory research only, not for drug, diagnostic or other use.

Bioinformation

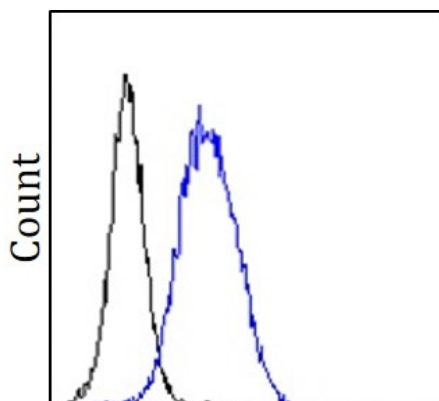
Gene Symbol	PDGFB
Gene Full Name	platelet-derived growth factor beta polypeptide
Background	The protein encoded by this gene is a member of the platelet-derived growth factor family. The four members of this family are mitogenic factors for cells of mesenchymal origin and are characterized by a motif of eight cysteines. This gene product can exist either as a homodimer (PDGF-BB) or as a heterodimer with the platelet-derived growth factor alpha polypeptide (PDGF-AB), where the dimers are connected by disulfide bonds. Mutations in this gene are associated with meningioma. Reciprocal translocations between chromosomes 22 and 17, at sites where this gene and that for collagen type 1, alpha 1 are located, are associated with a particular type of skin tumor called dermatofibrosarcoma protuberans resulting from unregulated expression of growth factor. Two alternatively spliced transcript variants encoding different isoforms have been identified for this gene. [provided by RefSeq, Feb 2013]
Function	Growth factor that plays an essential role in the regulation of embryonic development, cell proliferation, cell migration, survival and chemotaxis. Potent mitogen for cells of mesenchymal origin. Required for normal proliferation and recruitment of pericytes and vascular smooth muscle cells in the central nervous system, skin, lung, heart and placenta. Required for normal blood vessel development, and for normal development of kidney glomeruli. Plays an important role in wound healing. Signaling is modulated by the formation of heterodimers with PDGFA (By similarity). [UniProt]

Images



ARG44257 anti-PDGF B antibody ICC/IF image

Immunofluorescence: MCF7 stained with ARG44257 anti-PDGF B antibody at 10 µg/m dilution.



ARG44257 anti-PDGF B antibody FACS image

Flow Cytometry: HeLa stained with ARG44257 anti-PDGF B antibody at 10 µg/m dilution.