

ARG44255 anti-CLEC2D antibody

Package: 50 µg
Store at: -20°C

Summary

Product Description	Goat Polyclonal antibody recognizes CLEC2D
Tested Reactivity	Hu
Predict Reactivity	Cow, Dog
Tested Application	FACS, ICC/IF, IHC-P, WB
Specificity	This antibody is expected to recognize all isoforms
Host	Goat
Clonality	Polyclonal
Isotype	IgG
Target Name	CLEC2D
Species	Human
Immunogen	Synthetic peptide around the internal region of Human CLEC2D (LLRYKGPSDH)
Conjugation	Un-conjugated
Alternate Names	CLEC2D; C-Type Lectin Domain Family 2 Member D; LLT1; CLAX; OCIL; Lectin-Like Transcript 1; C-Type Lectin Superfamily 2, Member D; Lectin-Like NK Cell Receptor

Application Instructions

Application table	Application	Dilution
	FACS	10 µg/µl
	ICC/IF	10 µg/µl
	IHC-P	3.75 µg/µl
	WB	0.3-1 µg/µl
Application Note	* The dilutions indicate recommended starting dilutions and the optimal dilutions or concentrations should be determined by the scientist.	
Observed Size	~ 31 kDa	

Properties

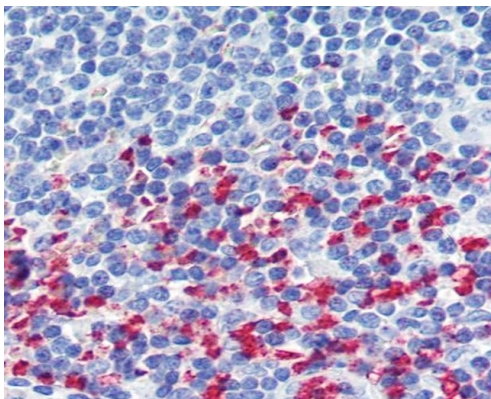
Form	Liquid
Purification	Ammonium sulphate precipitation followed by affinity purification with immunogen.
Buffer	Tris saline (pH 7.3), 0.02% Sodium azide and 0.5% BSA.
Preservative	0.02% Sodium azide
Stabilizer	0.5% BSA

Concentration	0.5 mg/ml
Storage instruction	For continuous use, store undiluted antibody at 2-8°C for up to a week. For long-term storage, aliquot and store at -20°C or below. Storage in frost free freezers is not recommended. Avoid repeated freeze/thaw cycles. Suggest spin the vial prior to opening. The antibody solution should be gently mixed before use.
Note	For laboratory research only, not for drug, diagnostic or other use.

Bioinformation

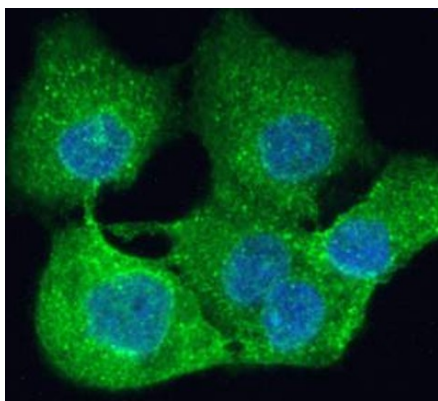
Gene Symbol	CLEC2D
Gene Full Name	C-Type Lectin Domain Family 2 Member D
Background	This gene encodes a member of the natural killer cell receptor C-type lectin family. The encoded protein inhibits osteoclast formation and contains a transmembrane domain near the N-terminus as well as the C-type lectin-like extracellular domain. Several alternatively spliced transcript variants have been identified for this gene.
Function	Receptor for KLRB1 that protects target cells against natural killer cell-mediated lysis.
Calculated Mw	22 kDa
PTM	Disulfide bond, Glycoprotein
Cellular Localization	Cell membrane, Endoplasmic reticulum, Membrane

Images



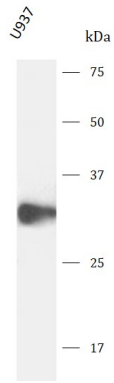
ARG44255 anti-CLEC2D antibody IHC-P image

Immunohistochemistry: Human Tonsil stained with ARG44255 anti-CLEC2D antibody at 3.75µg/ml dilution.



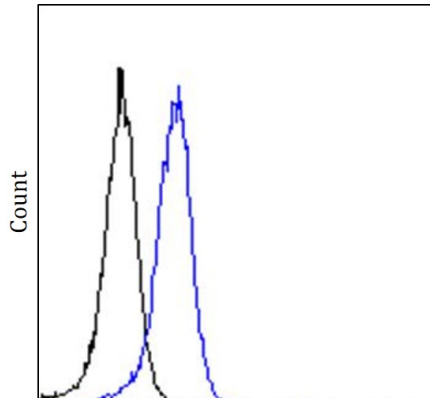
ARG44255 anti-CLEC2D antibody ICC/IF image

Immunofluorescence: A431 stained with ARG44255 anti-CLEC2D antibody at 10 µg/m dilution.



ARG44255 anti-CLEC2D antibody WB image

Western blot: U937 stained with ARG44255 anti-CLEC2D antibody at 0.3 $\mu\text{g}/\text{m}$ dilution.



ARG44255 anti-CLEC2D antibody FACS image

Flow Cytometry: Jurkat stained with ARG44255 anti-CLEC2D antibody at 10 $\mu\text{g}/\text{m}$ dilution.