

ARG44251 anti-ERCC1 antibody

Package: 50 µg
Store at: -20°C

Summary

Product Description	Goat Polyclonal antibody recognizes ERCC1
Tested Reactivity	Hu
Predict Reactivity	Ms, Rat, Cow, Dog
Tested Application	ICC/IF
Host	Goat
Clonality	Polyclonal
Isotype	IgG
Target Name	ERCC1
Species	Human
Immunogen	Synthetic peptide around the internal region of Human ERCC1 (QVDVKDPQQALKE)
Conjugation	Un-conjugated
Alternate Names	DNA excision repair protein ERCC-1; RAD10; COFS4; UV20

Application Instructions

Application table	Application	Dilution
	ICC/IF	10 µg/ml
Application Note	* The dilutions indicate recommended starting dilutions and the optimal dilutions or concentrations should be determined by the scientist.	

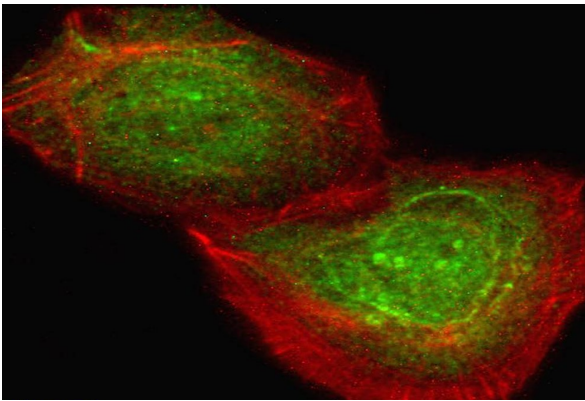
Properties

Form	Liquid
Purification	Ammonium sulphate precipitation followed by affinity purification with immunogen.
Buffer	Tris saline (pH 7.3), 0.02% Sodium azide and 0.5% BSA.
Preservative	0.02% Sodium azide
Stabilizer	0.5% BSA
Concentration	0.5 mg/ml
Storage instruction	For continuous use, store undiluted antibody at 2-8°C for up to a week. For long-term storage, aliquot and store at -20°C or below. Storage in frost free freezers is not recommended. Avoid repeated freeze/thaw cycles. Suggest spin the vial prior to opening. The antibody solution should be gently mixed before use.
Note	For laboratory research only, not for drug, diagnostic or other use.

Bioinformation

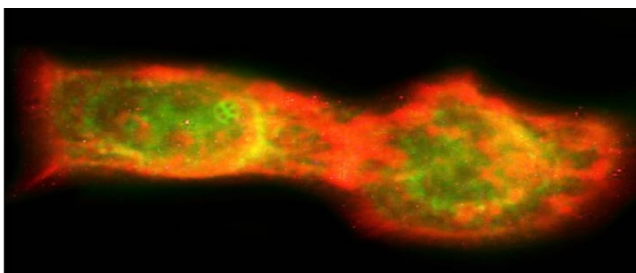
Gene Symbol	ERCC1
Gene Full Name	excision repair cross-complementation group 1
Background	Isoform 1:Non-catalytic component of a structure-specific DNA repair endonuclease responsible for the 5'-incision during DNA repair.Responsible,in conjunction with SLX4,for the first step in the repair of interstrand cross-links (ICL).Participates in the processing of anaphase bridge-generating DNA structures,which consist in incompletely processed DNA lesions arising during S or G2 phase,and can result in cytokinesis failure.Also required for homology-directed repair (HDR) of DNA double-strand breaks,in conjunction with SLX4.
Function	Isoform 1: Non-catalytic component of a structure-specific DNA repair endonuclease responsible for the 5'-incision during DNA repair. Responsible, in conjunction with SLX4, for the first step in the repair of interstrand cross-links (ICL). Participates in the processing of anaphase bridge-generating DNA structures, which consist in incompletely processed DNA lesions arising during S or G2 phase, and can result in cytokinesis failure. Also required for homology-directed repair (HDR) of DNA double-strand breaks, in conjunction with SLX4. [UniProt]
Research Area	Cancer antibody; Gene Regulation antibody
Cellular Localization	Isoform 1: Nucleus. Isoform 2: Cytoplasm. Nucleus. Isoform 3: Nucleus. Isoform 4: Nucleus.

Images



ARG44251 anti-ERCC1 antibody ICC/IF image

Immunofluorescence: U2OS stained with ARG44251 anti-ERCC1 antibody at 10ug/ml dilution.



ARG44251 anti-ERCC1 antibody ICC/IF image

Immunofluorescence: A431 stained with ARG44251 anti-ERCC1 antibody at 10ug/ml dilution.