

ARG44248 anti-Claudin 1 antibody

Package: 50 µg
Store at: -20°C

Summary

Product Description	Rabbit Polyclonal antibody recognizes Claudin 1
Tested Reactivity	Hu
Tested Application	ICC/IF, IHC-P
Host	Rabbit
Clonality	Polyclonal
Isotype	IgG
Target Name	Claudin 1
Species	Human
Immunogen	Synthetic peptide derived from Human Claudin 1.
Conjugation	Un-conjugated
Alternate Names	ILVASC; Senescence-associated epithelial membrane protein; CLD1; SEMP1; Claudin-1

Application Instructions

Application table	Application	Dilution
	ICC/IF	5 µg/ml
	IHC-P	2 - 5 µg/ml
Application Note	* The dilutions indicate recommended starting dilutions and the optimal dilutions or concentrations should be determined by the scientist.	

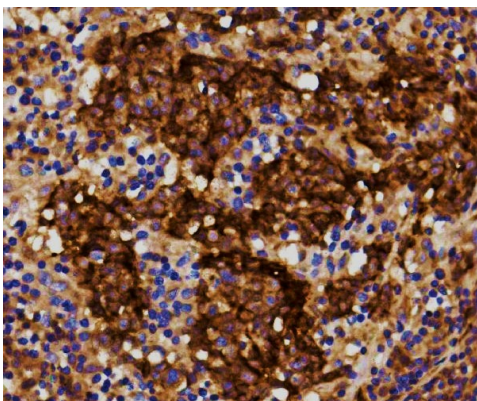
Properties

Form	Liquid
Purification	Affinity purification with immunogen.
Buffer	0.2% Na ₂ HPO ₄ , 0.9% NaCl, 0.01% Sodium azide and 4% Trehalose.
Preservative	0.01% Sodium azide
Stabilizer	4% Trehalose
Concentration	0.5 mg/ml
Storage instruction	For continuous use, store undiluted antibody at 2-8°C for up to a week. For long-term storage, aliquot and store at -20°C or below. Storage in frost free freezers is not recommended. Avoid repeated freeze/thaw cycles. Suggest spin the vial prior to opening. The antibody solution should be gently mixed before use.
Note	For laboratory research only, not for drug, diagnostic or other use.

Bioinformation

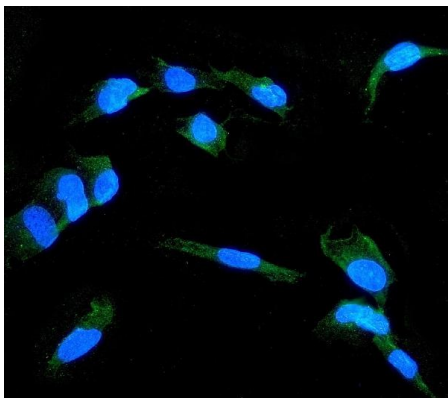
Gene Symbol	CLDN1
Gene Full Name	claudin 1
Background	Tight junctions represent one mode of cell-to-cell adhesion in epithelial or endothelial cell sheets, forming continuous seals around cells and serving as a physical barrier to prevent solutes and water from passing freely through the paracellular space. These junctions are comprised of sets of continuous networking strands in the outwardly facing cytoplasmic leaflet, with complementary grooves in the inwardly facing extracytoplasmic leaflet. The protein encoded by this gene, a member of the claudin family, is an integral membrane protein and a component of tight junction strands. Loss of function mutations result in neonatal ichthyosis-sclerosing cholangitis syndrome. [provided by RefSeq, Jul 2008]
Function	Claudins function as major constituents of the tight junction complexes that regulate the permeability of epithelia. While some claudin family members play essential roles in the formation of impermeable barriers, others mediate the permeability to ions and small molecules. Often, several claudin family members are coexpressed and interact with each other, and this determines the overall permeability. CLDN1 is required to prevent the paracellular diffusion of small molecules through tight junctions in the epidermis and is required for the normal barrier function of the skin. Required for normal water homeostasis and to prevent excessive water loss through the skin, probably via an indirect effect on the expression levels of other proteins, since CLDN1 itself seems to be dispensable for water barrier formation in keratinocyte tight junctions. CLDN1 acts as a coreceptor for HCV entry into hepatic cells. [UniProt]
Calculated Mw	23 kDa
Cellular Localization	Cell junction, tight junction. Cell membrane; Multi-pass membrane protein. Basolateral cell membrane. Note=Associates with CD81 and the CLDN1-CD81 complex localizes to the basolateral cell membrane. [UniProt]

Images



ARG44248 anti-Claudin 1 antibody IHC-P image

Immunohistochemistry: Human lung cancer stained with ARG44248 anti-Claudin 1 antibody at 2 μg / mL dilution.



ARG44248 anti-Claudin 1 antibody ICC/IF image

Immunofluorescence: A549 stained with ARG44248 anti-Claudin 1 antibody at 5 μg / mL dilution.