

## ARG44245 anti-CD49f / Integrin alpha 6 antibody [GoH3] (APC)

Package: 100 tests  
Store at: 4°C

### Summary

Product Description	APC-conjugated Rat Monoclonal antibody [GoH3] recognizes CD49f / Integrin alpha 6
Tested Reactivity	Hu, Ms, Cat, Cow, Dog, Hrs, NHuPrm, Pig, Rb, Sheep
Tested Application	FACS
Host	Rat
Clonality	Monoclonal
Clone	GoH3
Isotype	IgG2a
Target Name	CD49f / Integrin alpha 6
Species	Mouse
Immunogen	Mouse mammary tumor cells
Conjugation	APC
Alternate Names	CD49 antigen-like family member F; ITGA6B; Alpha6p; VLA-6; CD antigen CD49f; CD49f; Integrin alpha-6

### Application Instructions

Application table	Application	Dilution
	FACS	10 µl / 10 <sup>6</sup> cells
Application Note	* The dilutions indicate recommended starting dilutions and the optimal dilutions or concentrations should be determined by the scientist.	

### Properties

Form	Liquid
Purification	Purified
Buffer	PBS (pH 7.4) and 15 mM Sodium azide.
Preservative	15 mM Sodium azide
Storage instruction	Aliquot and store in the dark at 2-8°C. Keep protected from prolonged exposure to light. Do not freeze. Suggest spin the vial prior to opening. The antibody solution should be gently mixed before use.
Note	For laboratory research only, not for drug, diagnostic or other use.

### Bioinformation

Gene Symbol	ITGA6
Gene Full Name	integrin, alpha 6

## Background

The ITGA6 protein product is the integrin alpha chain alpha 6. Integrins are integral cell-surface proteins composed of an alpha chain and a beta chain. A given chain may combine with multiple partners resulting in different integrins. For example, alpha 6 may combine with beta 4 in the integrin referred to as TSP180, or with beta 1 in the integrin VLA-6. Integrins are known to participate in cell adhesion as well as cell-surface mediated signalling. Two transcript variants encoding different isoforms have been found for this gene. [provided by RefSeq, Jul 2008]

## Function

Integrin alpha-6/beta-1 is a receptor for laminin on platelets. Integrin alpha-6/beta-4 is a receptor for laminin in epithelial cells and it plays a critical structural role in the hemidesmosome. [UniProt]

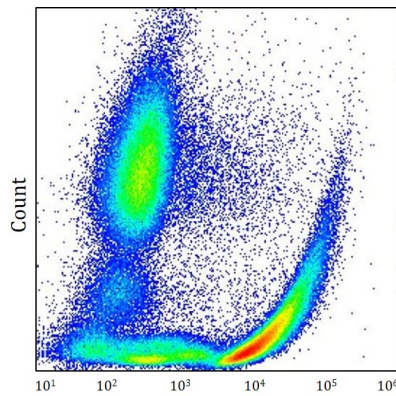
## PTM

Isoforms containing segment A, but not segment B, are the major targets for PMA-induced phosphorylation. Phosphorylation occurs on 'Ser-1103' of isoform alpha-6X1X2A. Phosphorylation is not required for the induction of integrin alpha-6A/beta-1 high affinity but may reduce the affinity for ligand.

In invasive prostate cancer ITGA6 undergoes PLAU-mediated cleavage at residues Arg-634-635-Arg in a time-dependent manner enhancing cell invasion and migration in vitro. Palmitoylation by DHH3 enhances stability and cell surface expression.

## Images

---



ARG44245 anti-CD49f / Integrin alpha 6 antibody [GoH3] (APC) FACS image

Flow Cytometry: Human whole blood stained with ARG44245 anti-CD49f / Integrin alpha 6 antibody [GoH3] (APC) at 10  $\mu$ l / 100  $\mu$ l whole blood dilution.