

ARG44237 anti-RTN4IP1 antibody

Package: 50 µg
Store at: -20°C

Summary

Product Description	Rabbit Polyclonal antibody recognizes RTN4IP1
Tested Reactivity	Hu, Ms, Rat
Tested Application	FACS, WB
Host	Rabbit
Clonality	Polyclonal
Isotype	IgG
Target Name	RTN4IP1
Species	Human
Immunogen	Recombinant protein of Human RTN4IP1
Conjugation	Un-conjugated
Alternate Names	RTN4IP1; Reticulon 4 Interacting Protein 1; NIMP; Reticulon-4-Interacting Protein 1, Mitochondrial; NOGO-Interacting Mitochondrial Protein; OPA10

Application Instructions

Application table	Application	Dilution
	FACS	1-3 µg/1x10 ⁶ cells
	WB	0.25-0.5 µg/ml

Application Note * The dilutions indicate recommended starting dilutions and the optimal dilutions or concentrations should be determined by the scientist.

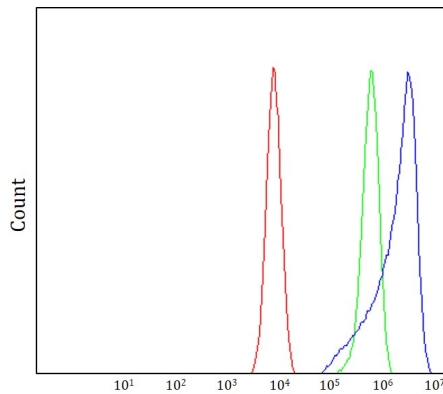
Properties

Form	Liquid
Purification	Affinity purification with immunogen.
Buffer	0.9% NaCl, 0.2% Na ₂ HPO ₄ , 0.05% Sodium azide and 5% BSA.
Preservative	0.05% Sodium azide
Stabilizer	5% BSA
Concentration	0.5 mg/ml
Storage instruction	For continuous use, store undiluted antibody at 2-8°C for up to a week. For long-term storage, aliquot and store at -20°C or below. Storage in frost free freezers is not recommended. Avoid repeated freeze/thaw cycles. Suggest spin the vial prior to opening. The antibody solution should be gently mixed before use.
Note	For laboratory research only, not for drug, diagnostic or other use.

Bioinformation

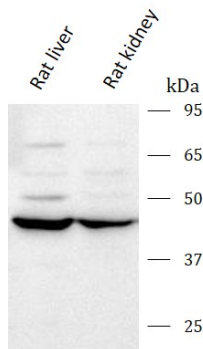
Gene Symbol	RTN4IP1
Gene Full Name	Reticulon 4 Interacting Protein 1
Background	This gene encodes a mitochondrial protein that interacts with reticulon 4, which is a potent inhibitor of regeneration following spinal cord injury. This interaction may be important for reticulon-induced inhibition of neurite growth. Mutations in this gene can cause optic atrophy 10, with or without ataxia, cognitive disability, and seizures. There is a pseudogene for this gene on chromosome 12. Alternative splicing results in multiple transcript variants.
Function	Plays a role in the regulation of retinal ganglion cell (RGC) neurite outgrowth, and hence in the development of the inner retina and optic nerve. Appears to be a potent inhibitor of regeneration following spinal cord injury.
Calculated Mw	44 kDa
PTM	Membrane, Mitochondrion, Mitochondrion outer membrane

Images



ARG44237 anti-RTN4IP1 antibody FACS image

Flow Cytometry: K562 stained with ARG44237 anti-RTN4IP1 antibody at 1 µg/1x10⁶ cells dilution.



ARG44237 anti-RTN4IP1 antibody WB image

Western blot: Rat liver and Rat kidney stained with ARG44237 anti-RTN4IP1 antibody at 0.5 µg/mL dilution.

ARG44237 anti-RTN4IP1 antibody WB image

Western blot: Mouse liver and Mouse kidney stained with ARG44237 anti-RTN4IP1 antibody at 0.5 $\mu\text{g}/\text{mL}$ dilution.

