

## ARG44233 anti-MLLT10 / AF10 antibody

Package: 50 µg  
Store at: -20°C

### Summary

Product Description	Rabbit Polyclonal antibody recognizes MLLT10 / AF10
Tested Reactivity	Hu, Ms, Rat
Tested Application	FACS, ICC/IF, WB
Host	Rabbit
Clonality	Polyclonal
Isotype	IgG
Target Name	MLLT10 / AF10
Species	Human
Immunogen	Recombinant protein of Human MLLT10 / AF10
Conjugation	Un-conjugated
Alternate Names	MLLT10; MLLT10 Histone Lysine Methyltransferase DOT1L Cofactor; AF10; Myeloid/Lymphoid Or Mixed-Lineage Leukemia; Translocated To, 10; ALL1-Fused Gene From Chromosome 10 Protein; Protein AF-10; Myeloid/Lymphoid Or Mixed-Lineage Leukemia (Trithorax (Drosophila) Homolog); Translocated To, 10; Myeloid/Lymphoid Or Mixed-Lineage Leukemia (Trithorax Homolog, Drosophila); Translocated To, 10; Type III AF10 Protein; Type IV AF10 Protein; Type I AF10 Protein

### Application Instructions

Application table	Application	Dilution
	FACS	1-3 µg/1x10 <sup>6</sup> cells
	ICC/IF	5 µg/ml
	WB	0.25-0.5 µg/ml

**Application Note** \* The dilutions indicate recommended starting dilutions and the optimal dilutions or concentrations should be determined by the scientist.

### Properties

Form	Liquid
Purification	Affinity purification with immunogen.
Buffer	0.9% NaCl, 0.2% Na <sub>2</sub> HPO <sub>4</sub> , 0.05% Sodium azide and 5% BSA.
Preservative	0.05% Sodium azide
Stabilizer	5% BSA
Concentration	0.5 mg/ml
Storage instruction	For continuous use, store undiluted antibody at 2-8°C for up to a week. For long-term storage, aliquot and store at -20°C or below. Storage in frost free freezers is not recommended. Avoid repeated

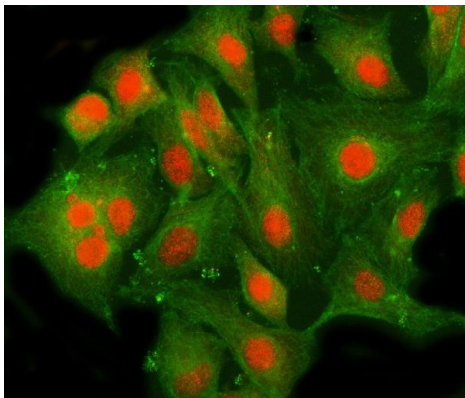
freeze/thaw cycles. Suggest spin the vial prior to opening. The antibody solution should be gently mixed before use.

**Note** For laboratory research only, not for drug, diagnostic or other use.

## Bioinformation

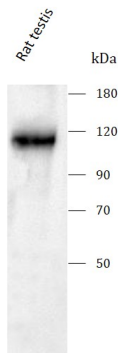
Gene Symbol	MLLT10
Gene Full Name	MLL10 Histone Lysine Methyltransferase Dot1L Cofactor
Background	This gene encodes a transcription factor and has been identified as a partner gene involved in several chromosomal rearrangements resulting in various leukemias. Multiple transcript variants encoding different isoforms have been found for this gene.
Function	Probably involved in transcriptional regulation. In vitro or as fusion protein with KMT2A/MLL1 has transactivation activity. Binds to cruciform DNA. In cells, binding to unmodified histone H3 regulates DOT1L functions including histone H3 'Lys-79' dimethylation (H3K79me2) and gene activation.
Calculated Mw	113 kDa
PTM	Isopeptide bond, Phosphoprotein, Ubl conjugation
Cellular Localization	Nucleus

## Images



ARG44233 anti-MLLT10 / AF10 antibody ICC/IF image

Immunofluorescence: A549 stained with ARG44233 anti-MLLT10 / AF10 antibody at 5 µg/ml dilution.



ARG44233 anti-MLLT10 / AF10 antibody WB image

Western blot: Rat testis stained with ARG44233 anti-MLLT10 / AF10 antibody at 0.5 µg/mL dilution.

ARG44233 anti-MLLT10 / AF10 antibody WB image

Western blot: Mouse testis stained with ARG44233 anti-MLLT10 / AF10 antibody at 0.5 µg/mL dilution.

