

ARG44231 anti-MPPE1 antibody

Package: 50 µg
Store at: -20°C

Summary

Product Description	Rabbit Polyclonal antibody recognizes MPPE1
Tested Reactivity	Ms, Rat
Tested Application	FACS, WB
Host	Rabbit
Clonality	Polyclonal
Isotype	IgG
Target Name	MPPE1
Species	Human
Immunogen	Recombinant protein of Human MPPE1
Conjugation	Un-conjugated
Alternate Names	MPPE1; Metallophosphoesterase 1; PGAP5; Post-GPI Attachment To Proteins Factor 5; Post-GPI Attachment To Proteins 5; Cdc1; Metallo Phosphoesterase; EC 3.1.-.- ; CDC1

Application Instructions

Application table	Application	Dilution
	FACS	1-3 µg/1x10 ⁶ cells
	WB	0.25-0.5 µg/ml

Application Note * The dilutions indicate recommended starting dilutions and the optimal dilutions or concentrations should be determined by the scientist.

Properties

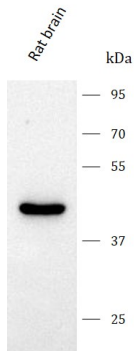
Form	Liquid
Purification	Affinity purification with immunogen.
Buffer	0.9% NaCl, 0.2% Na ₂ HPO ₄ , 0.05% Sodium azide and 5% BSA.
Preservative	0.05% Sodium azide
Stabilizer	5% BSA
Concentration	0.5 mg/ml
Storage instruction	For continuous use, store undiluted antibody at 2-8°C for up to a week. For long-term storage, aliquot and store at -20°C or below. Storage in frost free freezers is not recommended. Avoid repeated freeze/thaw cycles. Suggest spin the vial prior to opening. The antibody solution should be gently mixed before use.
Note	For laboratory research only, not for drug, diagnostic or other use.

Bioinformation

Gene Symbol	MPPE1
Gene Full Name	Metallophosphoesterase 1
Background	Predicted to enable GPI anchor binding activity; GPI-mannose ethanolamine phosphate phosphodiesterase activity; and manganese ion binding activity. Involved in GPI anchor biosynthetic process. Located in Golgi apparatus and nucleoplasm.
Function	Metallophosphoesterase required for transport of GPI-anchor proteins from the endoplasmic reticulum to the Golgi. Acts in lipid remodeling steps of GPI-anchor maturation by mediating the removal of a side-chain ethanolamine-phosphate (EtNP) from the second Man (Man2) of the GPI intermediate, an essential step for efficient transport of GPI-anchor proteins.
Calculated Mw	45 kDa
Cellular Localization	Golgi apparatus, Membrane

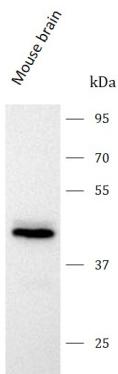
Images

ARG44231 anti-MPPE1 antibody WB image



Western blot: Rat brain stained with ARG44231 anti-MPPE1 antibody at 0.5 $\mu\text{g}/\text{mL}$ dilution.

ARG44231 anti-MPPE1 antibody WB image



Western blot: Mouse brain stained with ARG44231 anti-MPPE1 antibody at 0.5 $\mu\text{g}/\text{mL}$ dilution.