

## ARG44228 anti-MAP1S antibody

Package: 50 µg  
Store at: -20°C

### Summary

|                     |   |
|---------------------|---|
| Product Description | Rabbit Polyclonal antibody recognizes MAP1S   |
| Tested Reactivity   | Hu, Ms, Rat   |
| Tested Application  | FACS, IHC-P, WB   |
| Host                | Rabbit  |
| Clonality           | Polyclonal  |
| Isotype             | IgG   |
| Target Name         | MAP1S   |
| Species             | Human   |
| Immunogen           | Recombinant protein of Human MAP1S  |
| Conjugation         | Un-conjugated   |
| Alternate Names     | MAP1S; Microtubule Associated Protein 1S; MAP8; BPY2IP1; VCY2IP1; Variable Charge Y Chromosome 2-Interacting Protein 1; Microtubule-Associated Protein 1S; Microtubule-Associated Protein 8; BPY2-Interacting Protein 1; VCY2-Interacting Protein 1; FLJ10669; VCY2IP-1; C19orf5; MAP-1S; Chromosome 19 Open Reading Frame 5; VCY2 Interacting Protein 1; BPY2 Interacting Protein 1; C19ORF5 |

### Application Instructions

| Application table | Application | Dilution                       |
|-------------------|-------------|--------------------------------|
|                   | FACS        | 1-3 µg/1x10 <sup>6</sup> cells |
|                   | IHC-P       | 2-5 µg/ml                      |
|                   | WB          | 0.25-0.5 µg/ml                 |

**Application Note** \* The dilutions indicate recommended starting dilutions and the optimal dilutions or concentrations should be determined by the scientist.

### Properties

|                     |   |
|---------------------|---|
| Form                | Liquid  |
| Purification        | Affinity purification with immunogen.   |
| Buffer              | 0.9% NaCl, 0.2% Na <sub>2</sub> HPO <sub>4</sub> , 0.05% Sodium azide and 5% BSA.   |
| Preservative        | 0.05% Sodium azide  |
| Stabilizer          | 5% BSA  |
| Concentration       | 0.5 mg/ml   |
| Storage instruction | For continuous use, store undiluted antibody at 2-8°C for up to a week. For long-term storage, aliquot and store at -20°C or below. Storage in frost free freezers is not recommended. Avoid repeated |

freeze/thaw cycles. Suggest spin the vial prior to opening. The antibody solution should be gently mixed before use.

**Note** For laboratory research only, not for drug, diagnostic or other use.

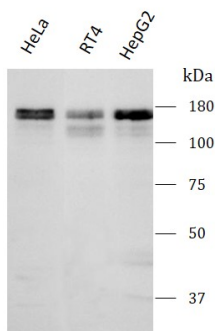
## Bioinformation

|                       |   |
|-----------------------|---|
| Gene Symbol           | MAP1S   |
| Gene Full Name        | Microtubule Associated Protein 1S   |
| Background            | Enables DNA binding activity and cytoskeletal protein binding activity. Involved in microtubule bundle formation; neuron projection morphogenesis; and regulation of chromatin disassembly. Located in several cellular components, including microtubule cytoskeleton; nuclear lumen; and perinuclear region of cytoplasm. |
| Function              | Microtubule-associated protein that mediates aggregation of mitochondria resulting in cell death and genomic destruction (MAGD). Plays a role in anchoring the microtubule organizing center to the centrosomes. Binds to DNA. Plays a role in apoptosis. Involved in the formation of microtubule bundles.                 |
| Calculated Mw         | 112 kDa   |
| PTM                   | Phosphoprotein  |
| Cellular Localization | Cytoplasm, Cytoskeleton, Microtubule, Nucleus   |

## Images

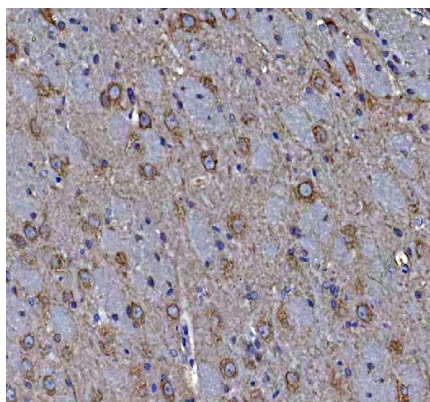
ARG44228 anti-MAP1S antibody WB image

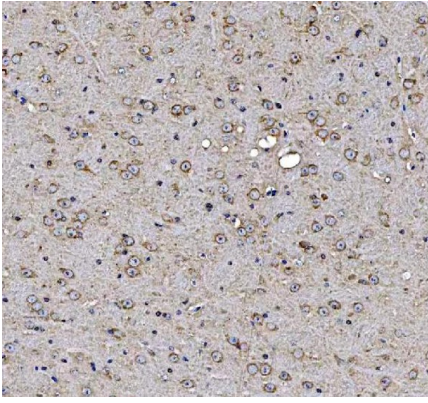
Western blot: HeLa, RT4 and HepG2 stained with ARG44228 anti-MAP1S antibody at 0.5 µg/mL dilution.



ARG44228 anti-MAP1S antibody IHC-P image

Immunohistochemistry: Rat brain stained with ARG44228 anti-MAP1S antibody at 2 µg/ml dilution.





ARG44228 anti-MAP1S antibody IHC-P image

Immunohistochemistry: Mouse brain stained with ARG44228 anti-MAP1S antibody at 2  $\mu$ g/ml dilution.