

ARG44217 anti-POLR2B antibody

Package: 50 µg
Store at: -20°C

Summary

Product Description	Rabbit Polyclonal antibody recognizes POLR2B
Tested Reactivity	Hu, Ms, Rat
Tested Application	FACS, ICC/IF, WB
Host	Rabbit
Clonality	Polyclonal
Isotype	IgG
Target Name	POLR2B
Species	Human
Immunogen	Recombinant protein of Human POLR2B
Conjugation	Un-conjugated
Alternate Names	POLR2B; RNA Polymerase II Subunit B; RPB2; DNA-Directed RNA Polymerase II 140 KDa Polypeptide; DNA-Directed RNA Polymerase II Subunit RPB2; DNA-Directed RNA Polymerase II Subunit B; RNA Polymerase II Subunit B2; RNA Polymerase II Subunit 2; EC 2.7.7.6; Polymerase (RNA) II (DNA Directed) Polypeptide B (140kD); Polymerase (RNA) II (DNA Directed) Polypeptide B, 140kDa; RNA Polymerase II Second Largest Subunit; Polymerase (RNA) II Subunit B; EC 2.7.7; HRPB140; POL2RB

Application Instructions

Application table	Application	Dilution
	FACS	1-3 µg/1x10 ⁶ cells
	ICC/IF	5 µg/ml
	WB	0.25-0.5 µg/ml

Application Note * The dilutions indicate recommended starting dilutions and the optimal dilutions or concentrations should be determined by the scientist.

Properties

Form	Liquid
Purification	Affinity purification with immunogen.
Buffer	0.9% NaCl, 0.2% Na ₂ HPO ₄ , 0.05% Sodium azide and 5% BSA.
Preservative	0.05% Sodium azide
Stabilizer	5% BSA
Concentration	0.5 mg/ml
Storage instruction	For continuous use, store undiluted antibody at 2-8°C for up to a week. For long-term storage, aliquot and store at -20°C or below. Storage in frost free freezers is not recommended. Avoid repeated

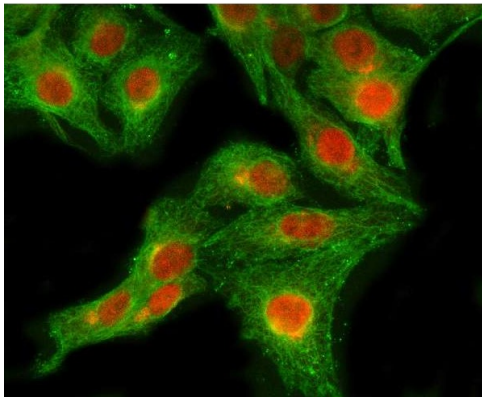
freeze/thaw cycles. Suggest spin the vial prior to opening. The antibody solution should be gently mixed before use.

Note For laboratory research only, not for drug, diagnostic or other use.

Bioinformation

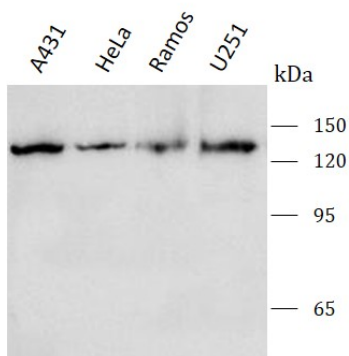
Gene Symbol	POLR2B
Gene Full Name	Rna Polymerase Ii Subunit B
Background	This gene encodes the second largest subunit of RNA polymerase II (Pol II), a DNA-dependent RNA polymerase that catalyzes the transcription of DNA into precursors of mRNA, snRNA and microRNA. This subunit and the largest subunit form opposite sides of the center cleft of Pol II. Deletion of the flap loop region of this subunit results in a decrease in the rate of transcriptional elongation. Alternative splicing results in multiple transcript variants.
Function	DNA-dependent RNA polymerase catalyzes the transcription of DNA into RNA using the four ribonucleoside triphosphates as substrates. Second largest component of RNA polymerase II which synthesizes mRNA precursors and many functional non-coding RNAs. Proposed to contribute to the polymerase catalytic activity and forms the polymerase active center together with the largest subunit. Pol II is the central component of the basal RNA polymerase II transcription machinery. It is composed of mobile elements that move relative to each other. RPB2 is part of the core element with the central large cleft, the clamp element that moves to open and close the cleft and the jaws that are thought to grab the incoming DNA template.
Calculated Mw	134 kDa
PTM	Methylation, Phosphoprotein
Cellular Localization	DNA-directed RNA polymerase, Nucleus

Images



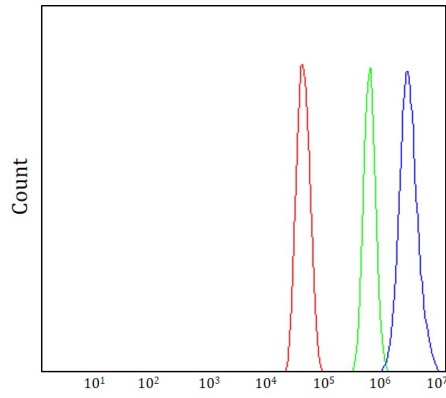
ARG44217 anti-POLR2B antibody ICC/IF image

Immunofluorescence: A549 stained with ARG44217 anti-POLR2B antibody at 5 µg/mL dilution.



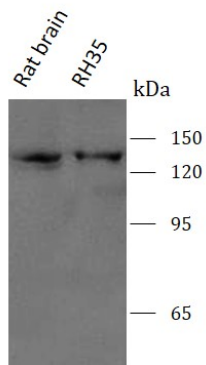
ARG44217 anti-POLR2B antibody WB image

Western blot: A431, HeLa, Ramos and U251 stained with ARG44217 anti-POLR2B antibody at 0.5 µg/mL dilution.



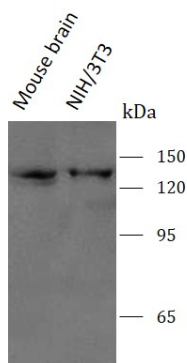
ARG44217 anti-POLR2B antibody FACS image

Flow Cytometry: U251 stained with ARG44217 anti-POLR2B antibody at 1 µg/1x10⁶ cells dilution.



ARG44217 anti-POLR2B antibody WB image

Western blot: Rat brain and RH35 stained with ARG44217 anti-POLR2B antibody at 0.5 µg/mL dilution.



ARG44217 anti-POLR2B antibody WB image

Western blot: Mouse brain and NIH/3T3 stained with ARG44217 anti-POLR2B antibody at 0.5 µg/mL dilution.