

ARG44203 anti-MMACHC / CblC antibody

Package: 50 µg
Store at: -20°C

Summary

Product Description	Rabbit Polyclonal antibody recognizes MMACHC / CblC
Tested Reactivity	Hu
Tested Application	FACS, WB
Host	Rabbit
Clonality	Polyclonal
Isotype	IgG
Target Name	MMACHC / CblC
Species	Human
Immunogen	Recombinant protein of Human MMACHC / CblC
Conjugation	Un-conjugated
Alternate Names	MMACHC; Metabolism Of Cobalamin Associated C; CblC; Methylmalonic Aciduria (Cobalamin Deficiency) CblC Type, With Homocystinuria; Methylmalonic Aciduria And Homocystinuria Type C Protein; Cyanocobalamin Reductase / Alkylcobalamin Dealkylase; Cyanocobalamin Reductase (Cyanide-Eliminating); Alkylcobalamin:Glutathione S-Alkyltransferase; DKFZP564I122; EC 2.5.1.151; EC 1.16.1.6

Application Instructions

Application table	Application	Dilution
	FACS	1-3 µg/1x10 ⁶ cells
	WB	0.25-0.5 µg/ml
Application Note	* The dilutions indicate recommended starting dilutions and the optimal dilutions or concentrations should be determined by the scientist.	

Properties

Form	Liquid
Purification	Affinity purification with immunogen.
Buffer	0.9% NaCl, 0.2% Na ₂ HPO ₄ , 0.05% Sodium azide and 5% BSA.
Preservative	0.05% Sodium azide
Stabilizer	5% BSA
Concentration	0.5 mg/ml
Storage instruction	For continuous use, store undiluted antibody at 2-8°C for up to a week. For long-term storage, aliquot and store at -20°C or below. Storage in frost free freezers is not recommended. Avoid repeated freeze/thaw cycles. Suggest spin the vial prior to opening. The antibody solution should be gently mixed before use.

Note

For laboratory research only, not for drug, diagnostic or other use.

Bioinformation

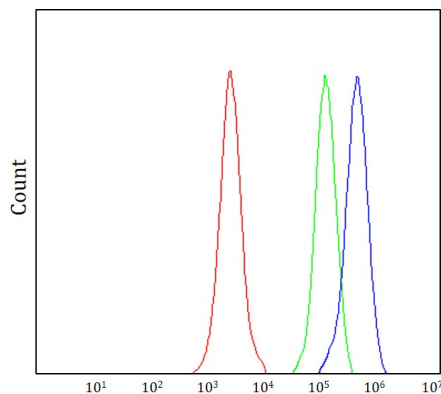
Gene Symbol	MMACHC
Gene Full Name	Metabolism Of Cobalamin Associated C
Background	The exact function of the protein encoded by this gene is not known, however, its C-terminal region shows similarity to TonB, a bacterial protein involved in energy transduction for cobalamin (vitamin B12) uptake. Hence, it is postulated that this protein may have a role in the binding and intracellular trafficking of cobalamin. Mutations in this gene are associated with methylmalonic aciduria and homocystinuria type cb1C.
Function	Cobalamin (vitamin B12) cytosolic chaperone that catalyzes the reductive decyanation of cyanocob(III)alamin (cyanocobalamin, CNCbl) to yield cob(II)alamin and cyanide, using FAD or FMN as cofactors and NADPH as cosubstrate.
Calculated Mw	32 kDa
PTM	Phosphoprotein
Cellular Localization	Cytoplasm

Images

ARG44203 anti-MMACHC / CblC antibody WB image



Western blot: K562 stained with ARG44203 anti-MMACHC / CblC antibody at 0.5 $\mu\text{g}/\text{mL}$ dilution.



ARG44203 anti-MMACHC / CblC antibody FACS image

Flow Cytometry: JK stained with ARG44203 anti-MMACHC / CblC antibody at $1 \mu\text{g}/1 \times 10^6$ cells dilution.