

## ARG44201 anti-HB EGF antibody

Package: 50 µg  
Store at: -20°C

### Summary

Product Description	Rabbit Polyclonal antibody recognizes HB EGF
Tested Reactivity	Ms, Rat
Tested Application	WB
Host	Rabbit
Clonality	Polyclonal
Isotype	IgG
Target Name	HB EGF
Species	Mouse
Immunogen	Recombinant protein of Mouse HB EGF
Conjugation	Un-conjugated
Alternate Names	HBEGF; Heparin Binding EGF Like Growth Factor; HEGFL; DTR; DTS; Diphtheria Toxin Receptor (Heparin-Binding Epidermal Growth Factor-Like Growth Factor); Diphtheria Toxin Receptor (Heparin-Binding EGF-Like Growth Factor); Proheparin-Binding EGF-Like Growth Factor; Heparin-Binding Epidermal Growth Factor; Heparin-Binding EGF-Like Growth Factor; DTSF

### Application Instructions

Application table	Application	Dilution
	WB	0.25-0.5 µg/ml
Application Note	* The dilutions indicate recommended starting dilutions and the optimal dilutions or concentrations should be determined by the scientist.	

### Properties

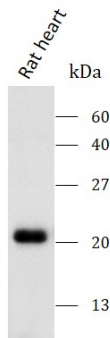
Form	Liquid
Purification	Affinity purification with immunogen.
Buffer	0.9% NaCl, 0.2% Na <sub>2</sub> HPO <sub>4</sub> , 0.05% Sodium azide and 5% BSA.
Preservative	0.05% Sodium azide
Stabilizer	5% BSA
Concentration	0.5 mg/ml
Storage instruction	For continuous use, store undiluted antibody at 2-8°C for up to a week. For long-term storage, aliquot and store at -20°C or below. Storage in frost free freezers is not recommended. Avoid repeated freeze/thaw cycles. Suggest spin the vial prior to opening. The antibody solution should be gently mixed before use.
Note	For laboratory research only, not for drug, diagnostic or other use.

## Bioinformation

Gene Symbol	HBEGF
Gene Full Name	Heparin-Binding EGF-Like Growth Factor
Background	Enables growth factor activity and heparin binding activity. Involved in several processes, including epidermal growth factor receptor signaling pathway; positive regulation of protein kinase B signaling; and positive regulation of wound healing. Located in cell surface and extracellular space. Implicated in glomerulosclerosis and perinatal necrotizing enterocolitis.
Function	Growth factor that mediates its effects via EGFR, ERBB2 and ERBB4. Required for normal cardiac valve formation and normal heart function. Promotes smooth muscle cell proliferation. May be involved in macrophage-mediated cellular proliferation. It is mitogenic for fibroblasts, but not endothelial cells. It is able to bind EGF receptor/EGFR with higher affinity than EGF itself and is a far more potent mitogen for smooth muscle cells than EGF. Also acts as a diphtheria toxin receptor.
Calculated Mw	23 kDa
PTM	Disulfide bond, Glycoprotein
Cellular Localization	Cell membrane, Membrane, Secreted

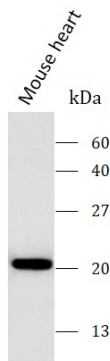
## Images

ARG44201 anti-HB EGF antibody WB image



Western blot: Rat heart stained with ARG44201 anti-HB EGF antibody at 0.5  $\mu\text{g}/\text{mL}$  dilution.

ARG44201 anti-HB EGF antibody WB image



Western blot: Mouse heart stained with ARG44201 anti-HB EGF antibody at 0.5  $\mu\text{g}/\text{mL}$  dilution.